



*Woodworking machinery at its best!*

**SCROLL SAW WITH FOOT SWITCH  
OWNERS MANUAL  
MODEL: SS18F**



**Charnwood Machinery Ltd, Cedar Court, Walker Road,  
Bardon Hill, Leicestershire, LE67 1TU  
Tel. 01530 516 926 Fax. 01530 516 929  
email: [sales@charnwood.net](mailto:sales@charnwood.net) website: [www.charnwood.net](http://www.charnwood.net)**

# GENERAL SAFETY RULES



**WARNING:** Do not attempt to operate the machine until you have read thoroughly and understood completely all instructions, rules, etc. contained in this manual. Failure to comply may result in accidents involving fire, electric shock, or serious personal injury. Keep this owner's manual and review frequently for continuous safe operation.

1. Know your machine. For your own safety, read the owner's manual carefully. Learn its application and limitations, as well as specific potential hazards pertinent to this machine.
2. Make sure all tools are properly earthed.
3. Keep guards in place and in working order. If a guard must be removed for maintenance or cleaning, make sure it is properly replaced before using the machine again.
4. Remove adjusting keys and spanners. Form a habit of checking to see that the keys and adjusting spanners are removed from the machine before switched it on.
5. Keep your work area clean. Cluttered areas and workbenches increase the chance of an accident.
6. Do not use in dangerous environments. Do not use power tools in damp or wet locations, or expose them to rain. Keep work areas well illuminated.
7. Keep children away. All visitors should be kept a safe distance
8. from the work area.
9. Make workshop childproof. Use padlocks, master switches and remove starter keys.
10. Do not force the machine. It will do the job better and be safer at the rate for which it is designed.
11. Use the right tools. Do not force the machine or attachments to do a job for which they are not designed. Contact the manufacturer or distributor if there is any question about the machine's suitability for a particular task.
12. Wear proper apparel. Avoid loose clothing, gloves, ties, rings, bracelets, and jewellery which could get caught in moving parts. Non-slip footwear is recommended. Wear protective hair covering to contain long hair.
13. Always use safety glasses. Normal spectacles only have impact resistant lenses. They are not safety glasses.
14. Do not over-reach. Keep proper footing and balance at all times.
15. Maintain the machine in good condition. Keep the machine clean for best and safest performance. Follow instructions for lubrication and changing accessories.
16. Disconnect the machine from power source before servicing and when changing the blade.
17. Never leave the machine running unattended. Turn the power off. Do not leave the machine until it comes to a complete stop.
18. Do not use any power tools while under the effects of drugs, alcohol or medication.
19. Always wear a face or dust mask if operation creates a lot of dust and/or chips. Always operate the tool in a well ventilated area and provide for proper dust removal. Use a suitable dust extractor.



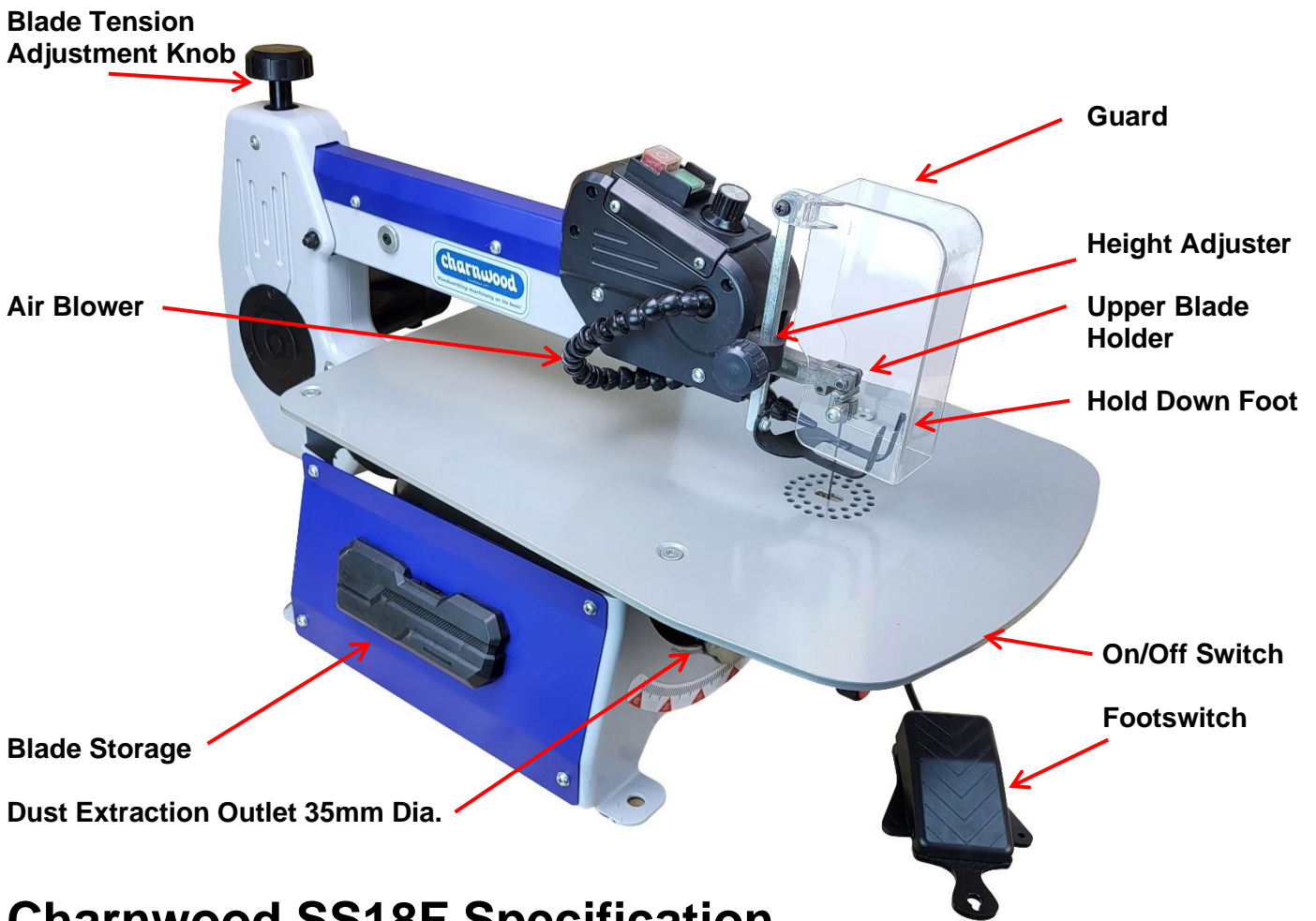
**Risk of Injury: Never Reach Into A moving Part**

**Always Wear Eye Protection**

**Always Wear A Dust Mask**

**Always Wear Ear Protection**

# Overview of Scroll Saw



## Charnwood SS18F Specification

Motor (DC) 240v, 50hz	120w
Blade Speed	550 – 1550 strokes per minute
Blade Length – Pin Type	127mm
Blade Length – Pinless Type	130mm
Table Size	541 x 349mm
Max. Cutting Depth (90 / 45 degrees)	50mm / 20mm
Throat Depth	457mm (18")
Table Tilt (Left & Right)	45 left to 45 degrees right
Dust Outlet	35mm Diameter
Weight	24kg
Manufacturer's Warranty	5 year
Rating	Hobby

## Rating Description

**Hobby:** Suitable for Weekend DIY'ers and woodworking enthusiasts.

Generally lighter weight machines with lower power ratings and smaller tooling capacities. Typically only ever used by one person for short periods of time or longer periods of time infrequently. Machinery should be well maintained in a clean, dry environment such as a home workshop, garage or timber shed.

**Expected maximum use of 100 hours annually.**

**Please Note:** Using a product in excess of its rating will void the manufacturer's free warranty.

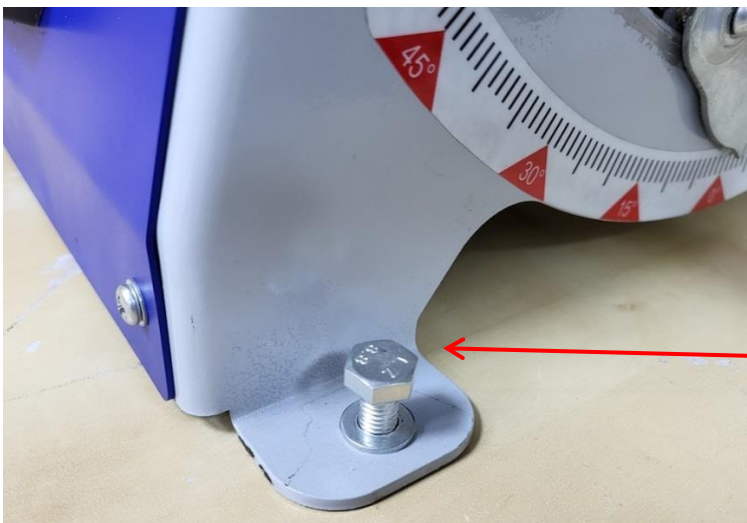
# Unpacking



All items are contained in one cardboard carton.

Carefully unpack and check that all items are included as in the cover image.

# Setting Up the Scroll Saw



It is normal for scroll saws to create a lot of vibration.

Fixing the saw down to a heavy duty work bench is recommended.

Some people also find using a vibration absorbing mat helps.

There are four bench mounting points provided.



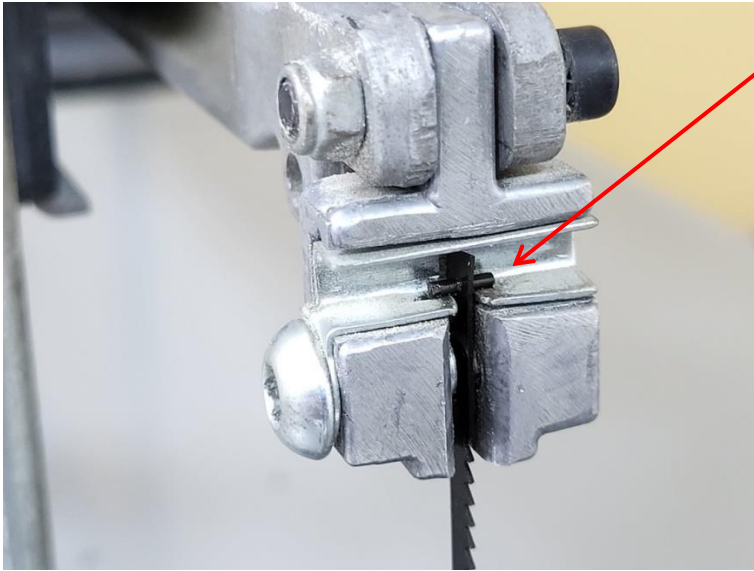
There are two types of blade that can be used with this scroll saw.

When fitting a blade, always ensure the teeth of the blade are pointing down and facing towards the direction of feed.

Plain End Type Blade

Pin End Type Blade





## USING PIN END BLADES

The pin type blade simply hooks over the upper and lower blade holder.

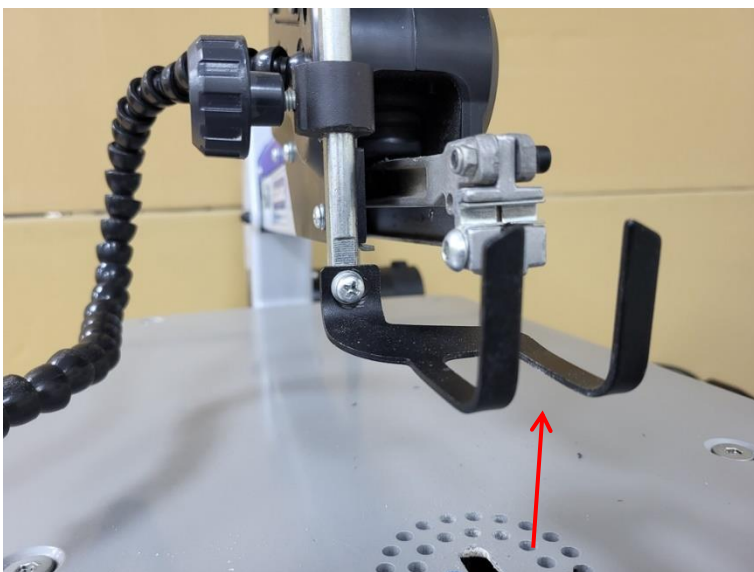
Make sure the pins sit in the indentation.

Pin type blades are quick and easy to change, but are not available in very narrow widths for making the most intricate cuts.

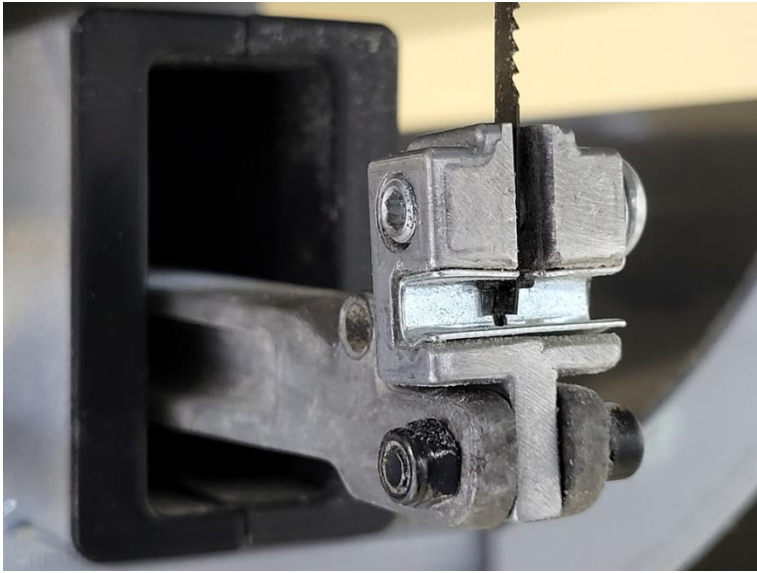


To Fit the blade:

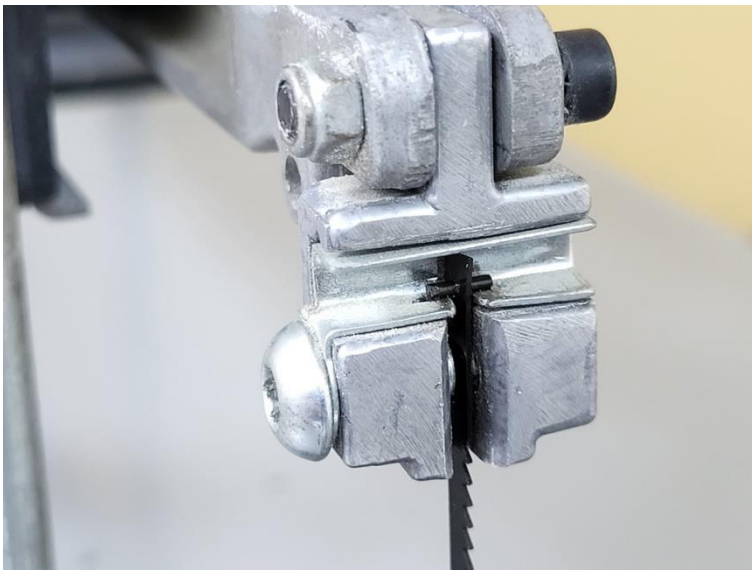
Take the tension off the blade, by turning the blade tension knob anti clockwise.



Adjust the hold down foot so it is at least 50mm above the main table.



Hook the lower pin over the lower blade holder.



Press down lightly on the upper blade holder and hook the upper pin over the upper blade holder.

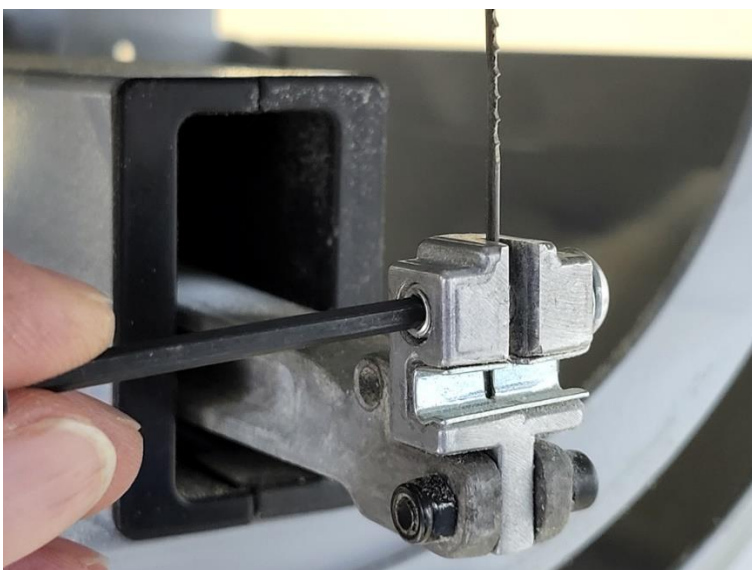
To remove the blade, follow these instructions in reverse.

Tension the blade using the tension knob.

If the tension setting is not correct, it can be adjusted as follows:

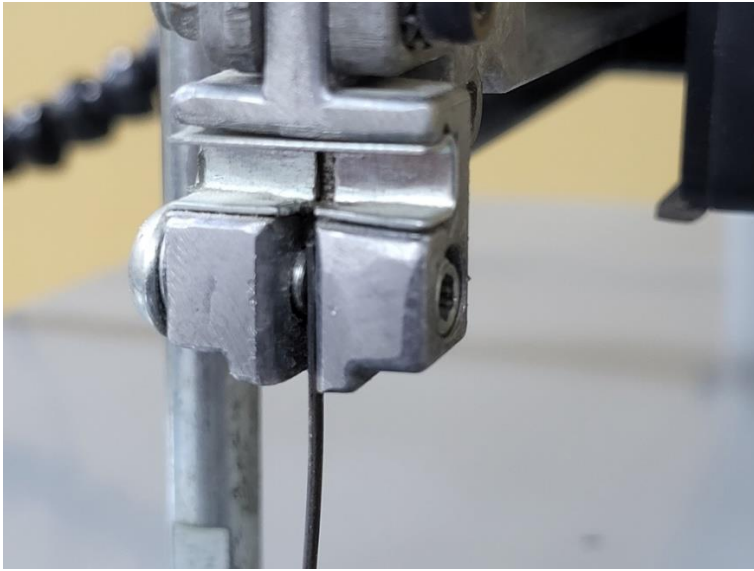
To increase tension to the blade, rotate the tension knob clockwise.

To decrease tension, turn the knob anticlockwise.



### **USING PLAIN END BLADES**

To use plain end blades use a 4mm Hex key to loosen the left hand grub screw on the lower clamp then slot a new blade in and tighten the grub screw.



Undo the screw on the right hand side of the upper clamp, slot the top of the blade in and tighten the screw.

Follow the blade tensioning instructions as for Pin End blades.

## Using the Scroll Saw

**A suitable dust extractor should always be used.**



There are two ways to control the scroll saw:  
The control panel or The foot switch

**To use the control panel:**  
Set the black rocker switch to position labelled 'I'



Press the green 'On' button labelled 'I'

Set the desired speed by turning the speed dial.

Clockwise to increase the speed and anti-clockwise to decrease the speed.





**To use the foot switch:**

Set the black rocker switch to position labelled 'II'

Press the green 'On' button labelled 'I'

NOTE: The saw will not start until you press the pedal.



Turn the speed dial clockwise to high speed marked 'H'



To start the saw, press down on the foot switch.

The foot switch controls the speed, the more you press down the foot switch the faster the speed of the blade.

Using the foot switch allows both hands to be used to guide the work piece and the convenience of stopping and starting without taking your hands off.



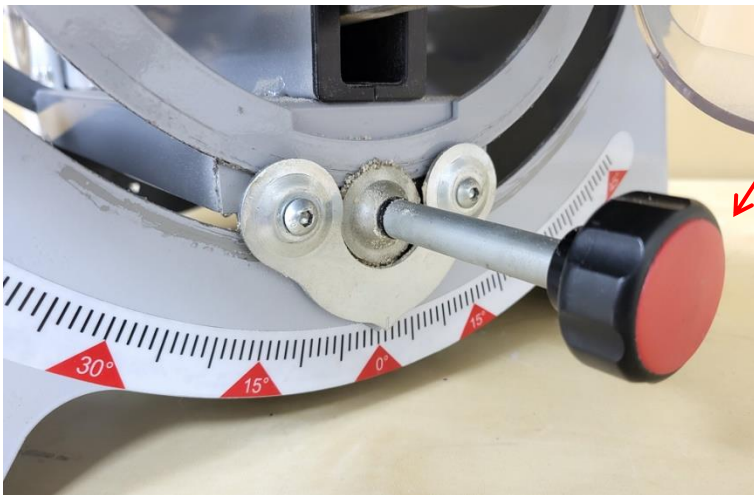


### Regular Cutting

Lower the hold down foot so that it is just above the height of the wood to be cut. It prevents the work piece lifting off the table during the upstroke of the blade.

Adjust the air blower so that it is pointing down at the cutting area. This enables a clearer view of the cut, particularly useful when following pencil lines.

Lower the Perspex guard.



### Bevel Cutting

The Yoke can be tilted 45 degrees to the left or right. To adjust the angle of cut slacken off the locking knob.



Tilt the Yoke to the desired angle and tighten the locking knob.

Lower the perspex guard.

# Troubleshooting

Problem	Cause	Remedy
Machine does not start	Blown Fuse	Replace Fuse
	Loose switch terminal	Inspect back of switch
	Damaged / worn brushes	Replace motor brushes
	Faulty switch	Replace switch
Only starts when Green button is held down	Faulty switch	Replace switch
Blade snaps	Too much tension on blade	Replace blade
Rough cut	Blade is blunt	Replace Blade
Burnt edges on cut	Blade is blunt	Replace Blade

## Declaration of Conformity for CE Marking

Charnwood Declare that Scroll Saw, Model SS18F

Conforms with the following Directives: Machinery Directive 2006/42/EC

Conforms with the following UK Regulations: Supply of Machinery (Safety) Regulations 2008

And further conforms to the machinery example for which the EC type examination Certificate No. MD SHES2306011052 and SHEM230600352101PTC have been issued by SGS-CSTC Technical Services Co. Ltd.

I hereby declare that equipment named above has been tested and found to comply with the relevant sections of the above referenced specifications. The machinery complies with all essential requirements of the directive.

Signed: 

Dated: 01/03/2024

Location: Leicestershire

Richard Cook, Director



Please dispose of packaging for the product in a responsible manner. It is suitable for recycling. Help to protect the environment, take the packaging to the local amenity tip and place into the appropriate recycling bin.



Only for EU countries

Do not dispose of electric tools together with household waste material!  
In observance of European Directive 2002/96/EC on waste electrical and electronic equipment (EEE) and its implementation in accordance with national law, electric tools that have reached the end of their life must be collected separately and returned to an

environmentally compatible recycling facility.

Your local refuse amenity will have a separate collection area for EEE goods

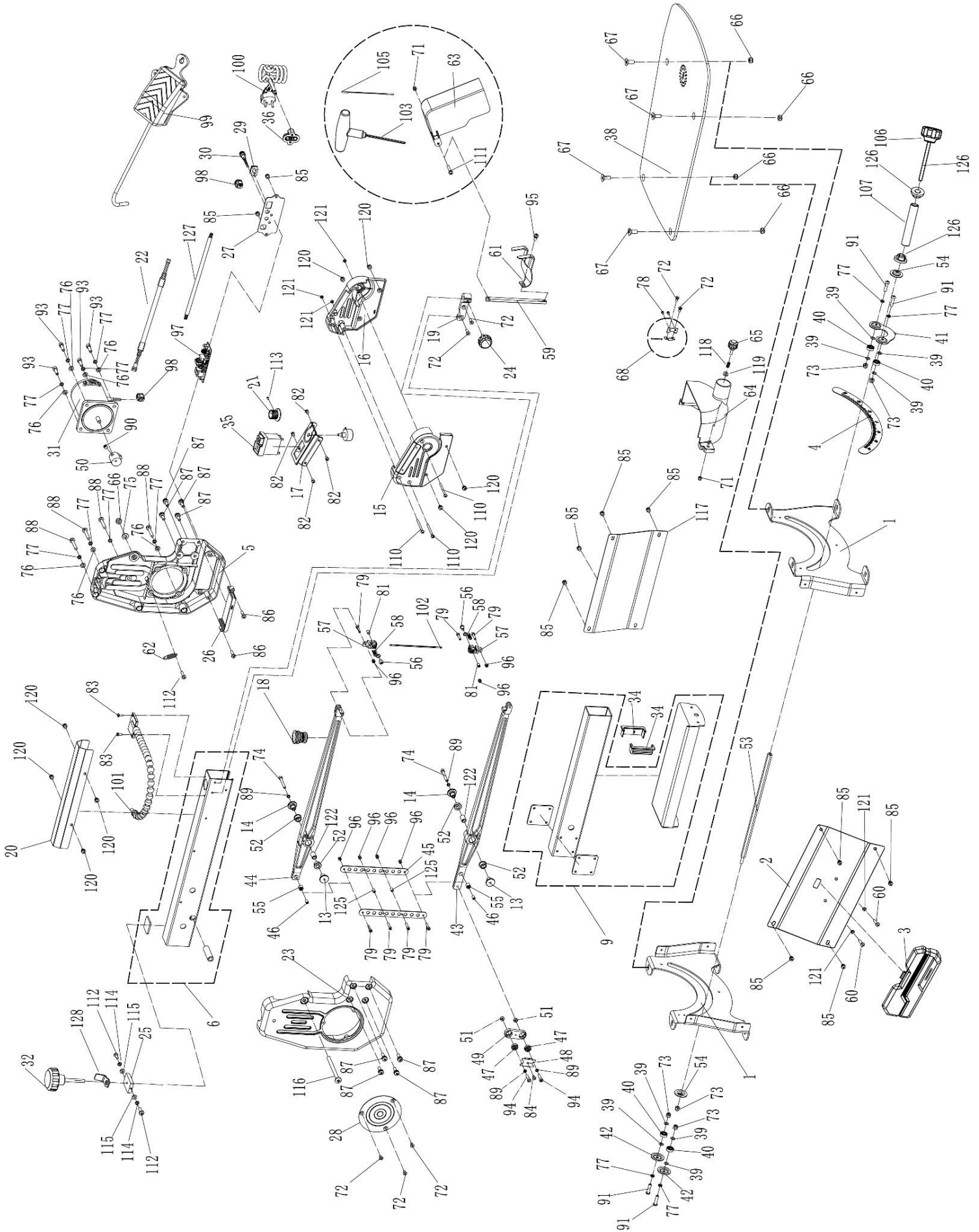
# Charnwood SS18F Parts List

No	Name	QTY
1	Panel	2
2	Left side plate	1
3	Tool box	1
4	Steering ruler sticker	1
5	Right support	1
6	Upper bracket	1
9	Lower bracket	1
13	Thread bushing	2
14	Axle sleeve	2
15	Left switch box	1
16	Right switch box	1
17	Switch panel	1
18	Gasbag	1
19	Press foot support block	1
20	Upper arm guard plate	1
21	Indicating knob	1
22	Potentiometer connection	1
23	Left support	1
24	Compression lever handle	1
25	Tensioner block	1
26	Circuit board box	1
27	Right support cover	1
28	Left support cover	1
29	Switch	1
30	Power light	1
31	Motor	1
32	Tightening handle	1
34	Bracket tube blocked	2
35	Electromagnetic switch	1
36	Cable clamp	1
38	Worktable	1
39	Bearing gasket	8
40	Deep groove ball bearing	4
41	Bearing pointer bowl	1
42	Bearing pressure bowl	2
43	Lower rocker bar	1
44	Upper rocker bar	1
45	Tension plate	2
46	Bearing bush	4
47	Deep groove ball bearing	2
48	Connecting block press plate	1
49	Eccentric connection block	1
50	Eccentric wheel	1
51	Small cushion cover	2
52	Oil bearing	4
53	Tension lever	1
54	Locking bowl	2
55	Drawn cup needle roller bearing	2
56	Screw	2
57	Saw blade clip	2
58	Gasket	2
59	Compressor lever	1
60	Screw M4 x 8mm	2
61	Fender bracket	1
62	Tension spring	1
63	Saw blade guard	1

No	Name	QTY
64	Lower shield	1
65	Index dial handle	1
66	Hexagon lock nut	5
67	Hexagon socket screw M8 x 18mm	4
68	Hinge	1
71	Hexagon lock nut M5	2
72	Phillips screw M5 x 10mm	7
73	Hexagon lock nut M6	5
74	Hexagon socket screw mM5 x 40mm	2
75	Flat washer 8	1
76	Flat washer 6	8
77	Spring washer 6	12
78	Phillips screw	2
79	Hexagon socket screw M4 x 20mm	6
81	Bolt	2
82	Phillips screw	4
83	Phillips screw M4 x 10mm	3
84	Phillips screw	1
85	Phillips screw+spring washer+flat washer	14
86	Phillips screw M5 x 20mm	2
87	Phillips screw+spring washer+flat washer	8
88	Phillips screw M6 x 35mm	4
89	Spring washer	4
90	Hexagon socket screw M8 x 8mm	1
91	Hexagon socket screw M6 x 25mm	4
93	Hexagon socket screw M6 x 20mm	4
94	Hexagon socket screw M5 x 20mm	2
95	Phillips screw+spring washer+flat washer	1
96	Hexagon lock nut M4	8
97	Circuit board	1
98	Wire clip	2
99	Foot switch	1
100	Power cord	1
101	Blowpipe	1
102	Wide saw blade - with pin	1
103	T wrench	1
105	Narrow saw blade - without pin	1
106	Index plate locking handle	1
107	Spacer bush	1
110	Phillips screw M4 x 50mm	4
111	Phillips screw+spring washer assy	1
112	Hexagon socket screw M4 x 10mm	3
113	Hexagon socket screw M4 x 8mm	1
114	Spring washer	2
115	Flat washer	2
116	Phillips screw M8 x 65mm	1
117	Right-side plate	1
118	Compression spring	1
119	Flat washer	1
120	Phillips screw+flat washer M5 x 8mm	4
121	Hexagon nut	5
122	Spacer sleeve	2
125	Plastic gasket	2
126	Spacer pad	2
127	Cable	1
128	wire barrier	1



# Charnwood SS18F Parts Drawing



Updated March 2024