

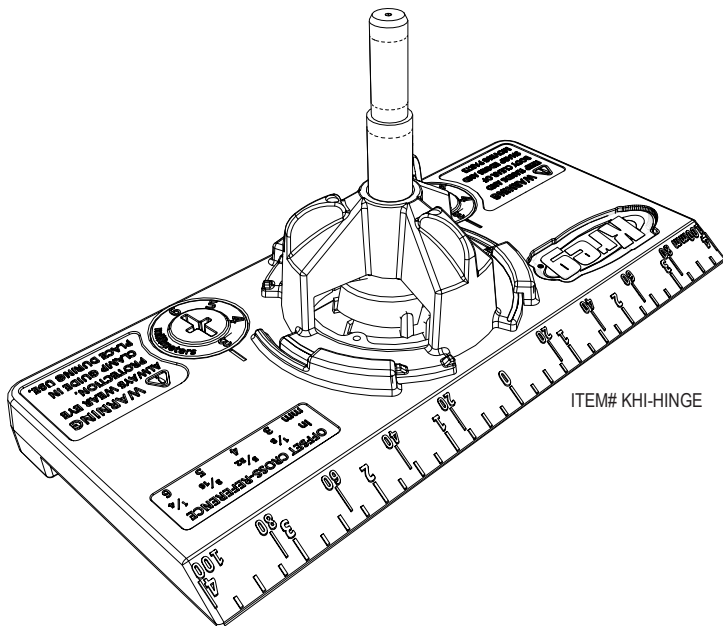


Concealed Hinge Jig

Owner's Manual

Guide d'utilisation

Manual del propietario



ITEM# KHI-HINGE

Follow your drill manufacturer's instructions and safety guidelines.

Always wear eye protection.

The drill bit is sharp. Keep the cap on the bit until you are ready to drill. Wear gloves when handling an unprotected bit.

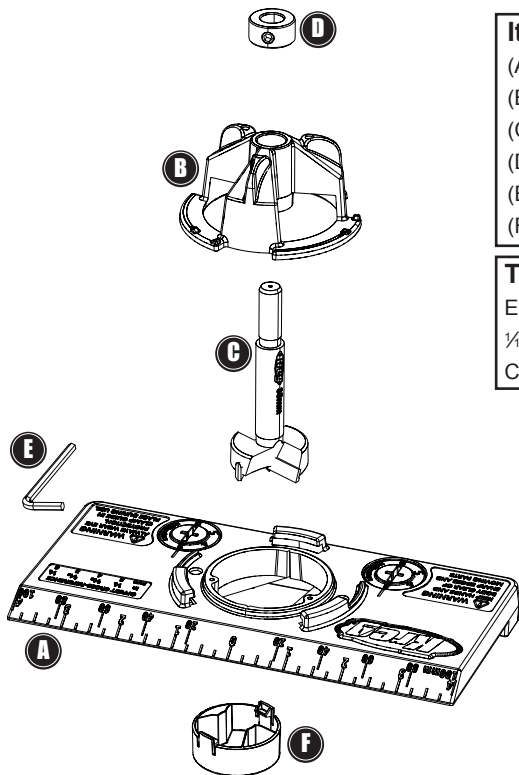
Use two clamps to secure the jig to the workpiece. Do not attempt to hold it in place by hand.

Keep your body and hands away from sharp bit edges and moving parts.

Keeps hands and fingers away from the back face of the workpiece when drilling.

⚠ WARNING: This product can expose you to chemicals including Acrylonitrile and other chemicals, which are known to the State of California to cause cancer and reproductive harm. For more information go to www.P65Warnings.ca.gov.

Parts



Items Included:

- (A) Base
- (B) Drill Guide
- (C) 35mm Concealed Hinge Bit
- (D) Stop Collar
- (E) Hex Wrench
- (F) Cap

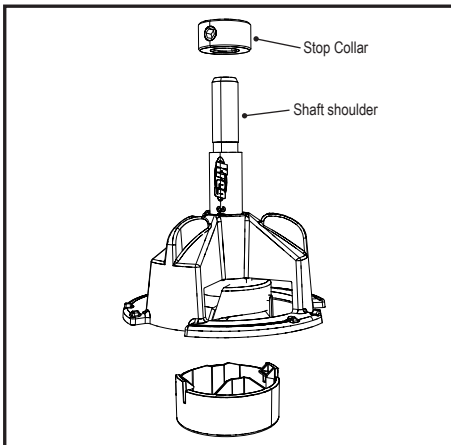
Tools Required:

- Electric drill
- 1/16" [1.5mm] drill bit
- Clamps

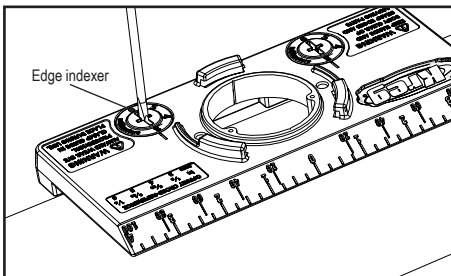
Turn the Drill Guide counterclockwise and remove it from the Base. Insert the 35mm Concealed Hinge Bit into the Drill Guide and slide the Stop Collar onto the bit shaft until it is seated on the shaft shoulder. Tighten the set screw with the Hex Wrench. Set the Drill Guide/35mm Bit aside.

⚠ WARNING The drill bit is sharp. Keep the cap on the bit until you are ready to drill. Wear gloves when handling an unprotected bit.

⚠ ATTENTION The drill bit included with this jig is a custom length with a shoulder for accurately positioning the Stop Collar. Use only a Kreg 35mm Concealed Hinge Bit as a replacement.



Consult your hinge manufacturer's instructions for the distance from the edge of the door to the edge of the 35mm hinge-cup hole. Using a flat-blade screwdriver, turn the Edge Indexers so the appropriate dimension aligns with the line on the Base. The edge-of-door to edge-of-hole dimension usually is given in millimeters. For a dimension given as a fraction of an inch, see the cross-reference table.



Dimension given as fraction of an inch	Set Edge Indexers to millimeter dimension
1/8"	3mm
5/32"	4mm
3/16"	5mm
1/4"	6mm

When manufacturer's instructions specify the distance from the edge of the door to the center of the hinge-cup hole, see the table directional for the correct Edge Indexer setting.

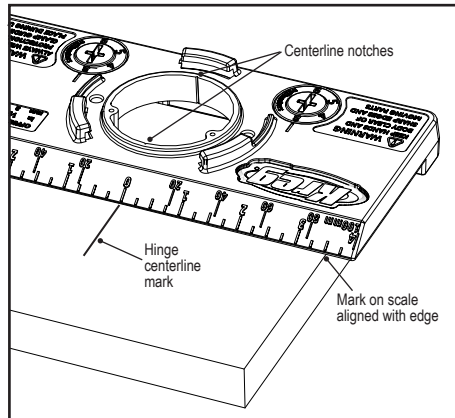
ATTENTION If installation instructions supplied with your hinges are vague, incomplete, or nonexistent, please contact the manufacturer or hardware supplier for complete installation information. Major hardware manufacturers have this information on their Web sites.

Distance from door edge to hole center	Edge Indexer setting
21mm	3mm
22mm	4mm
23mm	5mm
24mm	6mm

Using the Jig

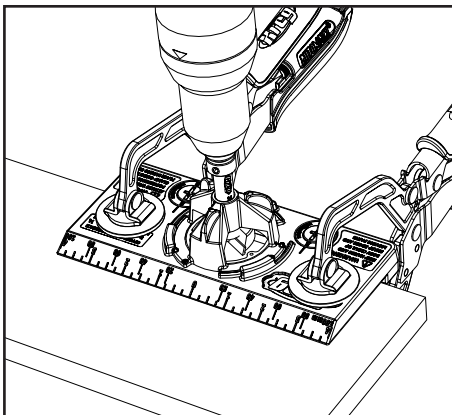
Position the Base with the Edge Indexer cams on the bottom of the Base against the hinge edge of the door. Set the distance from the top or bottom edge of the door by using the scale on the beveled edge of the Base (3½" mark aligned with edge shown) or by aligning a marked centerline with "0" on the scale. Clamp the Base to the door with two clamps, one above and one below the Drill Guide socket.

ATTENTION To keep both Edge Indexer cams in contact with the door, the distance from the top or bottom end of the door to the center of the hinge-cup hole must be at least 2" [51mm].



Chuck the Drill Bit into an electric drill, remove the cap from the drill bit, and install the Drill Guide/Drill Bit in the Base, turning the Drill Guide clockwise until it engages the detents. Switch on the drill, wait until it comes up to full speed, and drill the hole. Stop when the Stop Collar contacts the Drill Guide. With the drill still running, withdraw the bit and turn off the drill. Remove the Drill Guide/Drill Bit from the Base.

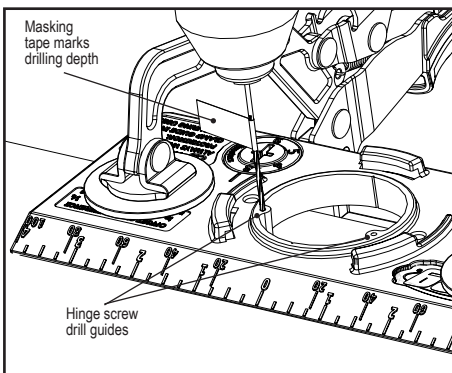
⚠ ATTENTION Always use two clamps to secure the jig.



Chuck a $\frac{1}{16}$ " [1.5mm] drill bit into the electric drill. Insert the bit into the hinge-screw drill guides on the Base and drill pilot holes into the door. Unclamp the Base and move it to the next hinge location.

⚠ ATTENTION Most hinge screws require a $\frac{1}{16}$ " [1.5mm] pilot hole. Check the pilot-hole size for your hinge screws before drilling.

⚠ ATTENTION To avoid accidentally drilling through the door when drilling the hinge-screw pilot holes, wrap a piece of masking tape around the drill bit $\frac{1}{8}$ " [22mm] from the tip ($\frac{1}{2}$ " [13mm] for the Base thickness plus $\frac{3}{8}$ " [10mm] for the depth of the pilot hole).



Follow your hinge manufacturer's instructions for positioning the hinge-mounting plates in the cabinet.