

Operating Instructions

Special Vacuum Cleaner

flexCAT 120 VCA



flexCAT 120 VCA

FLEXCAT 120 VCA

Imprint

Product identification

Special Vacuum Cleaner	Item number
flexCAT 120 VCA	7003130

Manufacturer

Stuermer Maschinen GmbH
 Dr.-Robert-Pfleger-Str. 26
 D-96103 Hallstadt

Fax: 0049 (0) 951 96555 - 55
 E-Mail: info@cleancraft.de
 Internet: www.cleancraft.de

Indications regarding the operating instructions

Original instructions

Edition: 08.01.2021
 Version: 1.03
 Language: English

Author: ES

Indications regarding the copyright

Copyright © 2019 Stuermer Maschinen GmbH,
 Hallstadt, Germany.

The contents of these operating instructions are the sole property of the company Stuermer.

Passing on as well as copying of this document, the use and distribution of its content are prohibited if not explicitly permitted. Contraventions are liable to compensation.

Subject to technical modifications and error.

Content

1 Introduction	3
1.1 Copyright	3
1.2 Customer service	3
1.3 Limitation of liability	3
2 Safety	3
2.1 Symbol explanation	3
2.2 Obligations of the operating company	4
2.3 Requirements to staff	5
2.4 Personal protective equipment	5
2.5 General safety regulations	5
2.6 Safety labels on the vacuum cleaner	6
3 Intended use	7
3.1 Unintended use	7
3.2 Residual risks	7
4 Technical Data	7
4.1 Table	7
4.2 Type plate	7
5 Transport, packaging, storage	8
5.1 Transport	8
5.2 Packaging	8
5.3 Storage	8
6 Description of the device	8
6.1 Filter system	8
6.2 Scope of delivery	9
7 Before first use	9
8 Operation	9
8.1 Start and stopping	10
8.2 Emptying the tank	10
8.3 Controlling of the seal	10
9 Care, maintenance and repair	10
9.1 Care by cleaning	10
9.2 Cleaning of the filter	11
9.3 Maintenance and repair	11
10 Disposal, recycling of used devices	11
10.1 Decommissioning	11
10.2 Waste disposal of electric equipment	11
10.3 Disposal of lubricants	11
10.4 Disposal of the filter	11
11 Malfunctions, their potential causes and remedies	12
12 Spare parts	12
12.1 Ordering spare parts	12
12.2 Spare parts drawing	13
13 EC-Declaration of Conformity	14
14 Notes	15

1 Introduction

You have made a good choice by purchasing the CLEANCRAFT vacuum cleaner

Read the operating manual thoroughly before commissioning the machine.

It gives you information about the proper commissioning, intended use and safe and efficient operation and maintenance of your vacuum cleaner.

The operating manual is part of the vacuum cleaner package. Always keep this operating manual in the location where your vacuum cleaner is being operated. All local accident prevention regulations and general safety instructions for the operating range of your vacuum cleaner must also be complied with.

1.1 Copyright

The contents of these instructions are copyright. They may be used in conjunction with the operation of the vacuum cleaner. Any application beyond those described is not permitted without the written approval of Stürmer GmbH.

For the protection of our products, we shall register trademark, patent and design rights, as this is possible in individual cases. We strongly oppose any infringement of our intellectual property.

1.2 Customer service

Please contact your dealer if you have questions concerning your vacuum cleaner or if you need technical advice. They will help you with specialist information and expert advice.

Germany:

Stürmer Maschinen GmbH
Dr.-Robert-Pfleger-Str. 26
D-96103 Hallstadt

Repair service:

Fax: 0049 (0) 951 96555-111
Email: service@stuermer-maschinen.de

Spare part orders:

Fax: 0049 (0) 951 96555-119
Email: ersatzteile@stuermer-maschinen.de

We are always interested in valuable experience and knowledge gained from using the application-which then could be shared and be valuable to develop our products even further.

1.3 Limitation of liability

All information and notes in these operating instructions were summarised while taking applicable standards and rules, the state-of-the-art technology and our long-term knowledge and experiences into consideration.

In the following cases the manufacturer is not liable for damages:

- Non-observance of the operating instructions,
- Inappropriate use
- Use of untrained staff,
- Unauthorised modifications
- Technical changes,
- Use of not allowed spare parts.

The actual scope of delivery may deviate from the explanations and presentations described here in case of special models, when using additional ordering options or due to latest technical modifications.

The obligations agreed in the delivery contract, the general terms and conditions as well as the delivery conditions of the manufacturer and the legal regulations at the time of the conclusion of the contract are applicable.

2 Safety

This section provides an overview of all important safety packages for the protection of operating personnel as well as for safe and fault-free operation. Other task-based safety notes are included in the paragraphs of the individual phases of life.

2.1 Symbol explanation

Safety instructions

The safety notes in these operating instructions are highlighted by symbols. The safety notes are introduced by signal words which express the concern of the risk.



DANGER!

This combination of symbol and signal words indicates an imminently dangerous situation which may lead to death or severe injury if not avoided.



WARNING!

This combination of symbol and signal words indicates a potentially dangerous situation which may lead to death or severe injury if not avoided.

**CAUTION!**

This combination of symbol and signal words indicates a potentially dangerous situation which may lead to slight or minor injury if not avoided.

**ATTENTION!**

This combination of symbol and signal words indicates a possibly dangerous situation which may lead to property and environmental damages if they are not avoided.

**NOTE !**

This combination of symbol and signal words indicates a potentially dangerous situation which may lead to material or environmental damage if not avoided.

Tips and recommendations**Tips and recommendations**

This symbol highlights useful tips and recommendations as well as information for an efficient and trouble-free operation.

It is necessary to observe the safety notes written in these operating instructions in order to reduce the risk of personal injuries and damages to property.

2.2 Obligations of the operating company**of the operator**

The operating company is the person who operates the vacuum cleaner for business or commercial reasons by herself, or leaves it to a third party for use or application, and who bears the legal product responsibility for the protection of the user, the staff or for third parties.

Obligations of the operating company

If the vacuum cleaner is used for commercial purposes, the operating company of the vacuum cleaner must comply with the legal working safety regulations. Therefore, the safety notes in this operating manual, as well as the safety, accident prevention and environment protection regulations applying for the area of application of the vacuum cleaner must be met. The following applies in particular:

- The operating company must be informed about the applying industrial safety regulations and further analyse hazards resulting from the special working conditions at the place of use of the vacuum cleaner. She must implement these in form of operating manuals for the operation of the vacuum cleaner.
- During the entire lifetime the vacuum cleaner, the operating company must verify whether the operating manuals prepared by her correspond to the current status of the regulations, and must adapt these if necessary.
- The operating company must unambiguously regulate and determine the responsibilities for installation, operation, troubleshooting, maintenance and cleaning.
- The operating company must ensure that all persons who work with the vacuum cleaner, have read and understood this manual. Furthermore she must instruct the staff in regular intervals and inform them about the hazards.
- The operator must provide the necessary protective equipment to the staff and order the use of the necessary protective equipment in a binding way.

Furthermore the operating company is responsible to keep the vacuum cleaner always in a technically flawless state. Thus, the following applies:

- The operator must ensure that the maintenance intervals described in this manual are kept.
- The operator must have all safety devices checked regularly for their good working order and their integrity.

2.3 Requirements to staff

Qualifications

The different tasks described in this manual represent different requirements to the qualification of the persons entrusted with these tasks.



WARNING!

Danger in case of insufficient qualification of the staff!

Insufficiently qualified persons cannot estimate the risks while using the vacuum cleaner and expose themselves and others to the danger of severe or lethal injuries.

- Have all works only performed by qualified persons.
- Keep insufficiently qualified persons out of the working area.

Only persons reliable working procedures can be expected from, are allowed to perform all works. Persons the responsiveness of which is affected by e. g. drugs, alcohol or medication, are not allowed to work with the machine.

The qualifications of the personnel for the different tasks are mentioned below:

Operator

The operator is instructed by the operating company about the assigned tasks and possible risks in case of improper behaviour. Any tasks which need to be performed beyond the operation in the standard mode must only be performed by the operator if it is indicated in these instructions and if the operating company expressly commissioned the operator.

Electrically qualified person

Electrically qualified person is due to their professional training, knowledge and experience as well as knowledge of the relevant standards and regulations, in a position to carry out work on the electrical systems and to independently recognize and avoid possible dangers.

Qualified personnel

Due to their professional training, knowledge and experience as well as their knowledge of relevant regulations the specialist staff is able to perform the assigned tasks and to recognise and avoid any possible dangers themselves.

Manufacturer

Certain works may only be performed by specialist personnel of the manufacturer. Other personnel is not authorized to perform these works. Please contact our customer service for the execution of all arising work.

2.4 Personal protective equipment

The personal protective equipment serves to protect persons against impairments of safety and health while working. The staff member has to wear personal protective equipment while performing different tasks on and with the machine which are indicated in the individual paragraphs of these instructions.

The personal protective equipment is explained in the following paragraph:



Protective gloves

The protective gloves serve to protect the hands against sharp components as well as against friction, abrasions or deep injuries.



Safety boots

Safety boots protect the feet from being crushed, falling parts and slipping over on slippery ground.



Protective clothes

Protective clothes are made of a tightly fitted fabric without the protruding parts of low tear strength.

2.5 General safety regulations


Please note the following:

Use the safety devices and fasten them securely. Never work without safety equipment and keep it in good working order.

- Keep the machine and your work environment clean at all times. Ensure sufficient illumination.
- The vacuum cleaner's design must not be changed; the machine must not be used for work not intended by the manufacturer.
- Never work under the influence of illnesses that impair concentration, drugs, alcohol or medication.
- Do not use the mains cable to pull the plug out of the socket. Protect the cable against heat, oil and sharp edges.
- Malfunctions impair the safety, please this rectify immediately.
- Protect the vacuum cleaner against humidity (risk of short circuit!).
- Before using the vacuum cleaner make sure that no parts are damaged. Replace damaged parts immediately to avoid sources of danger!
- Never overload the mvacuum cleaner! Working within the stated performance limits is better and safer.
- Use only genuine spare parts and accessories to avoid potential risks and risk of accident.




WARNING!
Do not pick up any liquid.



WARNING!
Do not vacuum any incandescent material!



WARNING!
Do not vacuum of burning ashes!



WARNING!
Do not vacuum anything that is warmer than 40 ° C!

WARNING!
Don't ever point the suction towards delicate parts of the body – of people or animals - such as eyes, ears, mouth, etc.

WARNING!
The device should be considering its weight, i.e. be stored on a stable, safe, level surface without humidity!

ATTENTION!
Do not use at low temperatures and outdoors!

ATTENTION!
Only use the parts supplied with the device or than, that are specified in the instructions. The use of other parts can impair the safety.

WARNING!
Never leave the running device unattended. Always disconnect the power plug from the power socket when not in use. Keep the device out of the reach of children or unauthorized persons.

WARNING!
The connection for additional accessories may only be used for the suction of ash. If this instruction is ignored, it can guide to the fire or other deadly consequences for the user.

WARNING!
The device is not suitable for environments that are protected against electrostatic discharges

2.6 Safety labels on the vacuum cleaner

The following safety labels and instructions are attached to the vacuum cleaner (Fig. 1) and must be observed.

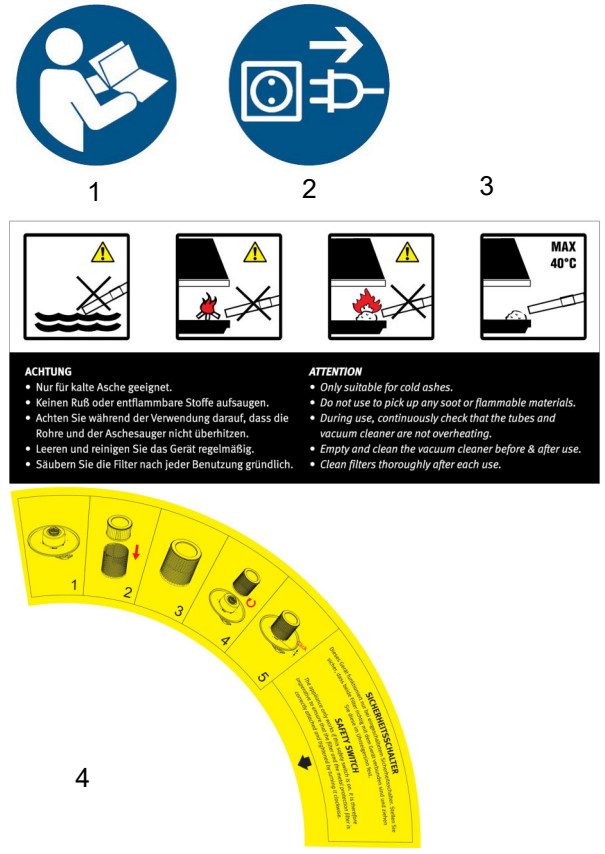


Fig. 1: 1, 2 Mandatory sign, 3 Warning symbols, 4 Note on the safety switch.

If safety labels on the machine are damaged or missing, this can cause errors, personal injury and material damage. The safety symbols attached to the machine must not be removed. Damaged safety symbols must be replaced immediately.

As soon as the signs are not clearly visible and comprehensible at first glance, the machine must be stopped until new signs have been attached.

3 Intended use

The vacuum cleaner is exclusively intended for the suction of the ash, sand and other dirt, and when using a blowing function e.g. to blow off of the surfaces. The vacuum cleaner must not be operated in the potentially explosive environments.

The proper use also includes observing all indications in these operating instructions. Any use beyond the proper use or any other use is regarded as misuse. Under no circumstances may personnel be lifted.

Stürmer Maschinen GmbH accepts no liability for any constructional or technical modifications carried out on the electric vacuum cleaner.

Any claims due to damages because of not intended use are excluded.



WARNING!

Any change on the vacuum cleaner is prohibited. The change may void the warranty, cause burns and personal injury, even fatal for the user.

The manufacturer will not be liable for any damage that the results from failure to follow these instructions or from the misuse of the equipment to objects or persons.

3.1 Unintended use



WARNING!

Dangers in case of unintended use!

Unintended use of the vacuum cleaner can cause hazardous situations.

- Only operate the vacuum cleaner within the performance limits stated in the technical data.
- Do not bypass or disarm safety equipment.
- Only use the vacuum cleaner in technically perfect condition.



ATTENTION!

The vacuum cleaner is not suitable to absorb dangerous dust. do not vacuum any soot, flammable, explosive or poisonous substances and liquids. The maximum permissible temperature for absorbing substances is 40 ° C / 104 ° F.

- do not vacuum the aggressive cleaning agents, as they could damage the device.
- do not vacuum the materials, which can damage or clog the filter elements (e.g., powder, toner, gypsum, and other very small particle size substances).
- do not vacuum the water or other liquids!

3.2 Residual risks

Even if all safety instructions are observed, and the machine is put to its intended use, there are still residual risks, which are listed below:

- Risk of injury of upper and lower limbs while equipment is operating.

4 Technical Data

4.1 Table

Model	flexCAT 120 VCA
Vacuum cleaner type	dry
Electrical connection	230 V / 50 Hz
Rating	1200 W
Air volume	1500 l/min
Tank volume	20 Liter
Hose diameter	38 mm
Hose length	1,5 m
Number of motors	1
Output stage	single-stage
Motor cooling	Bypass ½"
Sound pressure level	76 dB(A)
Cable length	3,5 m
Negative pressure	150 mbar
Filter surface	150 cm ²
Tank material	Metal
Dimensions (L x W x H)	310 x 310 x 420 mm
Weight	4,4 kg

4.2 Type plate

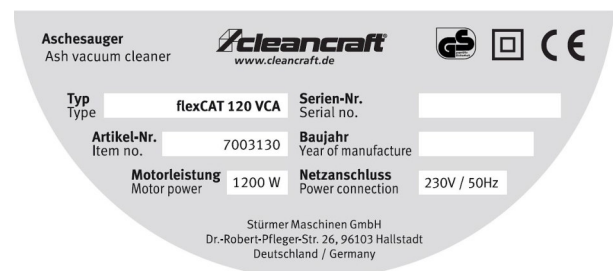


Fig. 2: Type plate

5 Transport, packaging, storage

5.1 Transport

Check the vacuum cleaner on delivery for any visible transportation damage. If you notice any damage to the device please report this immediately to the carrier or dealer.



NOTE!

The vacuum cleaner should be protected from humidity.

5.2 Packaging

All used packaging materials and packaging aids are recyclable and should be taken to a materials recycling depot to be disposed of.

The delivery packaging is made of cardboard, so please dispose carefully by having it chopped up and given to the recycling collection.

The film is made of polyethylene (PE) and the cushioned parts of polystyrene (PS). Deliver these substances to a collection point for recyclable materials or to the waste disposal company which looks after your region.



WARNING!

Danger to life!

The packaging elements may pose potential hazards (e.g., plastic bags):

- Packaging material for children and persons who are unaware of their actions or keep animals inaccessible.

5.3 Storage

The vacuum cleaner should be stored in a dry, frost-free environment.

6 Description of the device



Fig. 3: Description of the device

- 1 Blowing mouth
- 2 Handle
- 3 Switch
- 4 Tank cap
- 5 Flexible metal hose
- 6 Air inlet mouth
- 7 Aluminium suction nozzle
- 8 Tank

6.1 Filter system

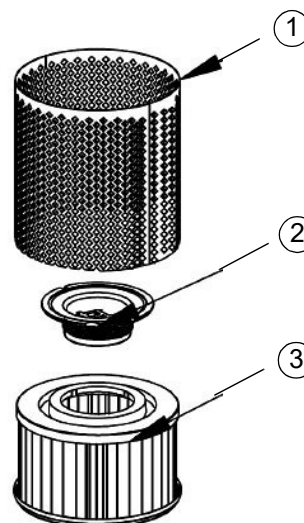


Fig. 4: Filter system

- 1 Metal protective filter
- 2 Filter unit
- 3 Cartridge filter

6.2 Scope of delivery

The Special Vacuum Cleaner is delivered with:



Fig. 5: Scope of delivery

- Suction hose 1 m incl. connectors
- Connecting tube
- Gap attachment
- Cartridge filter
- Metal grating

7 Before first use

Suction function:

Insert the tube connector into the vacuum cleaner and then rotate it clockwise until it locked.

Hand the tube connector, rotate it counter-clockwise until exert the tube.

Blowing function:

Insert the link pipe of the suction hose in the blowing mouth (Pos.1, Fig. 3) and rotate it clockwise until it locked.

8 Operation



DANGER!

Danger of potentially fatal electric shock.

There is a risk of fatal injury from contact with live parts. Electrical components which are switched on can carry out uncontrolled movements and cause serious injuries.

- Disconnect the plug before starting adjustments to the vacuum cleaner.



WARNING!

The device must be correctly installed before use. It must be checked that the filter elements are mounted correctly and that they function correctly. The device should only be operated, mounted, repaired and transported on a stable, flat surface.



WARNING!

Before you handle the switched-off vacuum cleaner unplug the mains plug. Regularly check the power cable and plug for damage (insulation, etc.). A damaged cable must be replaced before further use of the vacuum cleaner. The replacement of a defective power cable must be carried out by the technical service or by qualified personnel. When using the extension cord, make sure that it has the same cable dimension as the power cord of the device. Avoid getting the cable in contact with the liquids or conductive surfaces.



ATTENTION!

Before the unit is put into operation, make sure that the operating voltage indicated on the type plate is the same as the supply voltage available.

8.1 Start and stopping

Start

- Insert the power plug into a suitable power socket
- Turn the ON/OFF switch on the Position „1“.

Stopping

- To switch off the device turn the ON/OFF switch on the Position „0“ and disconnect the power cable.
- By disconnecting always pull on the plug, never on the power cable.

8.2 Emptying the tank

Step 1: Check that the device is shut-off and disconnected from the mains supply.

Step 2: Open the clamping hook and remove the tank cap.

Step 3: Remove the filters and empty the tank.

Step 4: Put the filters back on the tank. Make sure that the filters correctly and tight seat.

Step 5: Put back the tank cap (check the right position!)
Close the clamping hook. Check the tight closing of the cap.

8.3 Controlling of the seal

Over time, the quality of the seal may deteriorate as a result of the aging or damage. This leads to a decrease in the suction power. We recommend regularly checking the clamping hooks, flexible suction hoses and seals for a perfect function.

Clean all seals after completing work. The fouling can prevent a correct function and cause the damage.

Check that the edgings of the tank are not damaged.

9 Care, maintenance and repair



DANGER!

Danger of potentially fatal electric shock.

There is a risk of fatal injury from contact with live parts. Electrical components which are switched on can carry out uncontrolled movements and cause serious injuries.

- Disconnect the plug before starting cleaning and maintenance.



WARNING!

The cleaning must not be done by children, if they are not controlled by adults.

Maintenance and repair works must only be performed by specialists.

Use only original spare parts in case of a repair.

9.1 Care by cleaning



ATTENTION!

Do not use aggressive chemicals, solvents or abrasives. A detachment of the surface and the resulting consequential damage can occur.

The vacuum cleaner must always be kept in a clean condition.



Use protective gloves!

Wear the suitable protective gloves by the cleaning to protect against injury from chips.

Always empty the tank and clean the vacuum cleaner after the vacuuming

Clean all plastics and paint surfaces on the vacuum cleaner with a lightly moistened cloth.

Keep the ventilation slots of the engine clean to ensure adequate cooling.

9.2 Cleaning of the filter

Step 1: Loose the filter.

Step 2: Clear the dust inside the tank and clean the filter with a brush (Fig. 6).

Step 3: Put the filter back to original position.



Fig. 6: Cleaning of the filter

9.3 Maintenance and repair



ATTENTION!

- Maintenance and repair works must only be performed by specialists.
- Use only original spare parts in case of a repair.

If the vacuum cleaner is not functioning properly, contact a specialised dealer or our customer service. Please find the contact data on chapter 1.2 Customer service.

10 Disposal, recycling of used devices

Please take care in your own interest and in the interest of the environment that all component parts of the machine are only disposed of in the intended and permitted way.

10.1 Decommissioning

Immediately decommission disused machines in order to avoid later misuse and endangering of the environment or personal safety.

Step 1: Eliminate all environmentally hazardous operating materials from the used device.

Step 2: If required, disassemble the machine into easy-to-handle and usable components and parts.

Step 3: Dispose of machine components and operating materials by the disposal channels provided.

10.2 Waste disposal of electric equipment

Please note that electrical devices contain a variety of recyclable materials as well as environmentally harmful components.

You contributes to that these components are disposed of separately and properly. In case of doubt, please contact your municipal waste disposal.

As necessary, a specialized waste disposal company can help be used for the treatment.

10.3 Disposal of lubricants

Remove any leaking, used or excessive grease at the lubricating points.

Disposal notes for used lubricants are available from the manufacturer of the lubricants. If necessary, request the product-specific data sheets.

10.4 Disposal of the filter

The filters are made of the environmentally friendly materials. You can dispose the filter in the normal household waste, as long as it contains no dirt prohibited in the household waste.

11 Malfunctions, their potential causes and remedies



IMPORTANT!

If one of the following malfunctions occurs, immediately stop working with the device. Before you start troubleshooting, turn off the device and unplug the power plug. Failure to do so can lead to serious injury.

All repairs or replacement work may be performed by qualified and trained expert staff only.



NOTE!

If you can not eliminate the problems with your vacuum cleaner yourself, then please contact your CLEANCRAFT dealer. Please mark down the following information from the vacuum cleaner or instruction manual, this will help you best with your problem.

- designation of the device
- serial number
- year of manufacture
- detailed fault description

Mal-function	Possible cause	Remedy
Machine not working.	<ol style="list-style-type: none"> 1. Power plug is not plugged in. 2. Power supply cables defective. 3. Switch defective 4. Motor defective 	<ol style="list-style-type: none"> 1. Plug in the power plug. 2. Call a service technician 3. Call a service technician 4. Call a service technician
Suction decreases.	<ol style="list-style-type: none"> 1. Blockages in the suction nozzle, suction hose or filter. 2. Seals are not tight. 	<ol style="list-style-type: none"> 1. Remove the blockages, clean the filter 2. Clean the seals or replace the seals. 3. Check the fit of the filters and the tank cap. 4. Check the hose and connections for the tightness.

12 Spare parts



DANGER!

Danger of injury by the use of wrong spare parts!

Dangers may result for the user and damages as well as malfunctions may be caused by using wrong or damaged spare parts.

- Only use original spare parts of the manufacturer or spare parts admitted by the manufacturer.
- Always contact the manufacturer in case of uncertainties.



Tips and recommendations

The manufacturer's warranty will become null and void if non-permissible spare parts are used

12.1 Ordering spare parts

The spare parts may be purchased with the authorised dealer or directly with the manufacturer. Please find the corresponding contact data in Chapter 1.2 Customer service.

Indicate the following basic information for requests or orders of spare parts:

- Type of device
- Item No.
- Position No.
- Year of construction:
- Quantity
- Required mode of dispatch (mail, freight, sea, air, express)
- Address of dispatch

Spare part orders which do not include the above indications may not be taken into consideration. If the indications regarding the mode of dispatch are missing, the product is dispatched at the discretion of the supplier.

You will find information regarding the device type, item No. and year of manufacture on the type plate fixed on the vacuum cleaner.

Example

The filter for the Vacuum cleaner flexCAT 120 VCA must be ordered. The filter has the number 11 in the spare parts drawing.

By ordering spare parts, send a copy of the spare parts drawing with the marked part (filter) and marked position number (11) to the dealer or spare parts department and provide the following information:

- Type of device: **Vacuum Cleaner flexCAT 120 VCA**
- Item number: **7003130**
- Position number: **11**

12.2 Spare parts drawing

In case of service, the following drawing shall help to identify the necessary spare parts. If necessary, send a copy of the parts drawing with the marked components to your authorised dealer.

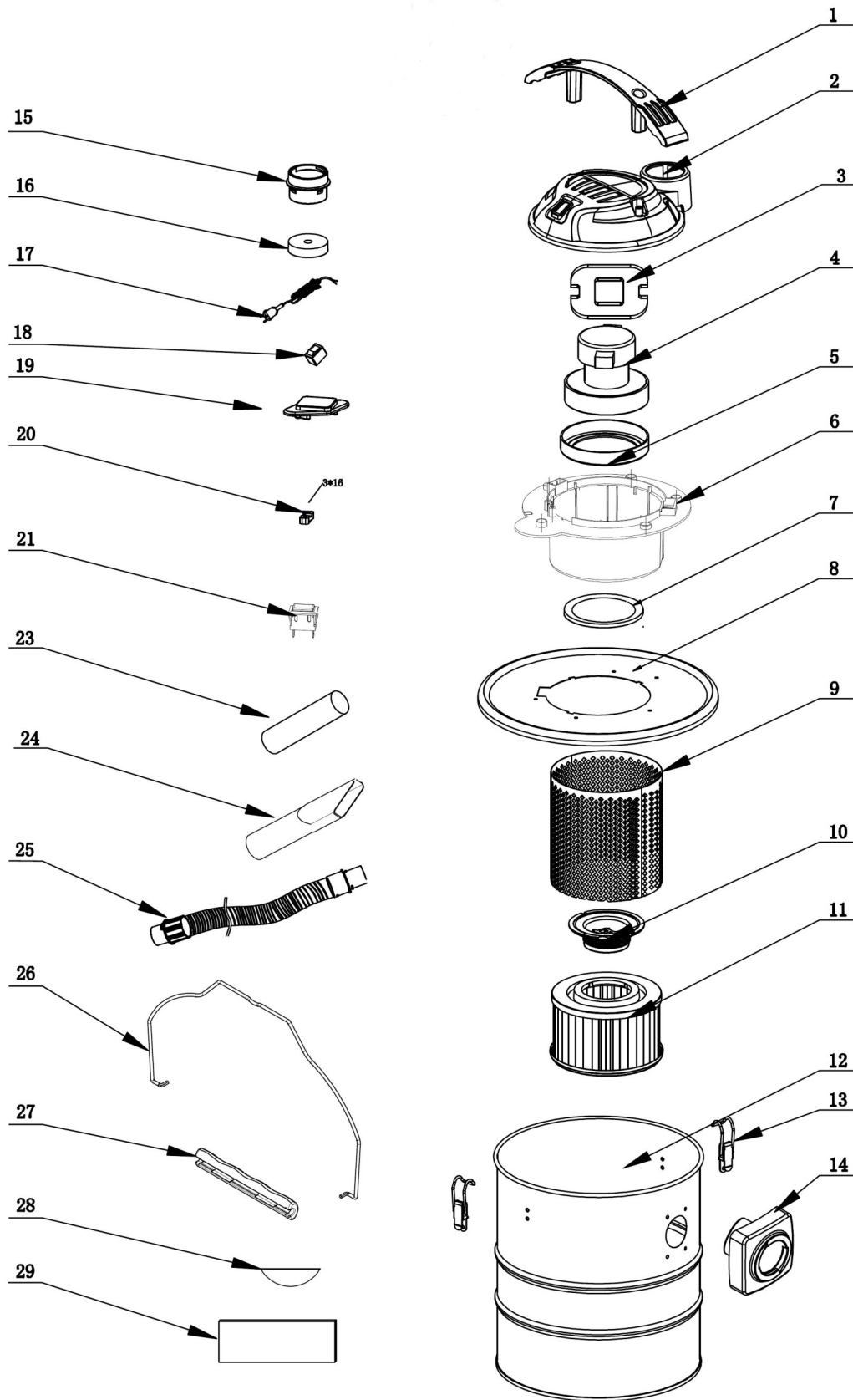


Fig. 7: Spare parts drawing

13 EC-Declaration of Conformity

Manufacturer / distributor: Stürmer Maschinen GmbH
 Dr.-Robert-Pfleger-Str. 26
 D-96103 Hallstadt

hereby declares that the following product

Product Category: Cleancraft® Special Vacuum Cleaner

Designation of the machine: flexCAT 120 VCA

Item number: 7003130

Serial number *: _____

Year of manufacture *: 20____

*please fill in according to the information on the type plate

complies with all relevant provisions of the applied directives (below) - including their applicable modifications at the time of the declaration.

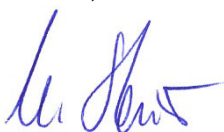
Relevant EU Directives: 2011/65/EU RoHS
 2014/30/EU EMC-Directive
 2009/125/EG ErP Directive (Ecodesign directive)

Following standards where applied:

- DIN EN 60335-1:2012/A11:2014 Household and similar electrical appliances - Safety - Part 1: General requirements (IEC 60335-1:2010, modified)
- DIN EN 60335-2-2:2010/A1:2013 Household and similar electrical appliances - Safety - Part 2-2: Particular requirements for vacuum cleaners and water-suction cleaning appliances
- DIN EN 62233:2008 Measurement methods for electromagnetic fields of household appliances and similar apparatus with regard to human exposure
- DIN EN 55014-1 Electromagnetic compatibility - Requirements for household appliances, electric tools and similar apparatus - Part 1: Emission
- DIN EN 55014-2 Electromagnetic compatibility - Requirements for household appliances, electric tools and similar apparatus - Part 2: Immunity - Product family standard
- DIN EN 61000-3-2 Electromagnetic compatibility (EMC) - Part 3-2: Limits - Limits for harmonic current emissions (equipment input current <= 16 A per phase) (IEC 61000-3-2:2014)
- DIN EN 61000-3-3 Electromagnetic compatibility (EMC) - Part 3-3: Limits - Limitation of voltage changes, voltage fluctuations and flicker in public low-voltage supply systems, for equipment with rated current <= 16 A per phase and not subject to conditional connection
- DIN EN 50564:2011-12 Electrical and electronic household and office equipment - Measurement of low power consumption
- DIN EN 62321:2009 Electrotechnical products - Determination of levels of six regulated substances (lead, mercury, cadmium, hexavalent chromium, polybrominated biphenyls, polybrominated diphenyl ethers)

Responsible for documentation: Kilian Stürmer, Dr.-Robert-Pfleger-Str. 26, D-96103 Hallstadt

Hallstadt, 13.04.2016



Kilian Stürmer
 CEO, Director



14 Notes

