

de	Handbuch - Gehörschutz	2	pl	Podręcznik - ochronnik słuchu	61
en	Manual - ear protection	6	pt	Manual - Proteção auditiva	65
fr	Manuel - Protection auditive	10	ro	Manual - Căști antifonice	69
es	Manual - Protección de oídos	14	sk	Príručka - Chránič sluchu	73
bg	Ръководство - Защитни наушници	18	sv	Manual - Hörselskydd	77
cs	Příručka - chrániče sluchu	22			
da	Manual - høreværn	26			
et	Käsiraamat: kuulmiskaitse	30			
fi	Käyttöohjekirja - Kuulonsuo- jaimet	34			
hu	Kézikönyv - Hallásvédő	38			
it	Manuale - Protezione dell'udito	42			
lt	Techninė instrukcija - Ausinės	46			
lv	Rokasgrāmata - dzirdes aizsar- gierīce	50			
nb	Håndbok - hørselvern	54			
nl	Handboek - gehoorbescherming	57			

GHS 25 I GHS 25 I US



Contents

1 Symbols.....	6
2 Parts of the device / Functional description.....	6
3 Commissioning.....	6
4 Bluetooth® connection.....	8
5 Operation.....	8
6 General information.....	9

1 Symbols



Warning of general danger



Read the operating manual and safety warnings.



CE marking: Confirms the machine's compliance with European Community directives.



UKCA marking: Confirms the conformity of the product with UK regulations.



Do not dispose of it with domestic waste.



Tip or advice



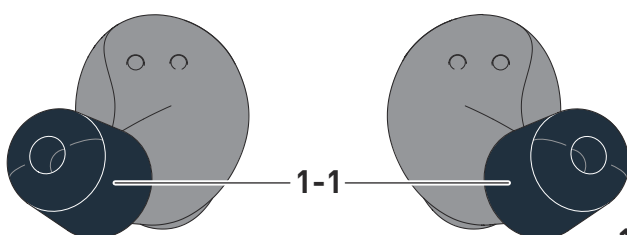
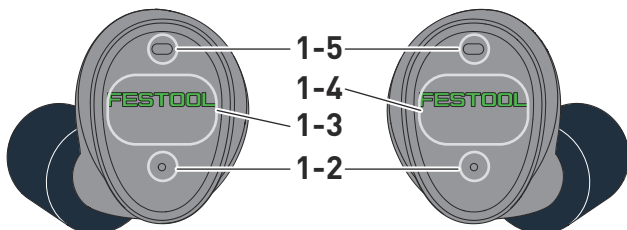
Handling instruction

A Amperes

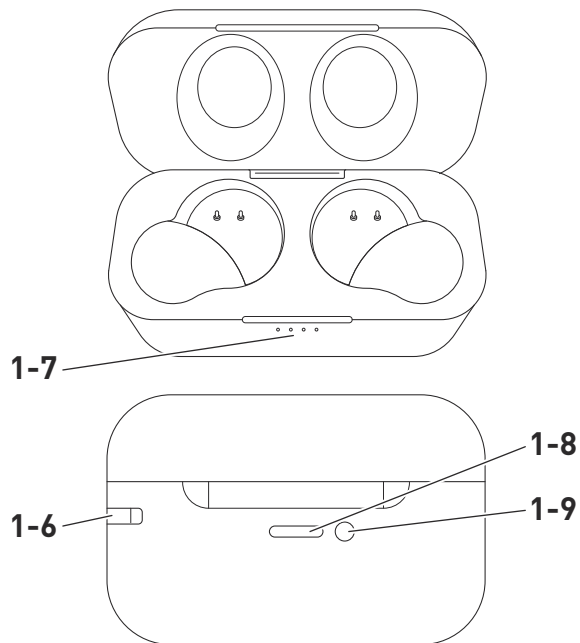
V Volt

dB Sound pressure level

2 Parts of the device / Functional description



1A



1B

[1-1] Earpiece

[1-2] Hearing protection LED indicator

[1-3] Touch surface (L = left)

[1-4] Touch surface (R = right)

[1-5] Microphone

[1-6] Mounting for hand strap

[1-7] LED display for charging case

[1-8] Charging port (output compatible with USB-C™)

[1-9] State of charge/reset button

3 Commissioning



WARNING! Observe all the instructions and safety warnings in the Original Instructions.

3.1 Charging

Charging the hearing protection

- ▶ Insert the hearing protection into the respective recess in the charging case. *The LED display [1-2] of the hearing protection will light up red during the charging process.*
- ▶ Wait until the LED indicator lights up blue.

Charging the charging case

- ▶ Connect the mains adapter with the USB cable supplied.
- ▶ Connect the USB cable with the charging port **[1-8]** of the charging case.
- ▶ Insert the mains adapter into a mains outlet.

The LED indicator [1-7] of the charging case flashes during the charging process.

- ▶ Wait until the LED indicator lights up completely.

Checking the state of charge

- ⓘ The charging case and the hearing protection automatically show the state of charge on the LED indicator for ten seconds after opening the charging case.

Checking the state of charge of the charging case

- ▶ Press the button [1-9] on the reverse of the charging case.

Checking the state of charge of the hearing protection

- ▶ View the state of charge of the hearing protection either in the charging case or under the active **Bluetooth®** connection on the smartphone.

3.2 LED displays

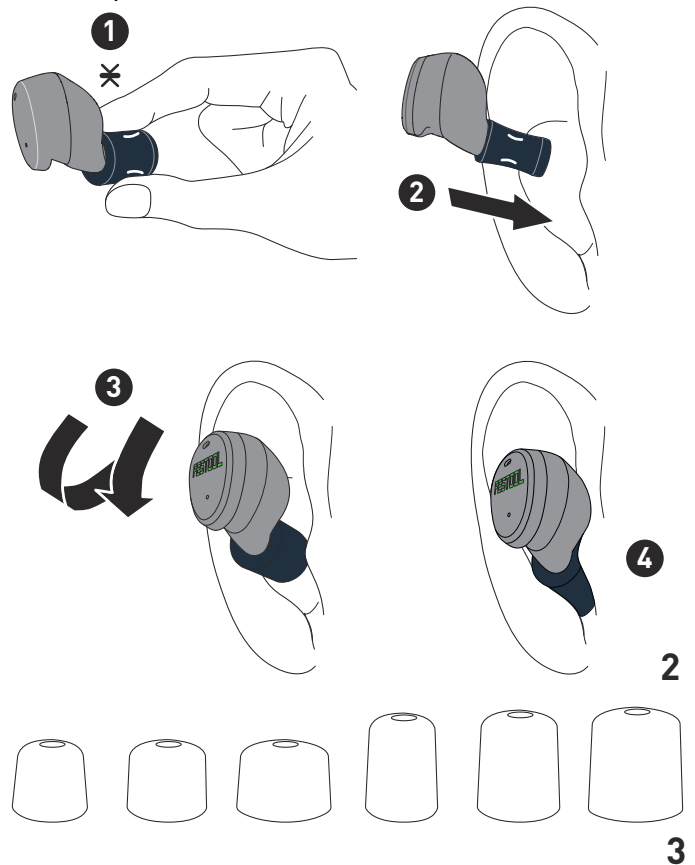
Hearing protection LED indicator	Meaning
LED flashes blue and red alternately.	Bluetooth® connection mode.
LED flashes blue three times.	Connected via Bluetooth®.
LED lights up red (in charging case).	Hearing protection is being charged.
LED lights up blue (in charging case).	Hearing protection fully charged.

LED display for charging case	Meaning
LED flashes white.	Charging case is being charged.
LEDs (1-4) light up white.	Current state of charge (25%, 50%, 75%, 100%).
All LEDs flash white.	Reset has been completed.

Inserting the hearing protection [2]

- ▶ ① Screw an appropriate earpiece [3] with the thread onto the hearing protection and press the earpiece together lightly with your fingers.
- ▶ ② Insert the left and right hearing protection (see marking: L = left, R = right) into the left and right ear respectively. Insert the hearing protection with the earpiece as deeply into your ear as is comfortable.

- ▶ ③ Rotate the hearing protection slightly until it is sitting securely in the visible part of your ear.
- ▶ ④ Ensure that the hearing protection is seated close to the edge of the inner ear. If required, switch to larger or smaller earpieces [3].



3.3 Switching on

Method 1

- ▶ Open the charging case and remove the hearing protection.
The hearing protection will switch on automatically.

Method 2

- ▶ Keep touching the touch surface [1-3]/[1-4] of the hearing protection until the message "Power on" can be heard.

3.4 Switching off

Method 1

- ▶ Store the hearing protection in the charging case.
The hearing protection will switch off automatically.

Method 2

- ▶ Keep touching the touch surface [1-3]/[1-4] of the hearing protection until the message "Power off" can be heard.

- ⓘ The hearing protection automatically switches off if not used for two hours.


4 Bluetooth® connection

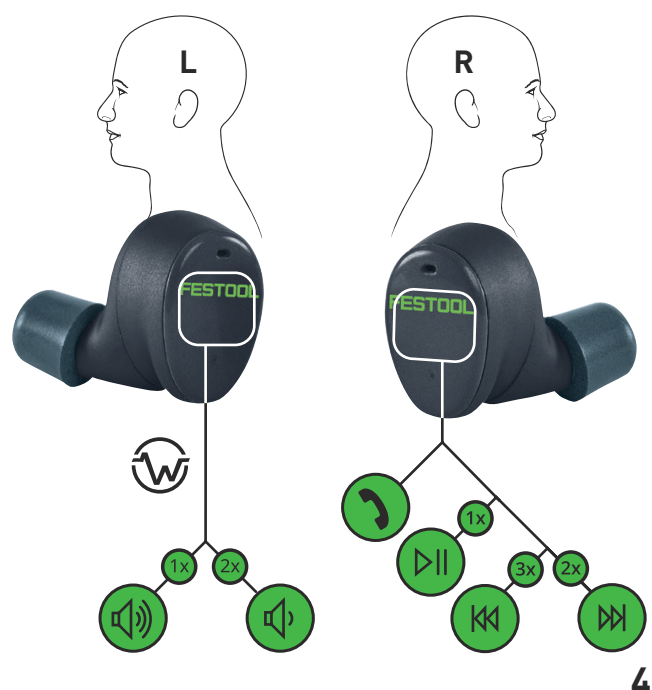
4.1 Pairing hearing protection with Bluetooth®

- ▶ Switch on the hearing protection and wait until the message "Bluetooth pairing mode" can be heard.
- ▶ Open the Bluetooth® settings on the device to be connected.
- ▶ Select the entry "Festool GHS 25I" and authorise the connection.

The hearing protection confirms the connection with the message "Bluetooth connected" and the LED display flashes blue three times.

5 Operation

 Quick guide videos



- ⓘ If just one side of the hearing protection is removed from the charging case and used, the functionality of the right hearing protection automatically applies to that side.

5.1 Phoning

Accepting a call

- ▶ Tap once on the touch surface [1-4].

Ending a call

- ▶ Press and hold the touch surface [1-4].

Rejecting a call

- ▶ Press and hold the touch surface [1-4].

Putting a call on hold

- ▶ Tap twice on the touch surface [1-4] during an active call.

Muting/unmuting

- ▶ Tap once on the touch surface [1-4] during an active call.

5.2 Audio playback

Playback/Pause

- ▶ Tap once on the touch surface [1-4].

Next track

- ▶ Tap twice on the touch surface [1-4].

Previous track

- ▶ Tap three times on the touch surface [1-4].

5.3 Activating Siri/Google Assistant

- ▶ Press the touch surface [1-4] for two seconds.

5.4 Controlling the audio volume

The volume of music/calls is controlled by the paired device (e.g. smartphone).

- ⓘ The hearing protection uses SafeMax™ technology to effectively limit the sound pressure level of audio signals to <82 dB(A) (GHS 25 I) / <85 dB(A) (GHS 25 I US).

5.5 Controlling the ambient volume

The device has two Aware™ modes. Ambient noises can thus be heard at a safe listening volume.

- ⓘ The device is always set to the highest Aware™ mode once it is switched on.

Increasing the ambient volume

- ▶ Tap once on the touch surface [1-3].

The increase in the volume is confirmed by a beep.

Reducing the ambient volume

- ▶ Tap twice on the touch surface [1-3].

The reduction in the volume is confirmed by a beep.

- ⓘ A double beep means that the respective maximum/minimum volume has already been reached.

- ⓘ Tapping again twice completely switches off the Aware™ mode.

5.6 Troubleshooting

Resetting to factory settings

In the event of problems with switching off, pairing or the functions of the touch surface, the device can be reset to factory settings.

- ▶ Store the hearing protection in the charging case.

- ▶ When the charging case is opened, press the button **[1-9]** for five seconds.

The LEDs on the charging case flash to confirm the reset.

6 General information

6.1 Information about Bluetooth®

As soon as the tool is connected to the mobile device via Bluetooth® and the secure connection has been authorised, the tool will connect automatically to the mobile device from this point onwards.

The Bluetooth® word mark and the logos are registered trademarks of Bluetooth SIG, Inc.; they are used by TTS Tooltechnic Systems AG & Co. KG, and therefore by Festool, under licence.