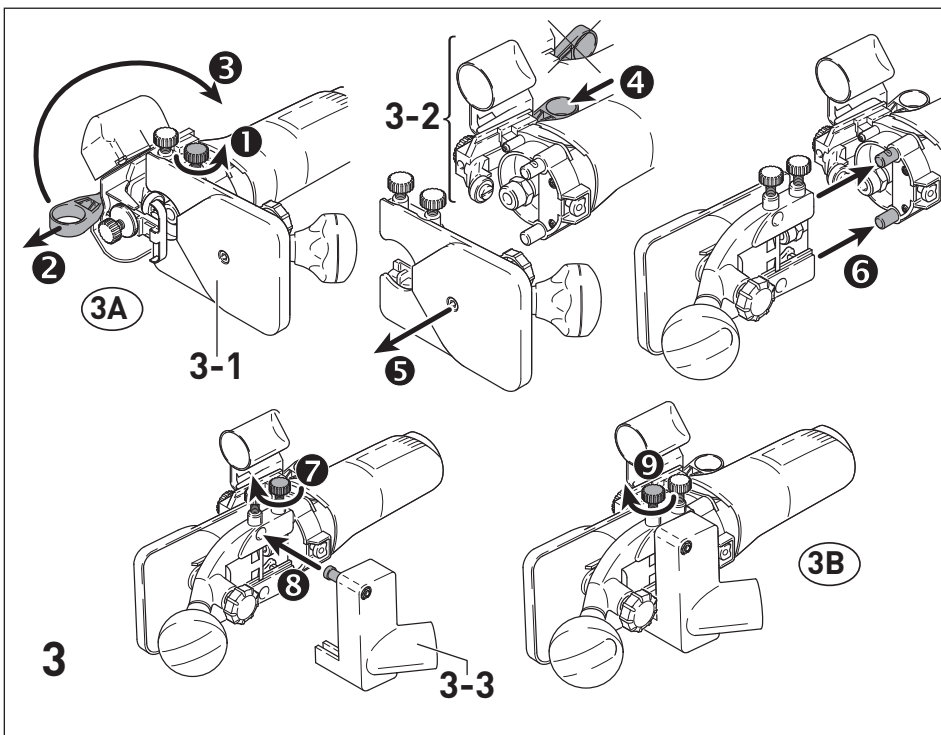
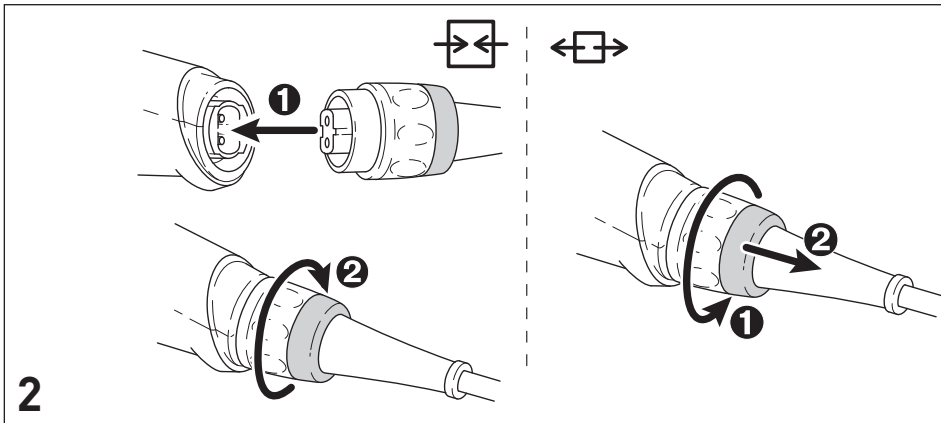
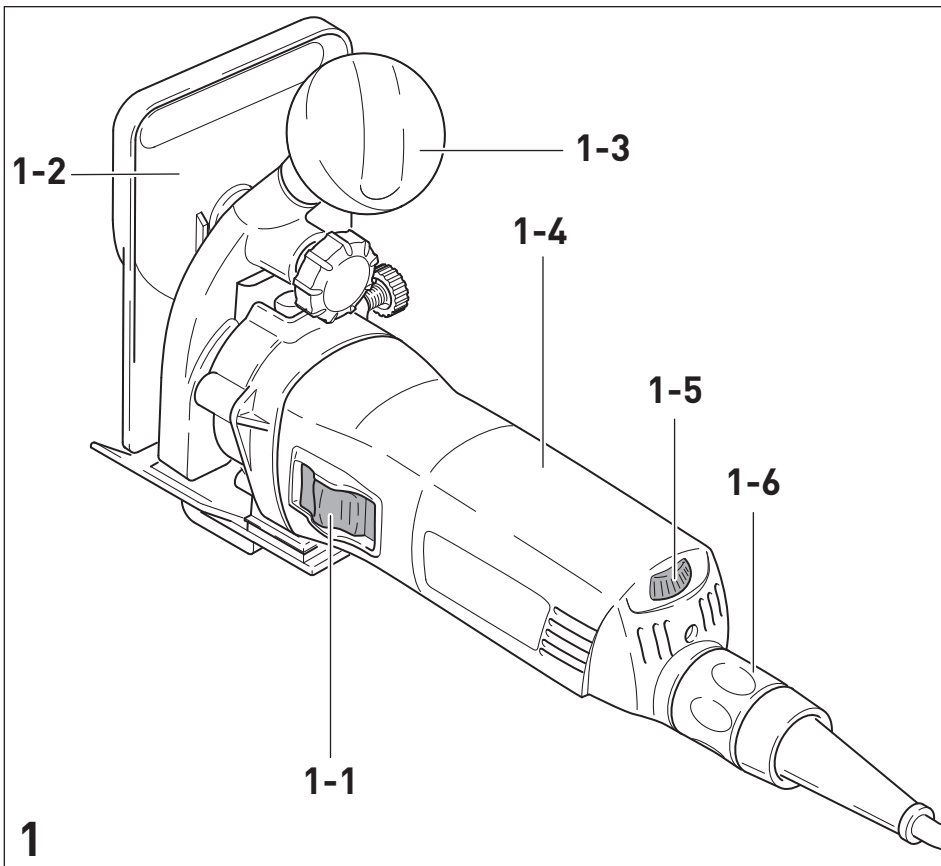
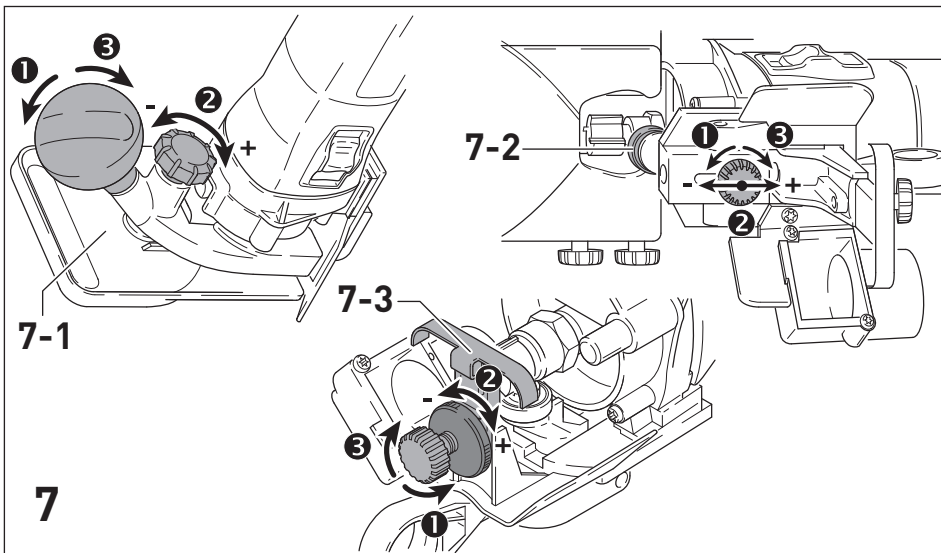
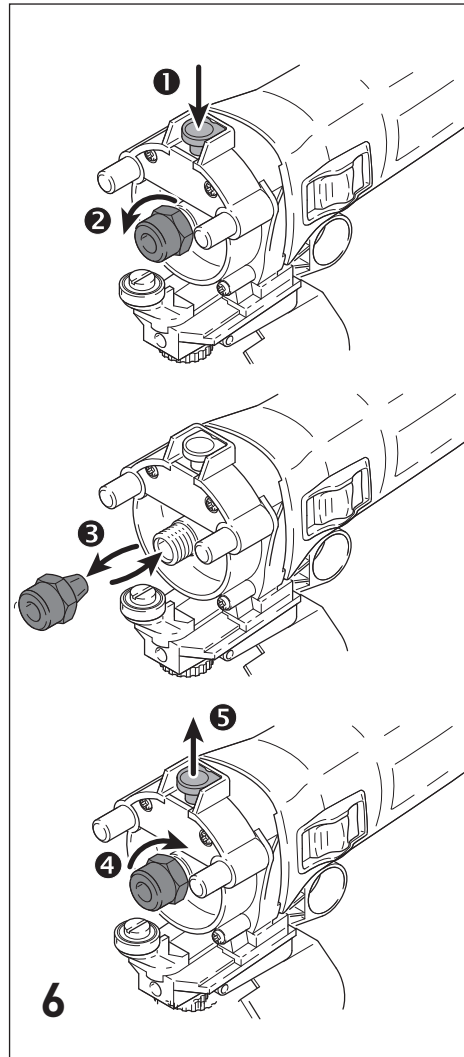
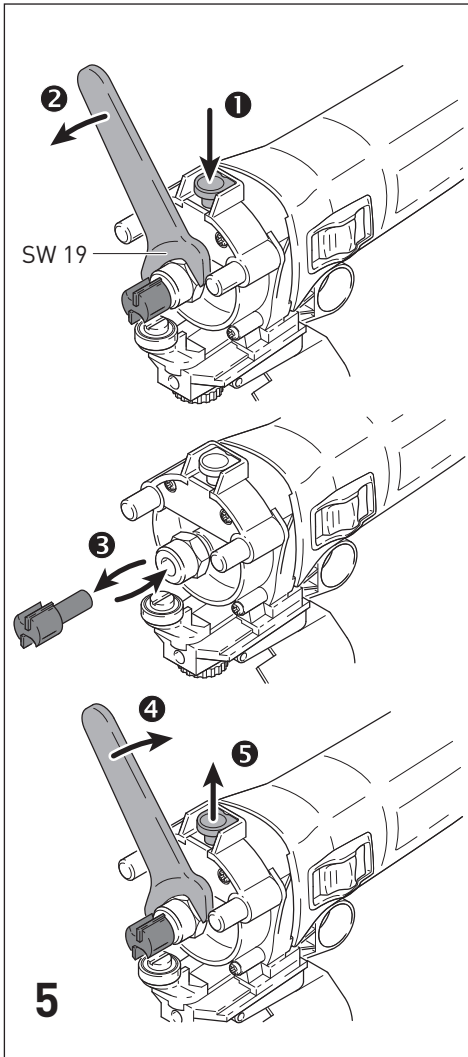
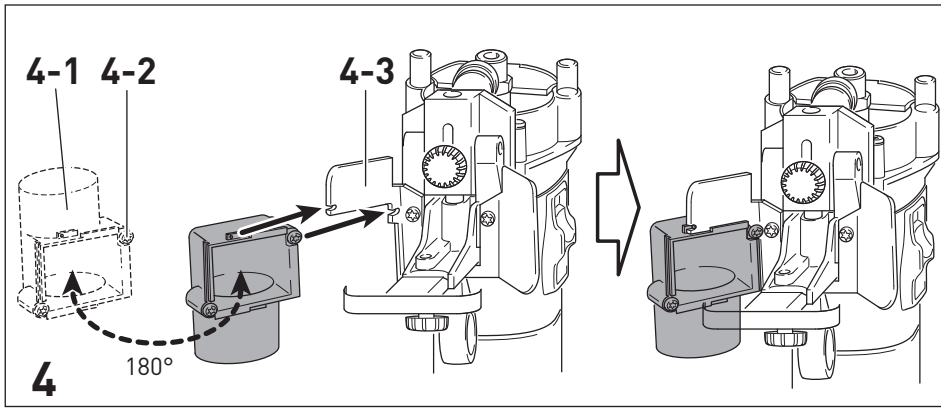


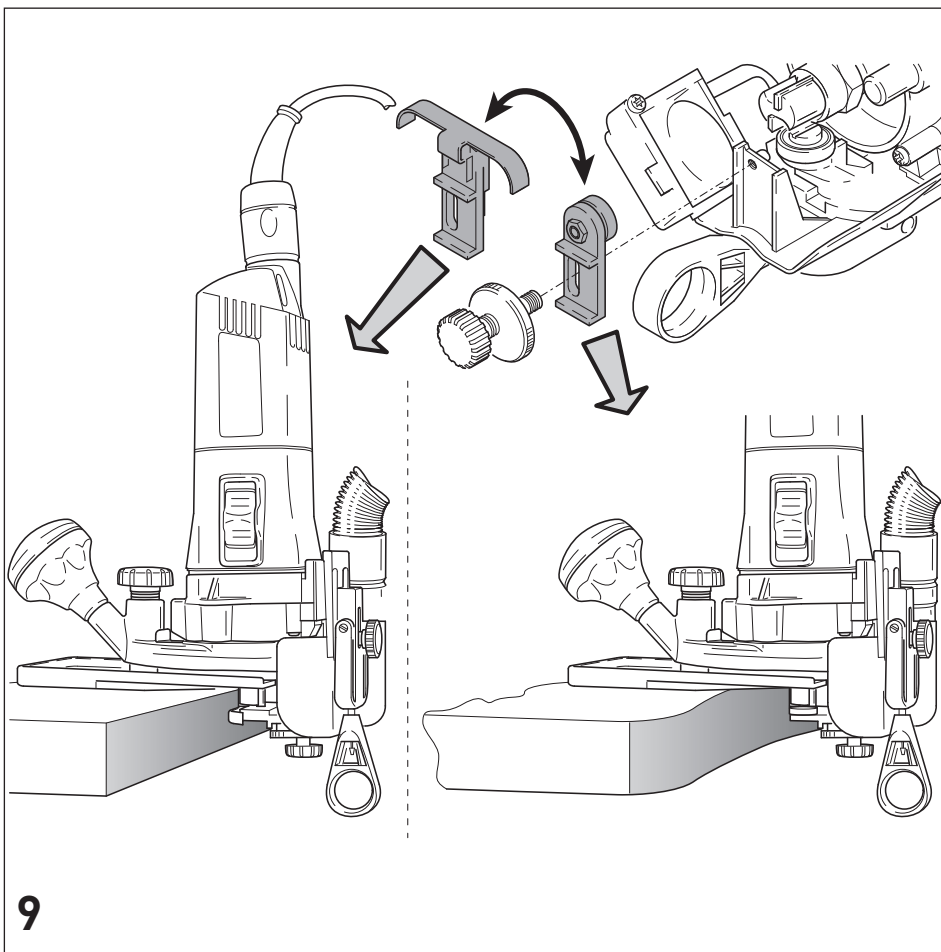
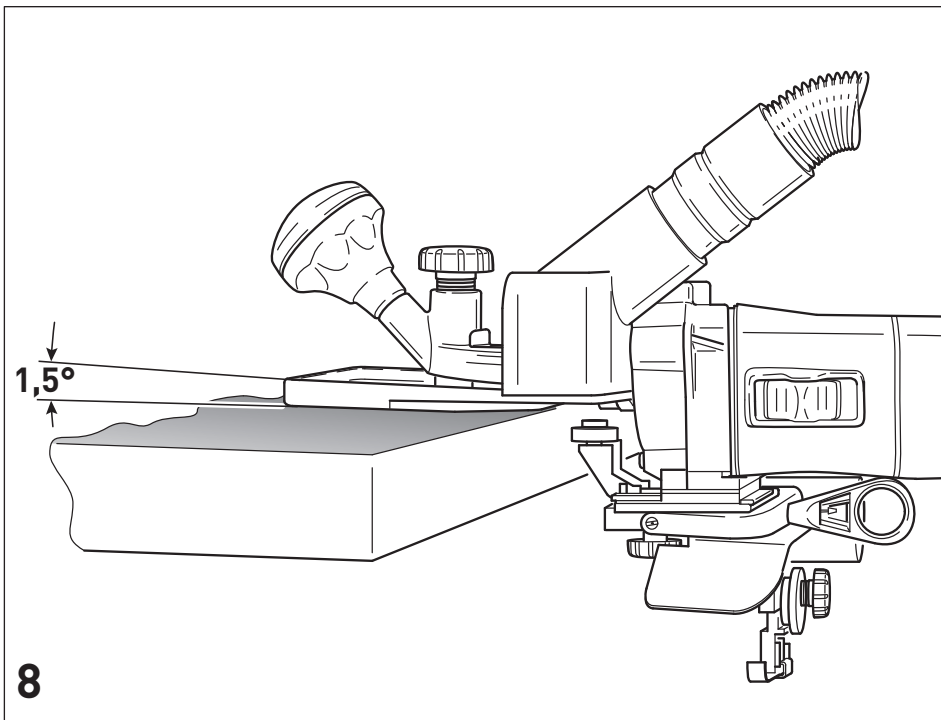
de	Originalbetriebsanleitung - Kantenfräse	8
en	Original instructions - Edge router	13
fr	Notice d'utilisation d'origine - Affleureuse	18
es	Manual de instrucciones original - Lijadora de cantos	23
it	Istruzioni per l'uso originali - Rifilatore	29
nl	Originele gebruiksaanwijzing - kantenfrees	34
sv	Originalbruksanvisning - Kantfräs	39
fi	Alkuperäiset käyttöohjeet - Reunajyrsin	44
da	Original brugsanvisning - kantfræser	49
nb	Original bruksanvisning – kantfres	54
pt	Manual de instruções original - Fresadora para arestas	59
ru	Перевод оригинального руководства по эксплуатации — кромочный фрезер	64
cs	Originální návod k obsluze – hranová frézka	70
pl	Oryginalna instrukcja obsługi - frezarka do krawędzi	75

OFK 700 EQ









Kantenfräse
Edge router
Affleureuse

Seriennummer *
Serial number *
N° de série *
(T-Nr.)

OFK 700 EQ

10488475

de EU-Konformitätserklärung. Wir erklären in alleiniger Verantwortung, dass dieses Produkt mit allen relevanten Anforderungen folgender EU-Richtlinien übereinstimmt, und folgende Normen oder normative Dokumente zugrunde gelegt wurden:

en EU Declaration of Conformity. We declare under sole responsibility that this product complies with all the relevant requirements in the following EU Directives, and following standards and normative documents were applied:

fr Déclaration de conformité de l'UE. Nous déclarons, sous notre seule responsabilité, que ce produit satisfait à toutes les exigences pertinentes des directives UE suivantes et repose sur les normes ou documents normatifs suivants :

es Declaración UE de conformidad. Declaramos bajo nuestra responsabilidad que este producto cumple todos los requisitos relevantes de las siguientes directivas de la UE y que se han tomado como base las siguientes normas o documentos normativos:

it Dichiarazione di conformità UE. Dichiariamo sotto nostra unica responsabilità che il presente prodotto sia conforme a tutti i requisiti di rilevanza definiti dalle seguenti Direttive UE e che siano stati applicati le seguenti norme o i seguenti documenti normativi:

nl EU-conformiteitsverklaring. Wij verklaren en stellen ons ervoor verantwoordelijk dat dit product volledig voldoet aan alle volgende EU-richtlijnen en volgende normen of normatieve documenten daaraan ten grondslag gelegd werden:

sv EU-försäkran om överensstämmelse. Vi förklarar på eget ansvar att denna produkt uppfyller alla relevanta krav enligt följande EU-direktiv och baseras på följande normer eller normgivande dokument:

fi EU-vaatimusten mukaisuusvakuutus. Vakuutamme yksinomaisella vastuulla, että tämä tuote täyttää seuraavien EU-direktiivien kaikki olennaiset vaatimukset ja se on seuraavien standardien tai standardiasiakirjojen mukainen:

da EU-overensstemmelseserklæring. Vi erklærer med eneansvar, at dette produkt er i overensstemmelse med alle relevante krav i følgende EU-direktiver, og at følgende standarder eller normative dokumenter danner grundlag for det:

nb EU-samsvarserklæring. Vi erklærer under eneansvar at dette produktet oppfyller alle relevante krav i følgende EU-direktiver og at følgende standarder eller normative dokumenter er blitt lagt til grunn:

pt Declaração de conformidade UE. Sob nossa inteira responsabilidade, declaramos que este produto está de acordo com todas as exigências relevantes das seguintes diretivas UE, tendo sido tomadas por base as seguintes normas ou documentos normativos:

ru Декларация о соответствии ЕС. Мы со всей ответственностью заявляем, что данная продукция соответствует всем применимым требованиям следующих Директив ЕС, стандартов и нормативных документов:

cs Prohlášení o shodě EU. Prohlašujeme s veškerou odpovědností, že tento výrobek splňuje všechny příslušné požadavky následujících směrnic EU a že byly použity následující normy nebo normativní dokumenty:

pl Deklaracja zgodności UE. Niniejszym oświadczamy na własną odpowiedzialność, że produkt ten spełnia wszystkie obowiązujące wymogi następujących dyrektyw UE, norm lub dokumentów normatywnych.

2006/42/EC, 2014/30/EU, 2011/65/EU

EN 62841-1: 2015 + AC:2015

EN 62841-2-17:2017

EN 55014-1:2017, EN 55014-2:2015

EN IEC 61000-3-2:2019, EN 61000-3-3: 2013

EN IEC 63000:2018



Unterzeichnet für und im Namen von/
Signed on behalf of and in name of/
Signé pour et au nom de

Festool GmbH

Wertstr. 20, 73240 Wendlingen, GERMANY

Wendlingen, 2021-10-07

Markus Stark

Head of Product Development

Ralf Brandt

Head of Product Conformity

* im definierten Seriennummer-Bereich (S-Nr.) von 40000000 - 49999999

in the specified serial number range (S-Nr.) from 40000000 - 49999999

dans la plage de numéro de série (S-Nr.) de 40000000 - 49999999

Edge router

**Serial number ¹⁾
(T-Nr.)**

OFK 700 EQ

10488475

We as the manufacturer declare under our sole responsibility that this product(s) fulfill(s) all the relevant provisions of the following UK Regulations and are manufactured in accordance with the following designated standards:

S.I. 2008/1597

S.I. 2016/1091

S.I. 2012/3032

BS EN 62841-1:2015

BS EN 62841-2-17:2017

BS EN 55014-1:2017

BS EN 55014-2:2015

BS EN IEC 61000-3-2:2019

BS EN 61000-3-3:2013

BS EN IEC 63000:2018



Signed on behalf of and in name of

Festool GmbH

Wertstr. 20, 73240 Wendlingen, GERMANY

Place and date of declaration: Wendlingen, 07.10.2021

A handwritten signature in black ink, starting with 'ppa.' followed by a stylized signature.

Markus Stark

Head of Product Development

A handwritten signature in black ink, starting with 'i.v.' followed by a stylized signature.

Ralf Brandt









Head of Product Conformity

¹⁾ in the specified serial number range (S-Nr.) from 40000000 - 49999999

Contents

1	Symbols.....	13
2	Safety warnings.....	13
3	Intended use.....	14
4	Technical data.....	15
5	Parts of the device.....	15
6	Commissioning.....	15
7	Settings.....	15
8	Working with the electric power tool.....	16
9	Service and maintenance.....	17
10	Accessories.....	17
11	Environment.....	17
12	General information.....	17

1 Symbols


-  Warning of general danger
-  Warning of electric shock
-  Read the operating instructions and safety instructions.
-  Wear ear protection.
-  Wear protective gloves when changing tools!
-  Wear a dust mask.
-  Wear protective goggles.
-  Disconnecting the mains power cable
-  Connecting the mains power cable
-  Safety class II
-  Do not dispose of it with domestic waste.
-  CE marking: Confirms the conformity of the power tool with the European Community directives.
-  Tip or advice
-  Handling instruction



UKCA marking: The United Kingdom Conformity Assessed symbol is a marking for products being placed on the market in the United Kingdom. It is a manufacturer's indication that the product is in conformance with the relevant regulations in the UK.

2 Safety warnings

2.1 General power tool safety warnings

 **WARNING! Read all safety warnings, instructions, illustrations and specifications provided with this power tool.** Failure to follow all instructions listed below may result in electric shock, fire and/or serious injury.

Save all warnings and instructions for future reference.

The term "power tool" in the warnings refers to your mains-operated (corded) power tool or battery-operated (cordless) power tool.

2.2 Machine-specific safety notices

- **Hold the power tool by insulated gripping surfaces only, because the cutter may contact its own cord.** Cutting a "live" wire may make exposed metal parts of the power tool "live" and could give the operator an electric shock.
- **Use clamps or another practical way to secure and support the workpiece to a stable platform.** Holding the work by your hand or against the body leaves it unstable and may lead to loss of control.
- Do not clamp tools with an unsuitable shank diameter in the clamping collet.
- Operate power tool only with properly installed guide table and extraction hood
- **Only cutters provided by Festool for this purpose may be mounted on the power tool.** The use of other cutters is prohibited due to the increased risk of injury.
- Only use routers that meet standard EN 847-1. All Festool cutters meet these requirements.
- **The maximum rotational speed specified on the tool must not be exceeded or the rotational speed range must be observed.** Accessories that rotate faster than the permissible level can rupture.
- Do not work on the power tool if its electronics are defective as this may lead to excessive speeds. You can tell if the electronics are defective if there is no smooth start-

up, if it is not possible to regulate the speed and in the event of generation of smoke or the smell of burning from the machine.



Wear suitable personal protective equipment: Ear protection, safety goggles, a dust mask for work that generates dust.

- **Only for AS/NZS:** The tool shall always be supplied via residual current device with a rated residual current of 30 mA or less.

2.3 Router safety instructions

General

- Proceed with extreme care when unpacking, packing and handling the tool (e.g. installing it in the machine). There is a risk of injury from extremely sharp cutting edges!
- When handling the tool, wearing safety gloves provides a more secure hold of the tool and further reduces the risk of injury.
- Observe the safety warnings for your machine.
- Comply with the safety regulations that apply in your country.
- **WARNING!** Do not use tools with visible cracks or blunt or damaged cutting edges.

Installation and mounting

- Tools must be clamped in such a way that they cannot come loose during operation.
- Insert the routing tool into the collet as far as possible or at least up to the mark on the router shank.
- When assembling the tool, it must be ensured that the clamping takes place in the routing machine's collet and that the edges do not come into contact with one another or the fixed clamps.
- Clamping or fixing nuts must be tightened using suitable keys, etc. and with the torque specified by the manufacturer.
- Do not lengthen the key or tighten by hitting with a hammer.
- The clamping surfaces must be cleaned to remove contamination, grease, oil and water.
- Clamping screws must be tightened according to the manufacturer's instructions.

Service and maintenance

- Always use original Festool spare parts.
- Repairs and sanding work may only be carried out by experts.

- The tool design must not be changed.
- For repairs and sanding work, see the additional instructions at www.festool.com.
- Deresinify and clean the tool regularly (cleaning agent with pH between 4.5 and 8).
- Blunt edges can be resharpened on the clamping surface to a minimum cutting edge thickness of 1 mm.
- Only transport the tool in suitable packaging – risk of injury!

2.4 Emission levels

The levels determined in accordance with EN 62841 are typically:

Sound pressure level	$L_{PA} = 81 \text{ dB(A)}$
Sound power level	$L_{WA} = 92 \text{ dB(A)}$
Uncertainty	$K = 1,5 \text{ dB}$



CAUTION

**Noise generated when working
Risk of damage to hearing**

- Use ear protection.

Vibration emission level a_h (vector sum for three directions) and uncertainty K measured in accordance with EN 62841:

Auxiliary handle	$a_h < 2,5 \text{ m/s}^2$
	$K = 1,5 \text{ m/s}^2$

The specified emission levels (vibration, noise)

- are used to compare machines.
- They are also used for making preliminary estimates regarding vibration and noise load during operation.
- They represent the primary applications of the power tool.



CAUTION

The emission values may deviate from the specified values. This is dependent on how the tool is used and the type of workpiece being machined.

- The actual load during the entire operating cycle must be evaluated.
- Depending on the actual load, suitable protective measures must be defined in order to protect the operator.

3 Intended use

The edge router is designed for flush trimming and profile routing wood, plastic and similar materials.



The user is liable for improper or non-intended use.

3.1 Routing tools

Type of feed

MAN (manual feed).

Speed

The maximum speed specified on the tool must not be exceeded and the speed range must be adhered to.

Materials

Wood, plastics. Observe the material information on the packaging.

Only qualified and experienced persons who are familiar with the tools are permitted to use them.

4 Technical data

Edge router	OFK 700 EQ
Power	720 W
Speed	10,000– 26,000 rpm
Max. speed (no-load)	26,000 rpm
Tool holder dia.	6–8 mm
Max. routing diameter	26 mm
Connection dia. d/e	27 mm
Baseplate angle	1.5°
Weight as per EPTA procedure 01:2014:	2,2 kg

4.1 Routing tools

See imprint on the routing tool.

Cutters have been produced in compliance with EN 847-1:2017.

5 Parts of the device

- [1-1]** On/off switch
- [1-2]** Guide table
- [1-3]** Auxiliary handle
- [1-4]** Handle
- [1-5]** Speed adjusting wheel
- [1-6]** Plug-it connection

The specified illustrations appear at the beginning of the Operating Instructions.

6 Commissioning



WARNING

Unauthorised voltage or frequency.

Risk of accidents

- ▶ The mains voltage and the frequency of the power source must correspond to the specifications on the name plate.
- ▶ In North America, only Festool machines with the voltage specifications 120 V / 60 Hz may be used.



CAUTION

Heating of the plug it connection if bayonet fitting is not completely locked

Risk of burns

- ▶ Before switching on the power tool, make sure that the bayonet fitting at the mains cable is closed fully and locked.
- ▶ Connect and disconnect the mains power cable **[2]**.

6.1 Switching on/off

The switch **[1-1]** serves as an on/off switch (I = ON, 0 = OFF).

7 Settings



WARNING

Risk of injury, electric shock

- ▶ Always disconnect the mains plug from the socket before performing any work on the machine.

7.1 Electronics

Constant speed

The preselected motor speed is kept constant through electronic control. This ensures a uniform speed even when under load.

Speed control

You can use the adjusting wheel **[1-5]** to continuously adjust the speed within the speed range (see Section Technical data). This enables you to optimise the speed to suit the respective material. Please also note the specifications on the tools.

Scorch or melt marks on the material can be prevented through reducing the speed.

Restart protection

The built-in restart protection prevents the power tool from starting up again automatically

if the power is disconnected when the on/off switch is pressed. In this case, the power tool must be switched off and then switched back on again.

Due to the built-in restart protection, the power tool cannot be switched on and off via an external switch module.

7.2 Working position

Vertical working position [3A]+[9]

For flush trimming surface coatings and profile routing.

Horizontal working position [3B]+[8]

For flush trimming thin surface coatings (edge veneer) and profile routing.

Changing the working position [3]

- To convert the guide table [3-1], modify the sensor [3-2] and the extraction [3-3]+[4-1].

7.3 Dust extraction



WARNING

Health hazard posed by dust

- Always work with an extractor.
- Comply with national regulations.

An extraction hood [3-3]+[4-1] is supplied for both working positions. A Festool mobile dust extractor with a hose diameter of 6–8 mm can be connected to this.

The extraction hood [4-1] can be secured to the sheet metal [4-3] with both screws [4-2] in two positions (turned by 180°).

CAUTION! If an anti-static suction hose is not used, static charge may occur. The user may receive an electric shock and the electronics of the power tool may be damaged.

7.4 Changing routing tool



CAUTION

Risk of injury from hot and sharp insertion tool

- Do not use any blunt or faulty insertion tools.
- Wear protective gloves when handling an insertion tool.

See figure [5].

7.5 Replacing clamping collet

With the supplied clamping collet, only tools with a shaft diameter of 6–8 mm may be clamped.

See figure [6].

7.6 Setting the routing depth [7]

- ① Open the rotary knob.
- ② Set guide table [7-1] and follower roll [7-2] or contact spring [7-3] to the desired routing depth.
- ③ Close the rotary knob.

8 Working with the electric power tool



When working on the machine, observe all of the safety warnings that are listed at the start as well as the following rules:

- Only guide the power tool towards the workpiece when it is switched on.
- Hold the machine with two hands – one on the motor housing and one on the gear head or on the additional handle [1-3] – to ensure safe guidance.
- Ensure that the follower roll or contact spring does not touch the routing tool.
- **Wait until the power tool has come to a complete halt before placing it down.** The insertion tool can get caught and lead to a loss of control of the power tool.
- When routing, ensure that the power tool's feed direction is the same as the tool's cutting direction.

8.1 Routing

- Guide the power tool along the workpiece at an even feed rate. Guide table and follower roll or contact spring must always be flush with the workpiece (Image [8]+[9]).

Contact spring

For straight and rough workpiece edges.

Follower roll

For curved workpiece edges.

- ① So that the panel coating is not damaged when edge routing, the guide table supplied as standard is inclined by 1.5°. For exactly right-angled milling grooves, a guide table with 0° inclination is available as an accessory.

9 Service and maintenance



WARNING

Risk of injury, electric shock

- ▶ Always pull the mains plug from the socket before performing any servicing and maintenance work.
- ▶ All maintenance and repair work which requires the housing to be opened should always be carried out by an authorised service workshop.



Customer service and repairs must only be carried out by the manufacturer or service workshops. Find the nearest address at:

www.festool.co.uk/service



Always use original Festool spare parts. Order no. at:

www.festool.co.uk/service

- ▶ Damaged safety devices and components must be repaired or replaced in a recognised specialist workshop, unless otherwise indicated in the operating instructions.
- ▶ To ensure constant air circulation, always keep the cooling air openings in the motor housing clean and free of blockages.
- ▶ The tool is equipped with special self-disconnecting carbon brushes. If they wear out, the power supply is disconnected automatically and the tool stops.

10 Accessories

Always use original Festool tools and accessories. Using low-quality tools or accessories from other manufacturers may increase the risk of injury and seriously unbalance the machine, decreasing the quality of the working results and accelerating power tool wear.

Refer to the Festool catalogue for the order numbers of accessories and tools or find them online at www.festool.co.uk.

11 Environment



Do not dispose of the device in the household waste! Recycle devices, accessories and packaging. Observe applicable national regulations.

In accordance with the European Directive on waste electrical and electronic equipment and implementation in national law, used power

tools must be collected separately and handed in for environmentally friendly recycling.

Information about collection points for correct disposal is available at www.festool.co.uk/recycling.

Information on REACH: www.festool.co.uk/reach

12 General information

Imported into the UK by

Festool UK Ltd
1 Anglo Saxon Way
Bury St Edmunds
IP30 9XH
Great Britain