

Operating Instruction

— Belt and Disc sander

— BTS 150

— BTS 250



BTS 150

BTS-SERIES

Imprint

Product identification

Belt and disc sander	Item number
BTS 150	5904150
BTS 250	5904250

Manufacturer

Stürmer Maschinen GmbH
 Dr.-Robert-Pfleger-Str. 26
 D-96103 Hallstadt

Fax: 0049 (0) 951 96555-55
 E-Mail: info@holzstar.de
 Internet: www.holzstar.de

Indications regarding the operating instructions

Original Instruction

Edition: 04.03.2021
 Version: 3.06
 Language: English

Author: FL

Indications regarding the copyright

Copyright © 2021 Stürmer Maschinen GmbH, Hallstadt, Germany.

The contents of these operating instructions is the sole property of the company Stürmer Maschinen GmbH. Passing on as well as copying of this document, the use and distribution of its content are prohibited if not explicitly permitted. Contraventions are liable to compensation.

Subject to technical modifications and error.

Contents

1 Introduction	3
1.1 Copyright	3
1.2 Customer service.....	3
1.3 Limitation of liability.....	3
2 Safety	3
2.1 Symbol explanation	3
2.2 Obligations of the operating company	4
2.3 Qualification of personnel	5
2.4 Personal protective equipment	5
2.5 Safety signs on the Machine.....	6
2.6 Regulations for safety and accident prevention..	6
3 Intended Use	6
4 Technical Data	7
4.1 Type plate	7
5 Transport, packaging, storage.....	7
5.1 Delivery and transport.....	7
5.2 Packaging.....	8
5.3 Storage	8
6 Scope of delivery and Accessories	8
6.1 Scope of delivery	8
6.2 Accessories	8
7 Description of the device	9
8 Assembly	9
8.1 Safety stop.....	9
8.2 Working table.....	10
9 Settings.....	10
9.1 Pivoting worktable.....	10
9.2 Align the working table.....	10
9.3 Vertical grinding.....	11
9.4 Worktable in vertical grinding position	11
9.5 Grinding wheel change	11
9.6 Belt change.....	11
9.7 Sanding belt barrel.....	12
10 Operation of the machine.....	12
10.1 Surface grinding on the sanding belt	12
10.2 Edge grinding in vertical grinding position	13
10.3 Grinding bent workpieces	13
10.4 Grinding round parts on the grinding wheel... ..	13
10.5 Grinding ends on the grinding wheel	13
10.6 Connecting piece for extraction system.....	14
11 Notes for the grinding process.....	14
12 Care, maintenance and repair.....	14
12.1 Cleaning.....	14
12.2 Maintenance	15
13 Troubleshooting.....	16
14 Disposal instructions / recycling facilities.....	16
14.1 Decommission	16
14.2 Disposal of new equipment packaging	16
14.3 Disposal of electrical appliances.....	17
14.4 Disposal of lubricants.....	17
14.5 Disposal via municipal collection points.....	17
15 Spare parts	17
15.1 Ordering spare parts.....	17
16 Spare Parts Drawings	18
16.1 Spare Parts Drawing BTS 150.....	18
16.2 Spare parts Drawing BTS 250.....	19
17 EC-Declaration of Conformity	20

1 Introduction

You have made a good choice by purchasing the Belt and disc sander made by HOLZSTAR.

Thoroughly read the operating instructions before commissioning the machine.

It informs you about the proper commissioning, the intended use as well as the safe and efficient operation and maintenance of the Belt and disc sander.

The operating instructions are part of the Belt and disc sander. Always keep it at the place of use of the Belt and disc sander. Furthermore, the local accident prevention regulations and the general safety notes are applicable for the field of application of the Belt and disc sander. The illustrations in these operating instructions serve the general comprehension and may deviate from the actual type.

1.1 Copyright

The contents of these instructions are copyright. Their application is admissible in the frame of the device. An application beyond the described application is not allowed without written approval of the manufacturer. For the protection of our products, we shall register trademark, patent and design rights, as this is possible in individual cases. We strongly oppose any infringement of our intellectual property

1.2 Customer service

Please contact your dealer if you have questions on the machine or if you need technical advice. They will help you with specialist information and expert advice.

Stürmer Maschinen GmbH
Dr.-Robert-Pfleger-Str. 26
D-96103 Hallstadt

Repair service:

Fax: 0049 (0) 951 96 555 - 55
E-Mail: service@stuermer-maschinen.de

Spare part orders:

Fax: 0049 (0) 951 96555-119
E-Mail: ersatzteile@stuermer-maschinen.de

We are always interested in valuable experience and knowledge gained from using the application, which then could be shared and be valuable to develop our products even further.

1.3 Limitation of liability

All information and notes in these operating instructions were summarised taking the applicable standards and rules, the state-of-the-art and our long-term knowledge and experiences into consideration.

In the following cases the manufacturer is not liable for damages:

- Non-observance of the operating instructions,
- Inappropriate use
- Use of untrained staff,
- Unauthorised modifications
- Technical changes,
- Use of not allowed spare parts.

The actual scope of delivery may deviate from the explanations and presentations described here in case of special models, when using additional ordering options or due to latest technical modifications.

The obligations agreed in the delivery contract, the general terms and conditions as well as the delivery conditions of the manufacturer and the legal regulations at the time of the conclusion of the contract are applicable.

2 Safety

This paragraph will give you an overview of all important safety packages for the protection of the people using it well as for a safe and undisturbed operation. Other task-based safety notes are included in the individual chapters

2.1 Symbol explanation

Safety instructions

The safety notes in these operating instructions are highlighted by symbols. The safety notes are introduced by signal words which express the concern of the risk.



DANGER!

This combination of symbol and signal words indicates an imminently dangerous situation which may lead to death or severe injuries if they are not avoided.



WARNING!

This combination of symbol and signal word indicates a potentially dangerous situation that can lead to death or serious injury if not avoided.

**CAUTION!**

This combination of symbol and signal word indicates a potentially dangerous situation that can result in minor injury if it is not avoided.

**ATTENTION!**

This combination of symbol and signal words indicates a possibly dangerous situation which may lead to property and environmental damages if they are not avoided.

**NOTE!**

This combination of symbol and signal words indicates a possibly dangerous situation which may lead to property and environmental damages if they are not avoided.

Tips and recommendations**Tips and recommendations**

This symbol highlights useful tips and recommendations as well as information for an efficient and trouble-free operation.

It is necessary to observe the safety notes quoted in these operating instructions in order to reduce the risks for personal injuries and damages to property.

2.2 Obligations of the operating company

The operating company is the person who operates the machine for business or commercial reasons by herself, or leaves it to a third party for use or application, and who bears the legal product responsibility for the protection of the user, the staff or for third parties.

Obligations of the operating company:

If the machine is used for commercial purposes, the operating company must comply with the legal working safety regulations. Therefore, the safety notes in this operating manual, as well as the safety, accident prevention and environment protection regulations applying for the area of application of the machine must be met. The following applies in particular:

- The operating company must be informed about the applying industrial safety regulations and further analyse hazards resulting from the special working conditions at the place of use machine. She must implement these in form of operating manuals for the operation machine.
- During the entire lifetime of machine, the operating company must verify whether the operating manuals prepared by her correspond to the current status of the regulations, and must adapt these if necessary.
- The operating company must unambiguously regulate and determine the responsibilities for installation, operation, troubleshooting, maintenance and cleaning.
- The operating company must ensure that all persons who work with machine, have read and understood this manual. Furthermore she must instruct the staff in regular intervals and inform them about the hazards.
- The operator must provide the necessary protective equipment to the staff and order the use of the necessary protective equipment in a binding way.

Furthermore the operating company is responsible to keep the Machine always in a technically flawless state. Thus, the following applies:

- The operator must ensure that the maintenance intervals described in this manual are kept.
- The operator must have all safety devices checked regularly for their good working order and their integrity.

2.3 Qualification of personnel

The different tasks described in this manual represent different requirements to the qualification of the persons entrusted with these tasks.



WARNING!

Danger in case of insufficient qualification of the staff!!

Insufficiently qualified persons cannot estimate the risks while using machine and expose themselves and others to the danger of severe injuries.

- Have all works only performed by qualified persons.
- Keep insufficiently qualified persons and children out of the working area.

Only persons reliable working procedures can be expected from, are allowed to perform all works. Persons the responsiveness of which is affected by e. g. drugs, alcohol or medication, are not allowed to work with the machine.

The qualifications of the personnel for the different tasks are mentioned below:

Operator:

The operator is instructed by the operating company about the assigned tasks and possible risks in case of improper behaviour. Any tasks which need to be performed beyond the operation in the standard mode must only be performed by the operator if it is indicated in these instructions and if the operating company expressly commissioned the operator.

Electrical specialist:

Due to his professional training, knowledge and experience as well as his knowledge of respective standards and regulations the electrical specialist is able to perform works on the electrical system and to recognise and avoid any possible dangers himself.

Specialist staff:

Due to their professional training, knowledge and experience as well as their knowledge of relevant regulations the specialist staff is able to perform the assigned tasks and to recognise and avoid any possible dangers themselves.

Manufacturer:

Certain works may only be performed by specialist personnel of the manufacturer. Other personnel is not authorized to perform these works. Please contact our customer service for the execution of all arising work..

2.4 Personal protective equipment

The personal protective equipment serves to protect persons against impairments of safety and health while working. The staff has to wear personal protective equipment while performing different works on and with grinding system which are indicated in the individual paragraphs of these instructions.

The personal protective equipment is explained in the following paragraph:



Ear and head protection

The hearing protection protects the ears against damages of hearing due to noise. The industrial helmet protects the head against falling objects and bumping into fixed objects.



Eye protection

The protective goggles protect the eyes against parts flying off and splashes of liquids.



Breathing protection

The breathing protection serves for protecting the respiratory passages and the lung against the intake of dust particles.



Protective gloves

The protective gloves serve to protect the hands against sharp components as well as against friction, abrasions or deep injuries.



Safety boots

The safety boots protect the feet against crushes, falling parts and slipping over on slippery underground.



Protective clothes

The protective clothes are tight clothes of little tensile strength.

2.5 Safety signs on the Machine

The following safety signs and notes are applied on the grinding system (fig. 1), which need to be observed and followed..



Fig. 1: Safety labels

Damaged or missing safety symbols at the machine may lead to errors with personal and material damages. The safety symbols which are applied on the machine must not be removed. Damaged safety symbols must be replaced immediately. The machine must be put out of operation from the moment when the labels are unable to be recognized and understood at first glance, until new labels are attached.

2.6 Regulations for safety and accident prevention

The following instructions are to be followed by the operating personnel.

- The noise level (sound pressure level) of this machine may exceed 82 dB (A) at the workplace. In this case, sound and hearing protection measures are required and used by the operator.

Ear protection

Please wear ear protection when working with the device.

- Before operating the machine, read the operating instructions.
- Never touch rotating or moving parts.
- Always report electrical faults to an electrician.
- Always keep work clothes, long hair, jewelery etc. away from the machine.
- Switch off machine when work is interrupted.
- Wear suitable safety clothing (accident prevention shoes, safety glasses, etc.).
- Check safety devices for correct function before starting work.
- Read and understand safety instructions attached to the machine.
- Perform regular maintenance.
- Do not overload the machine.
- If the machine is not operating normally, the supervisor must be informed immediately.
- Caution is advised when people are in the work area.
- Never change the electrical system.
- Never remove mechanical or electrical safety devices.
- Special attention is needed during transport or reconstruction; The transport regulations must be followed.

3 Intended Use

The belt and disc sander is used exclusively for sanding wood and wood-like materials (wood fiber board, chip-board, plywood boards, laminated and non-laminated boards, etc.). Grinding other materials can result in fire, injury or damage. Please pay attention to the instructions in the operating instructions as well as the information signs on the machine. It must be connected to a suitable extraction system. The belt and disc sanding machine is suitable for private use, in schools, craft workshops, workshops and for home improvement, suitable, not for industrial use. Proper use also includes compliance with all information in this manual. Any use beyond the intended use or otherwise is considered misuse.



WARNING!

Risk of misuse!

Misuse of the belt and disc sander can lead to dangerous situations.

- Operate the belt and disc sander only in the power range specified in the technical data.
- Never bypass or override the safety devices.
- Never work on other materials than specified in the intended use.
- Only operate the belt and spindle grinder in a technically perfect condition.
- Never work on several workpieces at the same time.

Unauthorized modifications or changes to the belt and spindle grinder may void the CE conformity of the Machine and are prohibited.

The company Stürmer Maschinen GmbH assumes no liability for design and technical changes to the belt and spindle grinder.

The improper use of the belt and spindle grinder as well as the disregard of the safety regulations or the operating instructions exclude a liability of the manufacturer for resulting damage to persons or objects and will invalidate the guarantee!

4 Technical Data

Type	BTS 150	BTS 250
Current draw	400 W	800 W
Power output	250 W	560 W
Current consumption	2,0 A	3,8 A
Sanding belt size	915 x 100 mm	1220 x 150 mm
Speed of sanding belt	490 U/min	517 U/min
Suction Ø	58 mm	120 mm
Sanding pad Ø	150 mm	250 mm
Dimensions Table	230 x 150 mm	360 x 200 mm
Sanding unit swiveling	0 - 90°	0 - 90°
Table tilting	0 - 45°	0 - 45°
Dimensions	560 x 270 x 300 mm	720 x 410 x 440 mm
Weight	17 kg	47 kg
Item number	5904150	5904250

4.1 Type plate



Fig. 2: Type plate BTS 150

5 Transport, packaging, storage

5.1 Delivery and transport

Delivery

Check the Belt & disc sander machine for visible transport damage after delivery. If you discover any damage to the Belt & disc sander machine, immediately report it to the carrier or dealer.

Transport

Improper transport is accident-prone and can cause damage or malfunctions for which we do not grant any liability or guarantee.

Transport the scope of delivery secured against shifting or tilting with a sufficiently dimensioned industrial truck to the installation site.



WARNING!

Severe or fatal injuries may occur if parts of the machine tumble or fall down from the forklift truck, pallet truck or from the transport vehicle. Follow the instructions and information on the transport box.

Note the total weight of the machine. The weight of the machine is indicated in the "Technical data" of the machine. When the machine is unpacked, the weight of the machine can also be read on the rating plate.

Only use transport devices and load suspension gear that can hold the total weight of the machine.

**WARNING!**

The use of unstable lifting and load suspension equipment that might break under load can cause severe injuries or even death. Check that the lifting and load suspension gear has sufficient load-bearing capacity and that it is in perfect condition.

Observe the accident prevention regulations issued by your Employers Liability Insurance Association or other competent supervisory authority, responsible for your company.

Fasten the loads properly.

General risks during internal transport**WARNING: DANGER OF TIPPING**

The device may be lifted unsecured by a maximum of 2cm.

Employees must be outside the danger zone, the reach of loads.

Warn employees and, if necessary, advise employees of the hazard.

Devices may only be transported by authorized and qualified persons. Act responsibly during transport and always consider the consequences. Refrain from daring and risky actions.

Gradients and descents (e.g. driveways, ramps and the like) are particularly dangerous. If such passages are unavoidable, special caution is required.

Before starting the transport check the transport route for possible danger points, unevenness and disturbances as well as for sufficient strength and load capacity.

Danger points, unevenness and disturbance points must be inspected before transport. The removal of danger spots, disturbances and unevenness at the time of transport by other employees leads to considerable dangers.

Careful planning of internal transport is therefore essential.

5.2 Packaging

All used packaging materials and packaging aids of the grinding system are recyclable and generally need to be transported to the material recycling.

Crush the packaging material made of cardboard and supply it to the waste paper collection.

The films are made of polyethylene (PE) and the upholstery parts are made of polystyrene (PS). These materials have to be delivered to a recycling station of the responsible dumping company.

5.3 Storage

The belt and disc sander must be thoroughly cleaned before being stored in a dry, clean and frost-free environment. Cover the machine with a protective tarpaulin.

6 Scope of delivery and Accessories**6.1 Scope of delivery**

Check the machine immediately after delivery for transport damage and shortages. To do this, remove all individual parts from the box and compare them with the following list.

- Sanding belt grit 60
- Operating instructions
- Suction nozzle adapter 35 to 120mm
- Grinding wheel grit 80 (glued on)

6.2 Accessories

- Base
Item number: 5914250
- Abrasive sheet Ø250 K150, adhesive-backed
Item number: 5912515
- Abrasive sheet Ø250 K120, adhesive-backed
Artikelnummer: 5912512
- Abrasive sheet Ø250 K100, adhesive-backed
Item number: 5912510
- Abrasive sheet Ø250 K80, adhesive-backed
Item number: 5912508
- Abrasive sheet Ø250 K60, adhesive-backed
Item number: 5912506
- Velcro pad Ø250, self-adhesive
Item number: 5912501
- Sanding belt with paper backing 1219x150 K180
Item number: 5911218
- Sanding belt with paper backing 1219x150 K120
Item number: 5911212
- Sanding belt with paper backing 1219x150 K100
Item number: 5911210
- Abrasive belt with paper backing 1219x150 K80
Item number: 5911208
- Abrasive belt with paper backing 1219x150 K60
Item number: 5911206
- Angle stop
Item number: 5914251

7 Description of the device

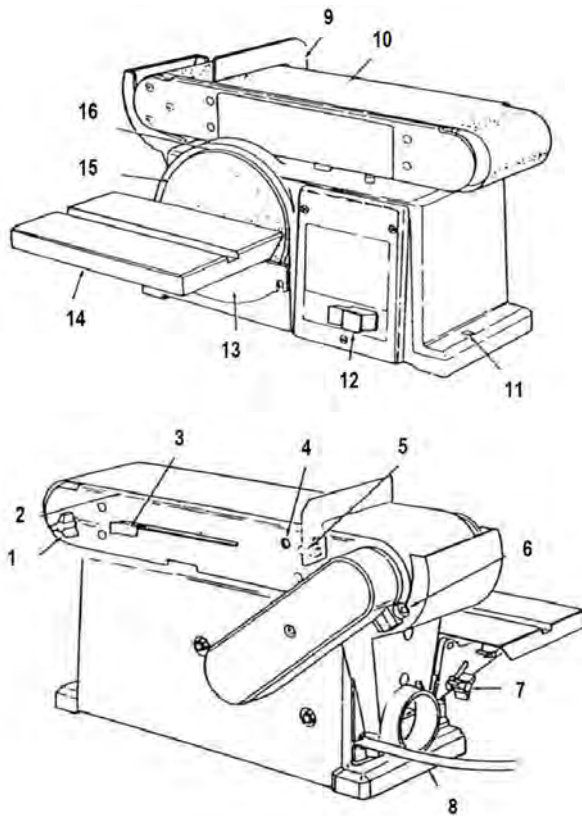


Fig. 3: Description

1. Track adjustment screw
2. Sanding belt board
3. Tensioning lever
4. Worktable - retaining hole
5. Mounting hole
6. Sanding unit - locking screw
7. Clamping screw - table swiveling
8. Machine foot
9. Safety stop
10. Grinding belt
11. Mounting hole
12. ON / OFF switch
13. Sanding plate protection
14. Worktable
15. Grinding wheel
16. Sanding pad

8 Assembly

Remove the machine from its packaging and remove all protective films. Make sure that the machine is not set up or put into operation in a damp or wet environment. The humidity should not exceed 60% and the measured room temperature should be between 0 ° C and 40 ° C.

For a safe footing, the machine should be mounted on a stable base (such as a workbench) using the holes provided in the machine base.

8.1 Safety stop

Take the safety stop as shown in Fig. 4 and fix it with the hexagon screw M6 x 1.0-14 and the toothed disc. When tightening the screw, make sure that you fasten the safety stop approx. 3 mm above the sanding belt. Do not overtighten the screw, otherwise it may over-tighten.

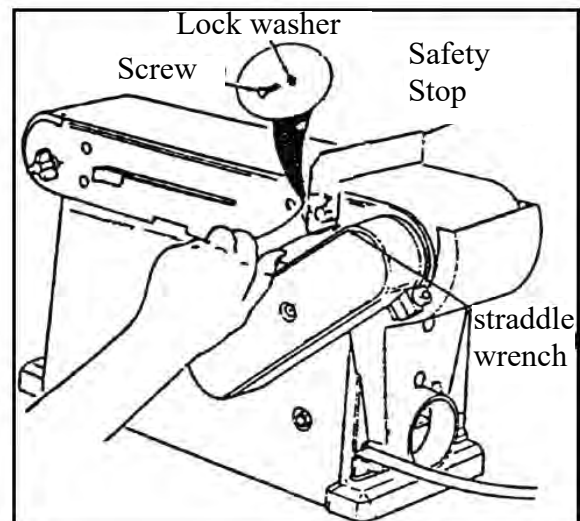


Fig. 4: Assembly the safety stop

8.2 Working table

Take the worktable as shown in Fig. 5 and attach it to the table support with 3 M6 x 1.0-14 hex bolts and washers.

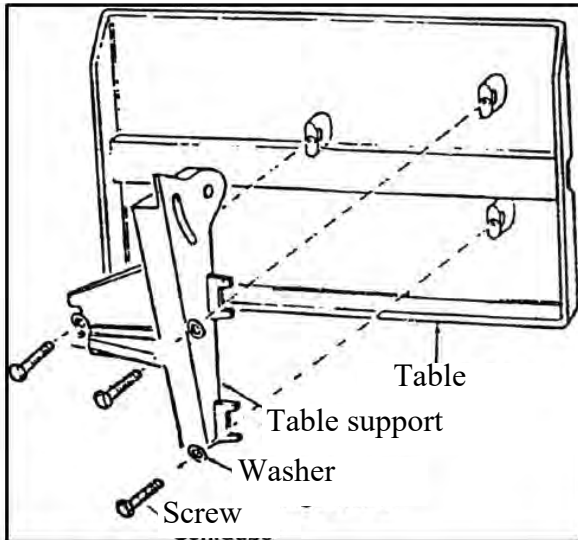


Fig. 5: Mount the table support

Then hold the preassembled worktable to the grinding machine as shown in Fig. 6 and fix it with the clamping screw and a washer. The edge of the table must be positioned with a maximum distance of 2 mm to avoid pinching workpieces or fingers between the table and the grinding wheel.

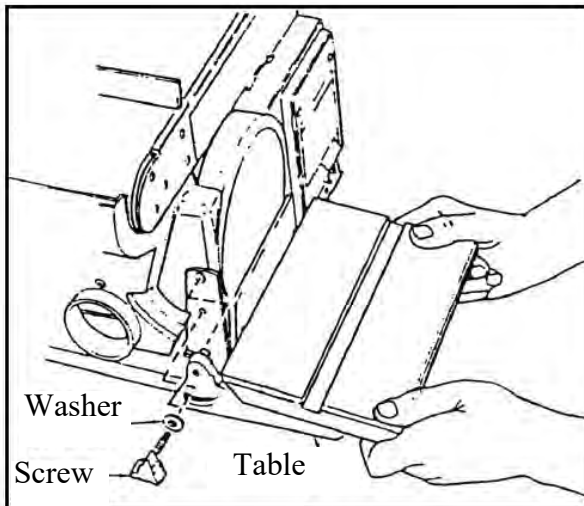


Fig. 6: Mount the work table

9 Settings



DANGER!

Before any intervention on the machine, it must be disconnected from the power supply. Handling and working with the machine is only permitted for persons who are familiar with the handling and operation of the machine.

9.1 Pivoting worktable

Loosen the clamping screw and bring the work table into the desired position. Then tighten the clamping screw again.

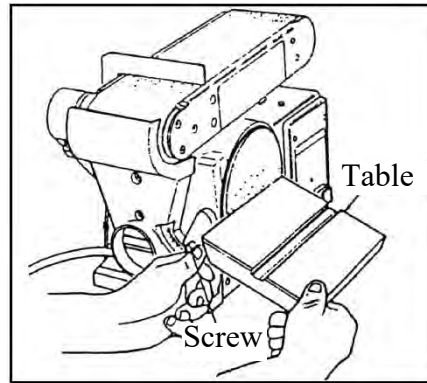


Fig. 7: Pivoting worktable

9.2 Align the working table

To align the work table exactly at 90°, make a right angle and hold it to the table as shown in Fig. 8. Then loosen the table pivot clamping screw and align the table. Finally tighten the clamping screw again.

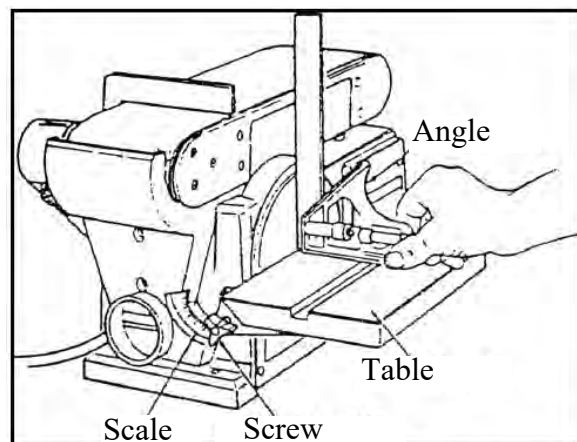


Fig. 8: Align the work table



NOTE!

This process can be repeated to align the work table on the sanding belt device in the vertical position.

9.3 Vertical grinding

To do this, loosen the locking screw with the Allen key. Bring the sanding unit to the desired position and retighten the locking screw.

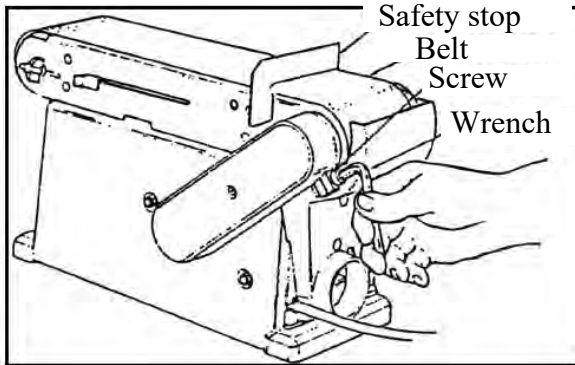


Fig. 9: Vertical grinding

9.4 Worktable in vertical grinding position

For grinding on the sanding belt in vertical position the work table can be mounted on the sanding unit. To do this, remove the safety stop. Bring the sanding unit into the vertical position as described. Now mount the worktable on the fixing holes of the safety stop.

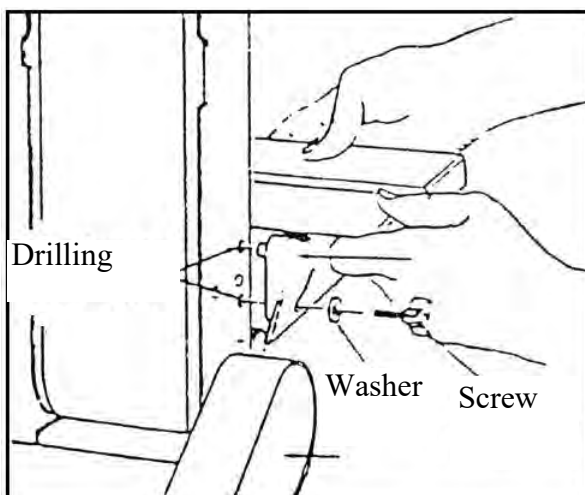


Fig. 10: Vertical grinding position

9.5 Grinding wheel change

Disassemble the work table. Loosen the two screws of the sanding guard and remove it. Replace the grinding wheel with a new one and then attach the sanding guard.

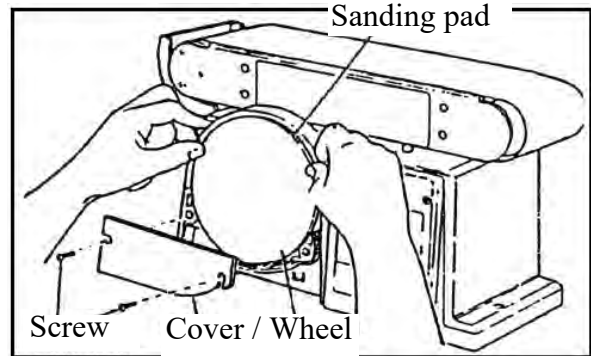


Fig. 11: Grinding wheel change

9.6 Belt change

To do this, loosen the tension of the sanding belt over the tensioning lever. Now carefully pull off the old sanding belt. Pull on the new sanding belt and align it. Finally tighten the sanding belt over the tension lever.



NOTE!

For easier replacement of the sanding belt, the sanding unit can easily be swiveled upwards. To lift and remove the sanding belt, move it back and forth.

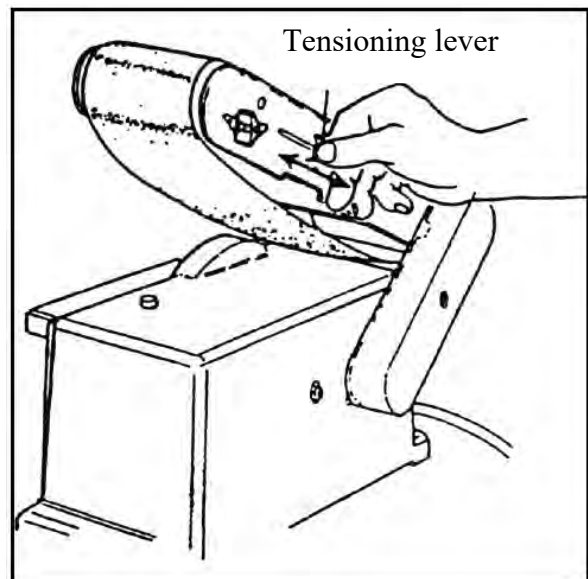


Fig. 12: Belt change

9.7 Sanding belt barrel

The run of the sanding belt can be changed via the track adjustment screw. When the sanding belt moves toward the grinding wheel, turn the adjusting screw clockwise. When the sanding belt moves away from the sanding wheel, turn the adjusting screw counterclockwise. Then move the sanding belt by hand in one direction and check the barrel. Change the run again if necessary.

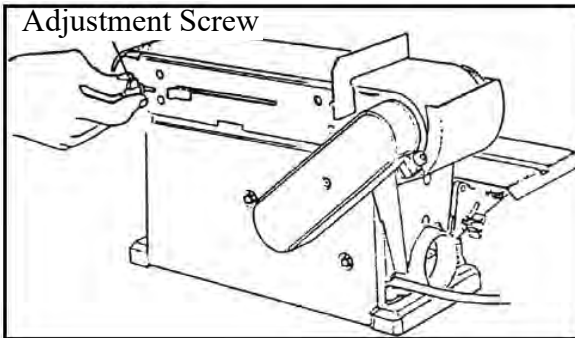


Fig. 13: Sanding belt barrel

10 Operation of the machine

Please observe the following working instructions so that your work has the expected success.



DANGER!

Certain types of wood and wood products produce harmful dust emissions when processed. Therefore, only use your machine in a well-ventilated area, use a suction device and wear respiratory protection.



DANGER!

Rotating parts! Get to work with reason. Pay attention to what you do. Pay special attention to the rotating parts. Wear tight-fitting clothing. Make sure that hair or clothing is not caught by rotating parts! Wear a hairnet.

When working with the machine no jewelry may be worn.



DANGER!

Flying chips and parts to be thrown off! Be sure to wear eye protection! Protect your eyes from flying chips and other splinters.



Wear safety glasses



Wear a dust mask

Before each start of work the following tests have to be carried out: Check all cables and plugs.

- Check if the worktable is tight.
- Note that there are different grits of the sanding plates for different jobs.
- Before starting the machine, make sure that the washer and the sanding belt rotate freely and are not braked or blocked by any workpieces.
- Lubricate regularly according to point maintenance.
- Prior to commissioning, the center run of the sanding belt must always be checked by manual feed!

ON / OFF Switch

To turn on the machine, press the green switch with the sign (I) for about one second. To switch off the machine, press the switch with the symbol (O), as shown in Fig. 14.



Fig. 14: ON / OFF Switch

10.1 Surface grinding on the sanding belt

Check that the safety stop is correctly installed and tightened. Gently press the workpiece against the sanding belt and safety stop as shown in Fig.15 with both hands. For better material removal, the workpiece can be easily moved back and forth.



DANGER!

Do not work with too much pressure, otherwise The sanding belt wears too fast. Bring Do not keep your fingers in contact with the sanding belt.

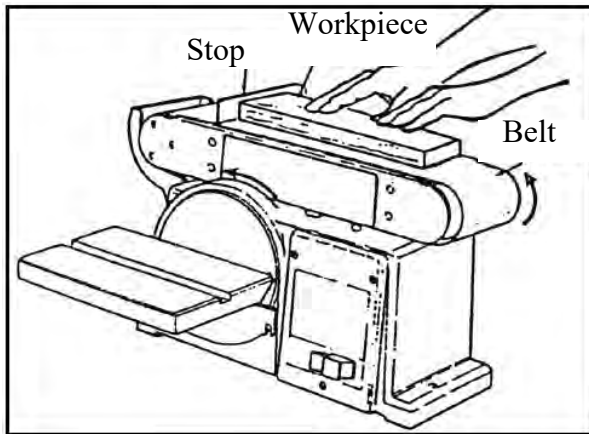


Fig. 15: Sand surfaces

10.2 Edge grinding in vertical grinding position

Bring the sanding unit in a vertical position as described and mount the working table. Hold the workpiece firmly with both hands and apply light pressure to the sanding belt. Move the workpiece slightly back and forth.

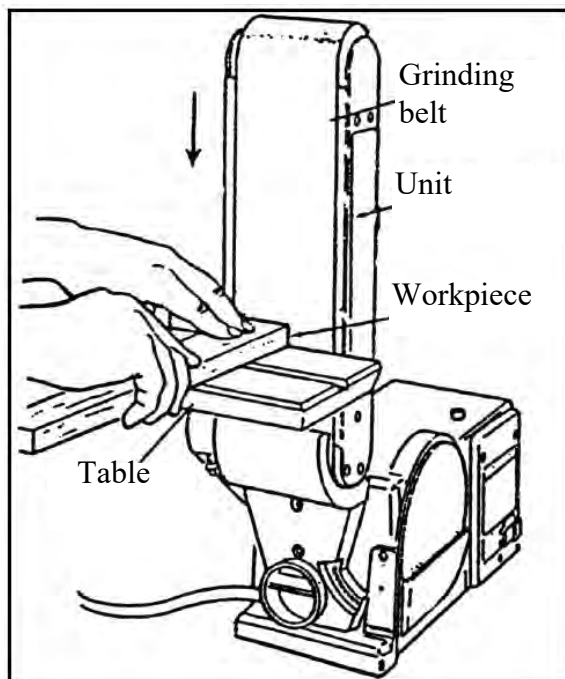


Fig. 16: Edge grinding

10.3 Grinding bent workpieces

Hold the workpiece firmly with both hands and proceed as shown in Fig.17. Grind inner curves only at the front pulley.

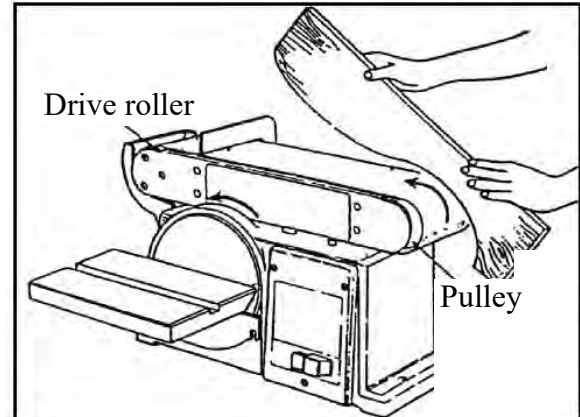


Fig. 17: Grinding bent workpieces

10.4 Grinding round parts on the grinding wheel

Hold the workpiece firmly with both hands and proceed as shown in Fig.17.



DANGER!

Always grind round parts only on the left side, down side of the grinding wheel, otherwise the workpiece can be thrown away.

10.5 Grinding ends on the grinding wheel

When grinding the ends of a narrow workpiece, it is easier to use the grinding wheel with the miter fence as shown in Fig.18. Move the workpiece outward from the center to the left side of the disc.



DANGER!

Always sand on the left side of the grinding wheel, as shown. The grinding on the right side of the grinding wheel can cause the workpiece to be thrown upwards.

The edge of the worktable must be positioned so that there is a maximum distance of 2 mm to the grinding wheel to avoid pinching workpieces or fingers between the table and the grinding wheel.

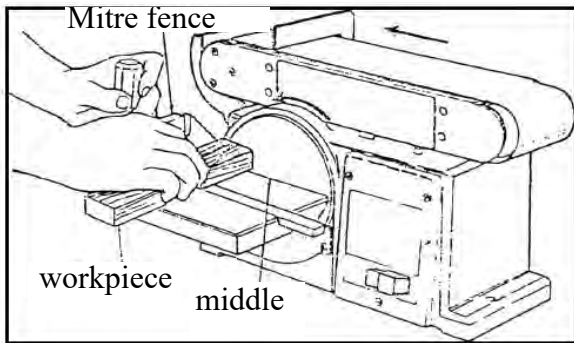


Fig. 18: Grinding ends

10.6 Connecting piece for extraction system

On the right side under the worktable there is a connection piece with 58 mm Ø for BTS 150 and 120 mm Ø for BTS 250 for connection to an extraction system.

11 Notes for the grinding process

When grinding, pay attention to the safety instructions and use the protective devices on the machine as well as your personal protective equipment (protective goggles, ear protection, safety shoes, etc.).

Special reference to situations that could cause damage to persons, the machine and / or the environment or could lead to financial losses:

- When grinding with the material, do not press too hard against the sanding pad.
- Make sure that the gap between the work table and the grinding wheel is not too large. Especially with thin workpieces there is a risk that the workpiece will enter the gap!
- Since the machine has no clamping facility, it is important that your workpiece is resting on the work table over the entire surface and can be held fast!
- Make sure the grinding wheel is in good condition and replace used grinding wheels in good time. Only with perfect tools you can achieve a good grinding quality!

12 Care, maintenance and repair

Always disconnect the machine from the power supply before starting any cleaning, maintenance or servicing work!

12.1 Cleaning

Basically, the machine should be cleaned after each use. When the machine is off, remove the chips and dust with a broom or brush.



DANGER!

Do not remove the chips with bare hands. There is a risk of cuts due to chips and tools!



NOTE!

Oil, grease and cleaning agents are hazardous to the environment and must not be dumped into wastewater or normal household waste. Dispose of these funds in an environmentally friendly way. The cloths soaked in oil, grease or detergent are easily flammable. Collect the cleaning rags or cleaning wool in a suitable, closed container and dispose of them in an environmentally friendly way - do not throw in household waste!

Maintenance and repair work may only be carried out by qualified personnel. If the belt and disc sander does not work properly, contact a dealer or our customer service. The contact details can be found in chapter 1.2 Customer Service. All protection and safety equipment must be reinstalled immediately after completion of repair and maintenance work.



NOTE!

- Check the grinding belt or the grinding sleeves regularly for errors. Replace a damaged sanding belt or sanding sleeve immediately.
- Check the correct setting of the tape guide at regular intervals. Relax the sanding belt during longer work breaks. Clean the machine at regular intervals.
- Check the adequate function of the extraction daily.
- Replace damaged safety equipment immediately.
- Connections and repairs of the electrical equipment may only be carried out by a qualified electrician.

Functional test

The belt and disc sanding machine is delivered ready to use. Before each use, a functional test should be carried out. The sanding belt must be tensioned.

Step 1: Manually move the sanding belt, making sure it is centered on the roller. If necessary, readjust the sanding belt with the ribbon adjustment screw.

Step 2: Switch on the belt and disk sanding machine for a short time and check the tape again.

Step 3: Switch off the belt and disk sanding machine again.

Sanding belt

The abrasive belt is a wearing part, which has to be regularly checked for faults and replaced when worn.

Replace a damaged abrasive belt immediately!

The belt is equipped with an automatic tensioning mechanism. This eliminates a regular tensioning of the tape.

Tape guide

Check the tape guide at regular intervals for the correct setting. If the belt and disk sanding machine is not used for a long time, the sanding belt must be relaxed.

Suction

Check the suction daily for its adequate function. If the extraction system does not work or only to a limited extent, it must be repaired again. Only then may the belt and disk grinding machine be put into operation.

Lubricate moving parts



Wear safety glasses!

Lubricate the bearing points of the pulleys periodically with a high-quality oil, but at the latest close to about 10 operating hours. Loosen the grinding tension and put 2 drops of oil in the intended opening (see Fig. 19). Do not use too much oil, otherwise the V-belt may slip or oil may get onto the workpiece. Then tension the sanding belt again and adjust the run.

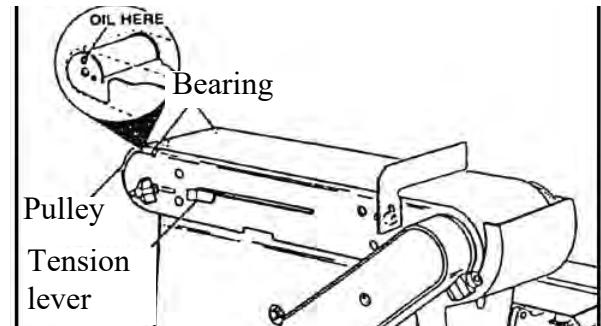


Fig. 19: Maintenance

12.2 Maintenance

Change the Strap

Disconnect the machine before starting any cleaning, maintenance or servicing work. Always from the power supply! Remove the belt housing cover by loosening the Phillips head screw. Loosen the three mounting screws, which relaxes the belt. Put the new belt on and tighten it by inserting a flat-head screwdriver into the auxiliary hole and pushing the belt housing upwards. Tighten the fastening screws again.

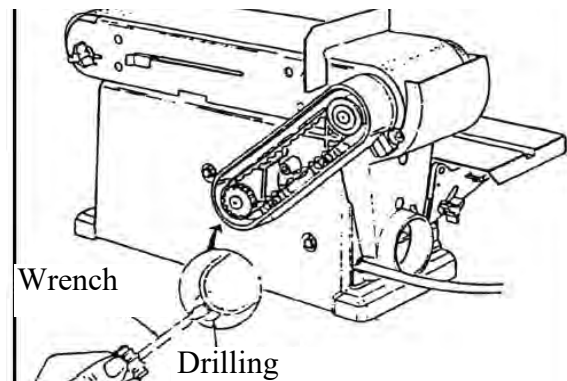
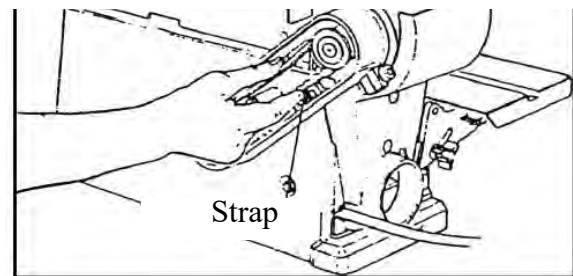


Fig. 20: Change the strap

13 Troubleshooting

Fault	Possible causes	Disposal
Engine is not running	Damaged ON / OFF switch Damaged ON / OFF switch lead Relay damaged Engine defective Fuses defective	Have the machine checked by an electrician and replace the damaged parts
Machine slows down while working	It is worked with too much pressure	Apply less pressure on the workpiece
Low service life of the abrasives	Abrasive (tape or disk) with too fine grain	Use a grinding wheel with coarse grain
Grinding angle does not fit	Adjusted angles on the work table or on the stop bracket do not fit	Check angle and adjust if necessary
Bad sanding picture	Abrasive with too coarse grain	Use finer grained abrasive
Grinding wheel runs optically out of round	Sanding belt not laid correctly	Trace the track of the sanding belt
Grinding wheel runs off the drive pulleys	Sanding belt not laid correctly	Trace the track of the sanding belt
Wood burns during grinding	Grinding sleeve or abrasive belt is coated with lubricant. There is too much pressure on the workpiece	Replace the sanding sleeve or sanding belt. Reduce the pressure on the workpiece.

14 Disposal instructions / recycling facilities

Dispose of your device in an environmentally friendly, by not disposing of waste in the environment but professionally.

Please take the packaging and later the old appliance does not just go away, but discard them in accordance with the relevant of your city / municipality or by the waste disposal company established guidelines.

14.1 Decommission

Discarded appliances are immediately professionally decommission, in order to avoid any later misuse and the threat to the environment or people.

- Step 1: Remove all environmentally hazardous materials from the old device.
- Step 2: Remove the machine optionally into manageable and actionable assemblies and components.
- Step 3: Leading the machine components and supplies the appropriate disposal routes.

14.2 Disposal of new equipment packaging

All used packaging materials and packaging aids of the machine are recyclable and must always be recycled.

The packaging wood can be sent for disposal or recycling.

Packaging components made of cardboard can be crushed for waste paper collection.

The foils are made of polyethylene (PE) or the upholstery parts made of polystyrene (PS). These substances can be reused after processing if they are passed on to a recycling center or to the disposal company responsible for them.

Only pass on the packaging material in such a way that it can be directly recycled.

14.3 Disposal of electrical appliances



NOTE!

Please take care in your interest and in the interest of the environment that all components of the machine are disposed according to the rules.

Please note that electrical units contain a variety of recyclable materials and environmentally harmful components.

Please contribute that these components are separated and disposed of properly. If in doubt, contact your municipal waste.

For preparation for commissioning please contact a company specialized for disposal.

14.4 Disposal of lubricants



DANGER!

Please pay attention to an environmentally friendly disposal of the used lubricants. Observe the disposal instructions of your municipal disposal companies.

The disposal instructions for the lubricants used are provided by the lubricant manufacturer. If necessary, ask for the product-specific data sheets.

14.5 Disposal via municipal collection points

Disposal of used electrical and electronic equipment (Applicable in the countries of the European Union and other European countries with a separate collection system for these appliances).



The symbol on the product or its packaging indicates that this product should not be treated as normal household waste but must be returned to a collection point for the recycling of electrical and electronic equipment. By helping to properly dispose of this product, you are protecting the environment and health of others. Environment and health are at risk from improper disposal. Material recycling helps reduce the consumption of raw materials. For more information on recycling this product, contact your local community, municipal waste disposal service or the shop where you purchased the product.

15 Spare parts



DANGER!

Danger of injury by the use of wrong spare parts!

Dangers may result for the user and damages as well as malfunctions may be caused by using wrong or damaged spare parts.

- Only use original spare parts of the manufacturer or spare parts admitted by the manufacturer.
- Always contact the manufacturer in case of uncertainties.



Tips and recommendations

Using non-approved spare parts voids the manufacturer's warranty.

15.1 Ordering spare parts

The spare parts may be purchased with the authorised dealer or directly with the manufacturer. Please find the corresponding contact data in Chapter 1.2 Customer service. Indicate the following basic information for spare part orders:

- Type of device
- Serial number
- Quantity
- Designation
- Required mode of dispatch (mail, freight, sea, air, express)
- Address of dispatch

Spare part orders which do not include the above indications may not be taken into consideration. If the indications regarding the mode of dispatch are missing, the product is dispatched at the discretion of the supplier. Information on the device type, item number and year of manufacture can be found on the nameplate, which is attached to the unit.

Example

The engine for the Belt and disc sander BTS 250 must be ordered. The engine has the number 47 in the spare parts drawing 1. By ordering spare parts, send a copy of the spare parts drawing (1) with the marked part (engine) and marked position number (47) to the dealer or spare parts department and provide the following information:

- Type of device: **Belt and disc sander
BTS 250**
- Item number: **5904250**
- Drawing number: **1**
- Position number: **47**

16 Spare Parts Drawings

The following drawings is intended to help in case of service, to identify necessary spare parts. To order send a copy of the parts drawing with marked components to your dealer.

16.1 Spare Parts Drawing BTS 150

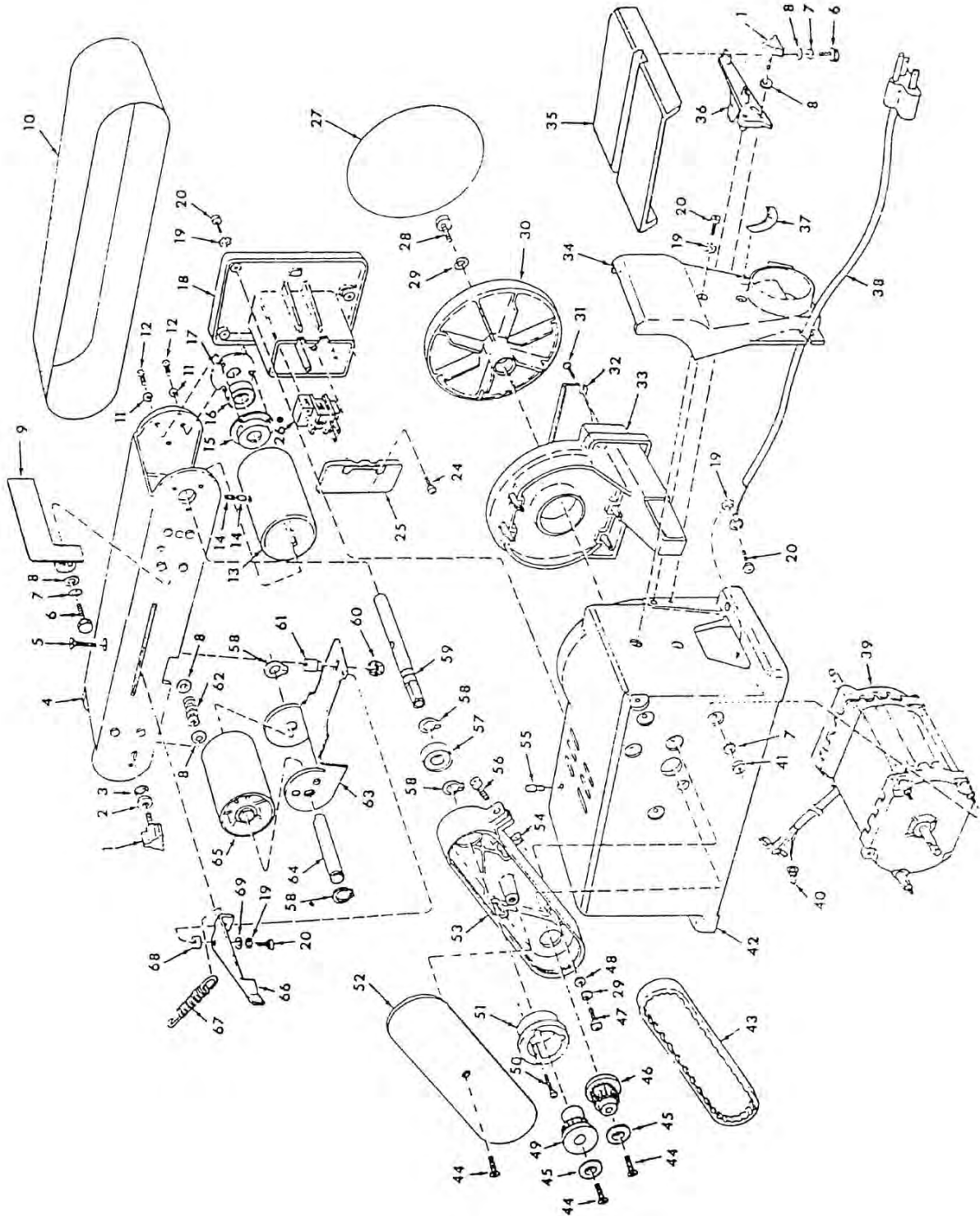


Fig. 21: Spare parts Drawing BTS 150

16.2 Spare parts Drawing BTS 250

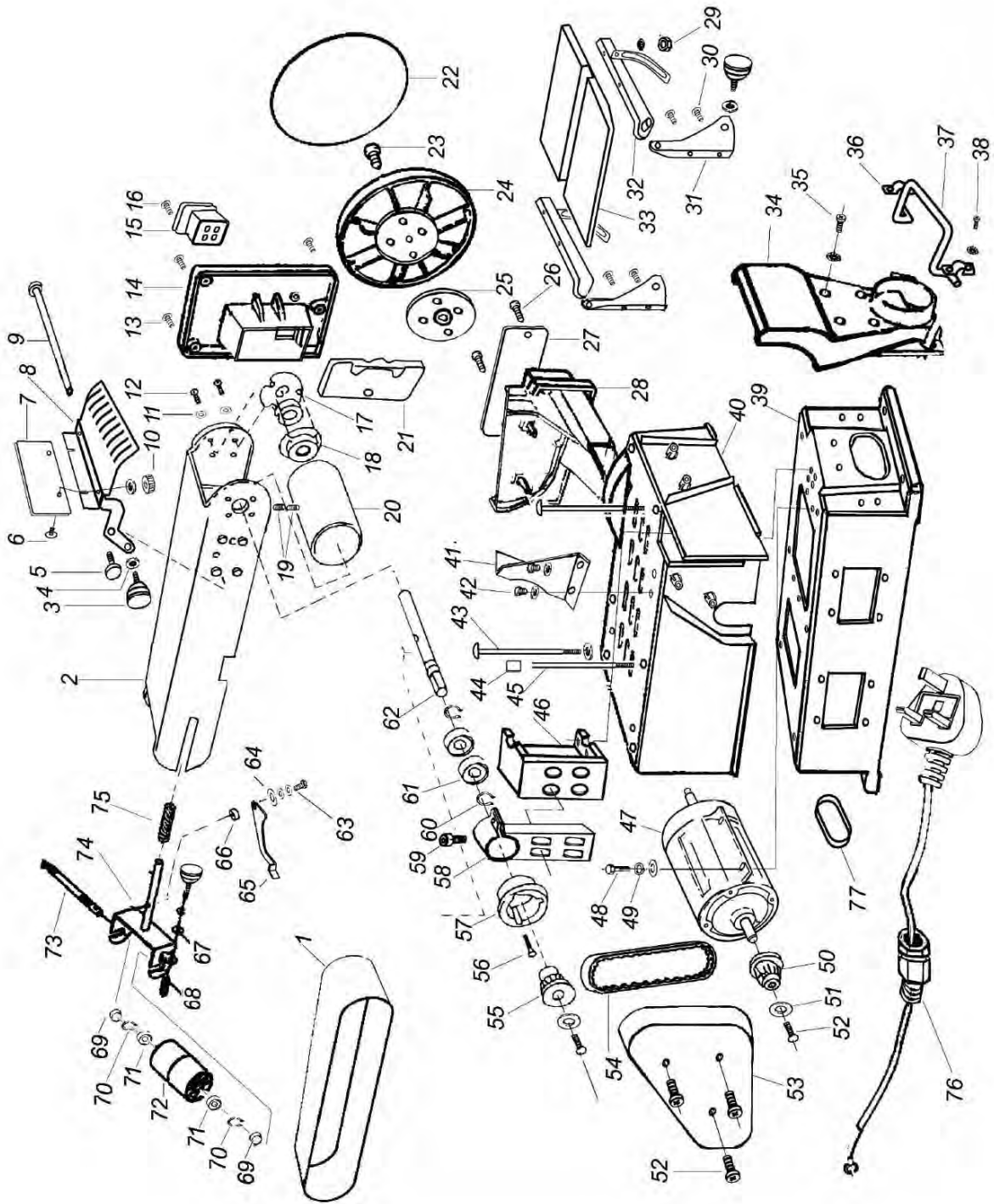


Fig. 22: Spare parts Drawing BTS 250

17 EC-Declaration of Conformity

According to Machinery Directive 2006/42/EC Annex II 1.A

Manufacturer / distributor: Stürmer Maschinen GmbH
Dr.-Robert-Pfleger-Str. 26
D-96103 Hallstadt

hereby declares that the following product

Product Group: Holzstar® Woodworking machines

Machine type : Belt and disc sander

Designation of the machine *: BTS 150 **Item number *:** 5904150
 BTS 250 5904250

Serial number*: _____

Year of manufacture*: 20____

* please fill in according to the information on the type plate

corresponds to all the relevant provisions of the abovementioned Directive and other Directives applied (below) - including their amendments current at the time of the declaration.

Relevant EU Directive : 2014/30/EU EMC-Directive

The following harmonized standards were applied:

DIN EN 60204-1:2019-06 Safety of machinery - Electrical equipment of machines - Part 1: General requirements

DIN ISO 12100 -1:2011-03 Safety of machinery. General principles for design Risk assessment and risk reduction (ISO 12100:2010)

Responsible for documentation: Kilian Stürmer, Dr.-Robert-Pfleger-Str. 26, D-96103 Hallstadt

Hallstadt, 04.03.2021

Kilian Stürmer
Manager



18 Notes

