

Instruction Manual

— Edge milling machine

— KSO 1500 F



KSO 1500 F

KSO 1500 F

Imprint

Product identification

Edge milling machine	Item number
KSO 1500 F	5901500

Manufacturer

Stürmer Maschinen GmbH
 Dr.-Robert-Pfleger-Str. 26
 D-96103 Hallstadt

Fax: 0049 (0) 951 96555-55

E-Mail: info@holzstar.de
 Internet: www.holzstar.de

Indications regarding the operating instructions

Original instructions

Edition: 21.04.2021
 Version: 2.04
 Language: English

Author: MS/ES/FL

Indications regarding the Copyright

Copyright © 2021 Stürmer Maschinen GmbH, Hallstadt, Germany.

The contents of these operating instructions is the sole property of the company Stürmer Maschinen GmbH. Passing on as well as copying of this document, the use and distribution of its content are prohibited if not explicitly permitted. Contraventions are liable to compensation.

Subject to technical modifications and error.

Contents

1 Introduction	3
1.1 Copyright	3
1.2 Customer service	3
1.3 Limitation of liability	3
2 Safety	3
2.1 Symbol explanation	3
2.2 Obligations of the operating company	4
2.3 Qualification of personnel	4
2.4 Personal protective equipment	5
2.5 Safety signs on the Machine	5
2.6 Safety data sheets	5
2.7 Safety devices	5
3 Intended Use	6
4 Technical Data	6
4.1 Type plate	6
5 Transport, Packaging, Storage	7
5.1 Delivery and Transport	7
5.2 Packaging	7
5.3 Storage	8
6 Description of the machine	8
7 Setting up and connection	8
7.1 Requirements for the installation site	8
7.2 Set up the Edge milling machine	8
7.3 Electrical connection	9
7.4 Mount or change the sanding belt	9
7.5 Adjusting the table height	10
7.6 Angle adjustment of the sanding belt	10
8 Operation of the Edge milling machine ..	10
9 Care, maintenance and repair	11
9.1 Care after the end of work	11
9.2 Maintenance and repair	12
10 Troubleshooting	13
11 Disposal instructions / recycling facilities	13
11.1 Decommission	13
11.2 Disposal of electrical equipment	13
11.3 Disposal of lubricants	13
11.4 Disposal via municipal collection points	13
12 Spare parts	14
12.1 Ordering spare parts	14
12.2 Spare parts drawings KSO 1500 F	15
13 Electrical schematic	18
14 EC-Declaration of Conformity	19

1 Introduction

You have made a good choice by purchasing the Edge milling machine made by HOLZSTAR.

Thoroughly read the operating instructions before commissioning the machine.

It informs you about the proper commissioning, the intended use as well as the safe and efficient operation and maintenance of the Edge milling machine.

The operating instructions are part of the Edge milling machine. Always keep it at the place of use of the Edge milling machine. Furthermore, the local accident prevention regulations and the general safety notes are applicable for the field of application of the Edge milling machine.

The illustrations in these operating instructions serve the general comprehension and may deviate from the actual type.

1.1 Copyright

The contents of these instructions are copyright. Their application is admissible in the frame of the device. An application beyond the described application is not allowed without written approval of the manufacturer. For the protection of our products, we shall register trademark, patent and design rights, as this is possible in individual cases. We strongly oppose any infringement of our intellectual property.

1.2 Customer service

Please contact your dealer if you have questions on the machine or if you need technical advice. They will help you with specialist information and expert advice.

Stürmer Maschinen GmbH
Dr.-Robert-Pfleger-Str. 26
D-96103 Hallstadt

Repair service:

Fax: 0049 (0)951 96555-111
E-Mail: service@stuermer-maschinen.de

Spare part orders:

Fax: 0049 (0)951 96555-119
E-Mail: ersatzteile@stuermer-maschinen.de

We are always interested in valuable experience and knowledge gained from using the application, which then could be shared and be valuable to develop our products even further.

1.3 Limitation of liability

All information and notes in these operating instructions were summarised taking the applicable standards and rules, the state-of-the-art and our long-term knowledge and experiences into consideration.

In the following cases the manufacturer is not liable for damages:

- Non-observance of the operating instructions,
- Inappropriate use
- Use of untrained staff,
- Unauthorised modifications
- Technical changes,
- Use of not allowed spare parts.

The actual scope of delivery may deviate from the explanations and presentations described here in case of special models, when using additional ordering options or due to latest technical modifications.

The obligations agreed in the delivery contract, the general terms and conditions as well as the delivery conditions of the manufacturer and the legal regulations at the time of the conclusion of the contract are applicable.

2 Safety

This paragraph will give you an overview of all important safety packages for the protection of the people using it well as for a safe and undisturbed operation. Other task-based safety notes are included in the individual chapters.

2.1 Symbol explanation

Safety instructions

The safety notes in these operating instructions are highlighted by symbols. The safety notes are introduced by signal words which express the concern of the risk.



DANGER!

This combination of symbol and signal words indicates an imminently dangerous situation which may lead to death or severe injuries if they are not avoided.



WARNING!

This combination of symbol and signal word indicates a potentially dangerous situation that can lead to death or serious injury if not avoided.



CAUTION!

This combination of symbol and signal word indicates a potentially dangerous situation that can result in minor injury if it is not avoided.



NOTE!

This combination of symbol and signal words indicates a possibly dangerous situation which may lead to property and environmental damages if they are not avoided.

Tips and recommendations



Tips and recommendations

This symbol highlights useful tips and recommendations as well as information for an efficient and trouble-free operation.

It is necessary to observe the safety notes quoted in these operating instructions in order to reduce the risks for personal injuries and damages to property.

2.2 Obligations of the operating company

The operating company is the person who operates the machine for business or commercial reasons by herself, or leaves it to a third party for use or application, and who bears the legal product responsibility for the protection of the user, the staff or for third parties.

Obligations of the operating company:

If the machine is used for commercial purposes, the operating company must comply with the legal working safety regulations. Therefore, the safety notes in this operating manual, as well as the safety, accident prevention and environment protection regulations applying for the area of application of the machine must be met. The following applies in particular:

- The operating company must be informed about the applying industrial safety regulations and further analyse hazards resulting from the special working conditions at the place of use machine. She must implement these in form of operating manuals for the operation machine.
- During the entire lifetime of machine, the operating company must verify whether the operating manuals prepared by her correspond to the current status of the regulations, and must adapt these if necessary.

- The operating company must unambiguously regulate and determine the responsibilities for installation, operation, troubleshooting, maintenance and cleaning.
- The operating company must ensure that all persons who work with machine, have read and understood this manual. Furthermore she must instruct the staff in regular intervals and inform them about the hazards.
- The operator must provide the personnel with the necessary protective equipment and bind the wearing of necessary protective equipment.

Furthermore the operating company is responsible to keep the Machine always in a technically flawless state. Thus, the following applies:

- The operator must ensure that the maintenance intervals described in this manual are kept.
- The operator must have all safety devices checked regularly for their good working order and their integrity.

2.3 Qualification of personnel

The different tasks described in this manual represent different requirements to the qualification of the persons entrusted with these tasks.



WARNING!

Danger in case of insufficient qualification of the staff!

Insufficiently qualified persons cannot estimate the risks while using machine and expose themselves and others to the danger of severe injuries.

- Have all works only performed by qualified persons.
- Keep insufficiently qualified persons and children out of the working area.

Only persons reliable working procedures can be expected from, are allowed to perform all works. Persons the responsiveness of which is affected by e. g. drugs, alcohol or medication, are not allowed to work with the machine.

The qualifications of the personnel for the different tasks are mentioned below:

Operator:

The operator is instructed by the operating company about the assigned tasks and possible risks in case of improper behaviour. Any tasks which need to be performed beyond the operation in the standard mode must only be performed by the operator if it is indicated in these instructions and if the operating company expressly commissioned the operator.

Electrical specialist:

Due to his professional training, knowledge and experience as well as his knowledge of respective standards and regulations the electrical specialist is able to perform works on the electrical system and to recognise and avoid any possible dangers himself.

Specialist staff:

Due to their professional training, knowledge and experience as well as their knowledge of relevant regulations the specialist staff is able to perform the assigned tasks and to recognise and avoid any possible dangers themselves.


Manufacturer:

Certain works may only be performed by specialist personnel of the manufacturer. Other personnel is not authorized to perform these works. Please contact our customer service for the execution of all arising work.


2.4 Personal protective equipment

The personal protective equipment serves to protect persons against impairments of safety and health while working. The staff has to wear personal protective equipment while performing different works on and with grinding system which are indicated in the individual paragraphs of these instructions.


The personal protective equipment is explained in the following paragraph:




Hearing protection
Hearing protection helps to protect your hearing from harmful noise and other loud noises.




Eye protection
The protective goggles protect the eyes against parts flying off and splashes of liquids.



Breathing protection
The breathing protection serves for protecting the respiratory passages and the lung against the intake of dust particles.



Protective gloves
The protective gloves serve to protect the hands against sharp components as well as against friction, abrasions or deep injuries.



Safety boots
The safety boots protect the feet against crushes, falling parts and slipping over on slippery underground.



Protective clothes
The protective clothes are tight clothes of little tensile strength.

2.5 Safety signs on the Machine

The following safety signs and notes are applied on the grinding system (Fig. 1), which need to be observed and followed..



Fig. 1: Safety signs on the Machine

Damaged or missing safety symbols at the machine may lead to errors with personal and material damages. The safety symbols which are applied on the machine must not be removed. Damaged safety symbols must be replaced immediately. The machine must be put out of operation from the moment when the labels are unable to be recognized and understood at first glance, until new labels are attached.

2.6 Safety data sheets

Safety data sheets for hazardous materials can be obtained from your specialist dealer or by phone: +49 (0)951/96555-0. Specialist dealers can find safety data sheets in the download area of the partner portal.

2.7 Safety devices

Motor protection switch

The engine of the Edge milling machine has a thermal protection switch that automatically shuts off the engine in case of thermal overload. After eliminating the cause of the overload and waiting for the engine to cool down completely, the engine can be restarted.

3 Intended Use

The Edge milling machine KSO 1500 F is used exclusively for sanding wood and wood-like materials (wood fiber board, chipboard, plywood boards, laminated and non-laminated boards, etc.). It must be connected to a suitable extraction system. The edge sanding machine is suitable for private use, not for industrial use. Proper use also includes compliance with all information in this manual. Any use beyond the intended use or otherwise is considered misuse.

WARNING!
Risk of misuse!

Misuse of the Edge milling machine can lead to dangerous situations.

- Operate the edge sanding machine only in the performance range specified in the technical data.
- Never bypass or override the safety devices.
- Never work on other materials than specified in the intended use.
- Only operate the edge sanding machine in a technically perfect condition.
- Never work on several workpieces at the same time.

Unauthorized modifications or changes to the grinder may void the CE conformity of the edge grinding machine and are prohibited. The company Stürmer Maschinen GmbH assumes no liability for design and technical changes to the edge grinding machine.

The improper use of the edge sanding machine as well as the disregard of the safety regulations or the operating instructions exclude a liability of the manufacturer for resulting damage to persons or objects and cause the warranty to expire!

4 Technical Data

Model	KSO 1500 F
Electrical connection	3,0 kW / 400 V
Motor output oscillation	0,25 kW
Table height min./max.	740 / 920 mm
Table height adjustment	180 mm
Longitudinal table dimensions	750 x 300 mm
Transverse table dimensions	330 x 330 mm
Sanding belt dimensions	2600 x 150 mm
Sanding surface	850 x 200 mm
Sand roller diameter	100 mm
Circumferential belt speed	20 m/sec
Inclination of the grinding unit	90° - 45°
Extraction port Ø	Ø 120 / 80 mm
Dimensions (LxBxH)	1720 x 700 x 1030 mm
Weight	180 kg
Min. Suctioning speed	25 - 30 m/s
Suction	1800 m ³ /h

4.1 Type plate

Kantenschleifmaschine
Sanding machine ⓘ CE

Typ Type	KSO 1500	Serien-Nr. Serial no.	
Artikel-Nr. Item no.	590 1500	Baujahr Year of manufacture	
Motorleistung Motor power	3,0 kW	Netzanschluss Power connection	400 V

Stürmer Maschinen GmbH
Dr.-Robert-Pfleger-Str. 26, 96103 Hallstadt
Deutschland / Germany

Fig. 2: Type plate

5 Transport, Packaging, Storage

5.1 Delivery and Transport

Delivery

Check the Edge milling machine for visible transport damage after delivery. If you discover any damage to the Edge milling machine, immediately report it to the transport company or the dealer.

Transport

Improper transport is accident-prone and can cause damage or malfunctions for which we do not grant any liability or guarantee.

Transport the scope of delivery secured against shifting or tilting with a sufficiently dimensioned industrial truck to the installation site.



WARNING!

Severe or fatal injuries may occur if parts of the machine tumble or fall down from the forklift truck, pallet truck or from the transport vehicle. Follow the instructions and information on the transport box.

Note the total weight of the machine. The weight of the machine is indicated in the "Technical data" of the machine. When the machine is unpacked, the weight of the machine can also be read on the rating plate.

Only use transport devices and load suspension gear that can hold the total weight of the machine.



WARNING!

The use of unstable lifting and load suspension equipment that might break under load can cause severe injuries or even death. Check that the lifting and load suspension gear has sufficient load-bearing capacity and that it is in perfect condition.

Observe the accident prevention regulations issued by your Employers Liability Insurance Association or other competent supervisory authority, responsible for your company.

Fasten the loads properly.

General risks during internal transport



WARNING: DANGER OF TIPPING

The device may be lifted unsecured by a maximum of 2cm.

Employees must be outside the danger zone, the reach of loads.

Warn employees and, if necessary, advise employees of the hazard.

Devices may only be transported by authorized and qualified persons. Act responsibly during transport and always consider the consequences. Refrain from daring and risky actions.

Gradients and descents (e.g. driveways, ramps and the like) are particularly dangerous. If such passages are unavoidable, special caution is required.

Before starting the transport check the transport route for possible danger points, unevenness and disturbances as well as for sufficient strength and load capacity.

Danger points, unevenness and disturbance points must be inspected before transport. The removal of danger spots, disturbances and unevenness at the time of transport by other employees leads to considerable dangers.

Careful planning of internal transport is therefore essential.

Transport with a forklift / pallet truck:

The edge sanding machine can be transported with a forklift or pallet truck if it is firmly mounted on a pallet.

Transport by crane:

Step 1: Attach 2 ropes with sufficient carrying capacity to the crane hook and to the points of the edge grinding machine suitable for transport.

Step 2: Carefully lift and transport the edge sanding machine with the crane.

5.2 Packaging

All packaging materials and packaging aids used by the Edge milling machine are recyclable and must always be recycled. Packing components made of cardboard are shredded for waste paper collection. The foils are made of polyethylene (PE) and the upholstery parts made of polystyrene (PS). You can hand over these substances to a recycling center or to the disposal company responsible for you.

5.3 Storage

The Edge milling machine must be thoroughly cleaned before storing in a dry, clean and frost-free environment. Cover the machine with a protective tarpaulin.

6 Description of the machine

Illustrations in this manual may differ from the original.



Fig. 3: Edge milling machine

- 1 Sanding belt
- 2 Angle stop
- 3 Engine
- 4 Hand wheel for height adjustment of the work table
- 5 Suction hose
- 6 Anchoring hole
- 7 STOP button
- 8 START button
- 9 ON and OFF switch
- 10 Height adjustment of the side table (hidden)
- 11 Side table

7 Setting up and connection

7.1 Requirements for the installation site

The Edge milling machine must be set up stable on a level and firm ground. It is important to ensure that there is enough freedom of movement to work. On each side there must be at least 1 m distance from the wall to the edge sanding machine.

The site should meet the following criteria:

- The substrate must be level, firm and vibration-free.
- The substrate must not let any lubricant through.

- The installation or work area must be dry and well ventilated.
- Do not operate machines that cause dust and chips near the machine.
- There must be sufficient space for the operating personnel, for material transport as well as for adjustment and maintenance work.
- The site must have good lighting.
- There must be a suction device with min. 1800 m³ / h extraction capacity, min. 25 m / s flow velocity at the suction connection; Hose diameter 120 mm, max. Hose length 4 m.

7.2 Set up the Edge milling machine



CAUTION!

Danger of injury due to a machine that is not stably erected!
Check the stability of the machine after placing it on stable ground.



CAUTION!

Pay attention to the weight of the machine!
The machine may only be set up by two persons.
Check the aid accordingly for sufficient dimensioning and load capacity.



ATTENTION!

To ensure sufficient stability of the machine, it should be screwed to the ground. There are 4 holes on the machine housing for this purpose

Complete the following steps to get the machine up and running:

Mount side table

- Step 1: Screw the side table support to the machine housing.
- Step 2: Insert the side table into the carrier and clamp it to the desired height with the clamping levers (Fig. 4).

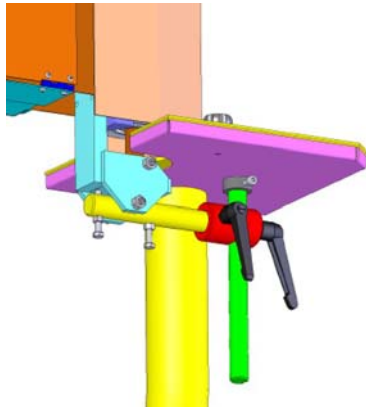


Fig. 4: Mount side table

Mount suction hoses



Tips and recommendations

The extraction device for chips and dust must have a capacity of at least 1800 m³ / h. at a flow rate of 25 - 30 m / s.

Step 1: Fasten the 120 mm and 80 mm suction hoses with hose clamps to the side suction connections on the machine housing. Attach the other ends of the suction hoses with hose clamps to the suction pipe of the sanding belt covers

Step 2: Fasten the 120 mm suction hose with a hose clamp to the suction connection on the back of the machine housing. Attach the other end of the suction hose with a hose clamp to the intake manifold of the extraction system.



NOTE!

After setting, remove the grease from the bare metal parts, which has been applied for protection.

- Use usual solvents.
- No water, no nitrolic solvents or similar use!

7.3 Electrical connection



DANGER!

Danger to life due to electric shock!

There is danger to life when in contact with live components. Switched on electrical components can cause uncontrolled movements and lead to serious injuries.



DANGER!

All work on the electrical installation may only be carried out by a qualified electrician.



DANGER!

The three phases must be connected in such a way that the saw blade moves according to the cutting direction shown on the housing.

When making electrical connections, make sure that the characteristics (voltage, mains frequency, protection) match those on the rating plate and for the motor.

Step 1: Check that the Edge milling machine is off.

Step 2: Connect the machine to the mains and check the direction of motor rotation. If the direction of rotation is wrong, two phases must be exchanged.

7.4 Mount or change the sanding belt



DANGER!

Danger to life due to electric shock!

There is danger to life when in contact with live components. Switched on electrical components can cause uncontrolled movements and lead to serious injuries.

- Disconnect the power plug before working on the machine.

Step 1: Disconnect the machine from the mains.

Step 2: Open or remove the sanding belt covers.

Step 3: Loosen the band tensioner to release the sanding belt.

Step 4: Insert or change the sanding belt. Then slowly tension the sanding belt.



DANGER!

Check the direction of the sanding belt! Corresponding markings (arrows) are located on the back of the sanding belt.

Step 5: Turn on the edge sanding machine for a short time and check the tape run. The sanding belt must run in the middle of the roll. If necessary, readjust the sanding belt with the adjusting screw for the roller.

Step 6: Close the covers.

7.5 Adjusting the table height

Step 1: Disconnect the machine from the mains.

Step 2: Loosen the handwheel clamping lever.



Fig. 5: Table height adjustment

Step 3: Bring the table to the desired height with the handwheel (Fig. 5).

Step 4: Secure the set position with the clamping lever.

7.6 Angle adjustment of the sanding belt

Step 1: Disconnect the machine from the mains.

Step 2: Release the lock for the angle adjustment by loosening the clamping lever A (Fig. 6).

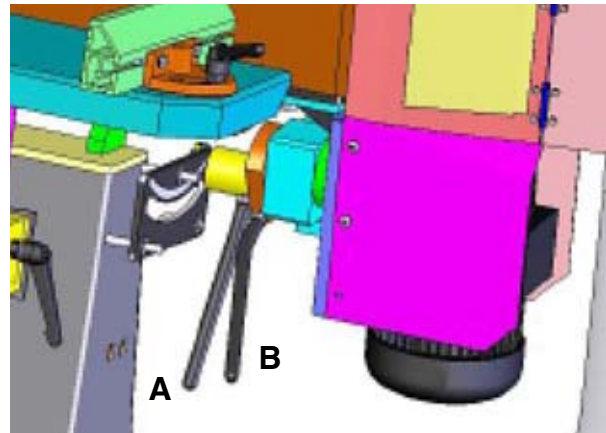


Fig. 6: Angle adjustment of the sanding belt

Step 3: Swivel the grinding unit with lever B (Fig. 6) at the desired angle (from 90 ° to 45 °) and lock it with lever A after reaching the desired angle.

Step 4: Adjust the table height to the appropriate position to the sanding belt.

8 Operation of the Edge milling machine



DANGER!

Danger to life due to electric shock!

There is danger to life when in contact with live components. Switched on electrical components can cause uncontrolled movements and lead to serious injuries.

- Disconnect the power before starting adjustments to the machine.



WARNING!

Risk of death!

There is danger to life for the operator and other persons if they do not adhere to the following rules.

- The Edge milling machine may only be operated by a trained and experienced person.
- The operator may not work while under the influence of alcohol, drugs or medication.
- The operator must not work when he is tired or suffering from concentration-impairing illnesses.
- The Edge milling machine may only be operated by one person. Other persons must keep away from the work area during operation.



ATTENTION!

Crushing!

Incorrect work on the machine can cause injury to the upper limbs.



Wear ear protection!



Wear safety glasses!



Wear safety gloves!



Wear safety shoes!



Wear protective clothing!

Step 1: Move the worktable to the desired position.

Step 2: Slowly tension the sanding belt.

Step 3: Turn on the edge sanding machine for a short time and check the tape run. The sanding belt must run in the middle of the roll. If necessary, readjust the sanding belt with the ribbon adjustment screws.

Step 4: Adjust the sanding belt and the stop to the desired position or angle. If necessary, readjust the position of the worktable.

Step 5: Switch on the machine and the extraction and carry out the grinding process.

Step 6: After completing the grinding process, press the red STOP button, set the ON / OFF switch to 0 and switch off the extraction system. Disconnect the mains plug of the edge grinding machine.

9 Care, maintenance and repair



DANGER!

Danger of electrocution!

There is danger to life when in contact with live components. Switched on electrical components can cause uncontrolled movements and lead to serious injuries.

- Before starting any cleaning or maintenance work, switch off the machine and disconnect the power plug.
- Connections and repairs of the electrical equipment may only be carried out by a qualified electrician.

9.1 Care after the end of work



Wear safety gloves!



Wear protective clothing!



NOTE!

Never use harsh cleaning agents for cleaning. This can lead to damage or destruction of the device.

Step 1: Disconnect the power plug from the power outlet.

Step 2: Empty and clean the suction device.

Step 3: Clean the machine from sawdust and sawdust.

Step 4: Spray all unpainted metal surfaces with some anti-rust spray.

Step 5: Inspect the machine for damage to the safety devices and the sanding belt. If necessary, carry out the repair or arrange for it, observing the safety instructions.

9.2 Maintenance and repair

Maintenance and repair work may only be carried out by qualified personnel.

If the Edge milling machine does not work properly, contact a dealer or our customer service. The contact details can be found in chapter 1.2 Customer Service.

All protection and safety equipment must be reinstalled immediately after completion of repair and maintenance work.

9.2.1 Functional test

The edge sanding machine is delivered ready to use.

Before each use, a functional test should be carried out.

The sanding belt has to be tensioned.

Step 1: Manually move the sanding belt, making sure it is centered on the roller. If necessary, readjust the sanding belt with the ribbon adjustment screw.

Step 2: Turn on the edge sanding machine for a short time and check the tape again.

Step 3: Switch off the edge sanding machine again.

The edge sanding machine is ready for operation.

9.2.2 Sanding belt

The sanding belt is a wearing part, which must be regularly checked for faults and replaced when worn.

Replace a damaged abrasive belt immediately!

The belt is equipped with an automatic tensioning mechanism. This eliminates a periodic re-tensioning of the tape.

9.2.3 Tape guide

Check the tape guide at regular intervals for the correct setting.

If the edge sanding machine is not used for a long time, the sanding belt has to be relaxed.

9.2.4 Suction

Check the suction daily for its adequate function. If the extraction system does not work or only to a limited extent, it must be repaired again. Only then may be put into operation on the edge grinding machine.

9.2.5 Movable parts



Wear safety glasses!

All moving parts must be cleaned after 50 hours of operation with a soft brush. Clean the edge sanding machine with a strong stream of compressed air. Then apply a thin layer of oil or grease to the moving parts. Lubricate the slide rails with grease.

10 Troubleshooting

Fault	Possible causes	Disposal
The edge grinding machine stops during operation.	<p>The on / off switch is damaged.</p> <p>The on / off switch line is damaged.</p> <p>The relay is damaged.</p> <p>The engine is defective.</p> <p>The fuses are defective.</p>	<p>Have the edge grinder checked by an electrician and replace the damaged parts.</p> <p>Turn on the house fuse.</p> <p>Wait until the engine has cooled down.</p>
The edge sanding machine does not start.	One or more power phases have failed.	Have qualified personnel check that all 3 phases are live.
The edge sanding machine slows down when sanding.	The workpiece is pressed too tightly against the grinding surface by the user.	Reduce the contact pressure.
The sanding belt runs off the rollers.	The sanding belt track is set incorrectly.	Set the sanding belt track correctly (see "Assembly and settings").
The wood gets dark or burns during processing.	<p>1.The sanding belt is worn or added with sanding dust.</p> <p>2.Excessive contact pressure is applied to the workpiece on the grinding surface.</p>	<p>1.Change the sanding belt.</p> <p>2.Reduce the contact pressure.</p>

11 Disposal instructions / recycling facilities

In your own interests and in the interests of the environment, please ensure that all components of the machine are disposed of in the proper and approved way.

11.1 Decommission

Disused devices must be taken out of service immediately in order to avoid later misuse and endangering the environment or people.

Step 1: Remove all environmentally hazardous fluids from the old device.

Step 2: If necessary, dismantle the machine into manageable and usable assemblies and components.

Step 3: Guide the machine components and operating materials to the appropriate disposal routes.

11.2 Disposal of electrical equipment

Please note that electrical appliances contain a variety of recyclable materials as well as environmentally harmful components.

Make sure that these components are disposed of separately and properly. In case of doubt, please contact your municipal waste disposal.

If necessary, the help of a specialized waste disposal company can be used for the treatment.

11.3 Disposal of lubricants

The disposal instructions for the lubricants used are provided by the lubricant manufacturer. If necessary, ask for the product-specific data sheets.

11.4 Disposal via municipal collection points

Disposal of used electrical and electronic equipment (Applicable in the countries of the European Union and other European countries with a separate collection system for these appliances).



The symbol on the product or its packaging indicates that this product should not be treated as normal household waste, but must be returned to a collection point for the recycling of electrical and electronic equipment. By helping to properly dispose of this product, you are protecting the environment and the health of others. Environment and health are endangered by improper disposal. Material recycling helps to reduce the consumption of raw materials. For more information about recycling this product, contact your local community, municipal waste management, or the shop where you purchased the product.

12 Spare parts



DANGER!

Danger of injury by the use of wrong spare parts!

Dangers may result for the user and damages as well as malfunctions may be caused by using wrong or damaged spare parts

- Only use original spare parts of the manufacturer or spare parts admitted by the manufacturer.
- Always contact the manufacturer in case of uncertainties.



Tips and recommendations

Using non-approved spare parts voids the manufacturer's warranty.

12.1 Ordering spare parts

The spare parts may be purchased with the authorised dealer.

Indicate the following basic information for spare part orders:

- Type of device
- Serial number
- Quantity
- Designation
- Required mode of dispatch (mail, freight, sea, air, express)
- Address of dispatch

Spare parts orders without details given above can not be considered. If the shipping method is missing, shipping will be at the discretion of the supplier.

Information on the device type, article number and year of manufacture can be found on the type plate, which is attached to the device.

Example

The engine for the Edge milling machine KSO 1500 F must be ordered. The engine has the number 15 in the spare parts drawing 3.

By ordering spare parts, send a copy of the spare parts drawing (3) with the marked part (engine) and marked position number (15) to the dealer or spare parts department and provide the following information:

- Type of device: **Edge milling machine KSO 1500 F**
- Item number: **5901500**
- Drawing number: **3**
- Position number: **15**

12.2 Spare parts drawings KSO 1500 F

The following drawings is intended to help in case of service, to identify necessary spare parts. To order send a copy of the parts drawing with marked components to your dealer.

Spare parts drawing 1

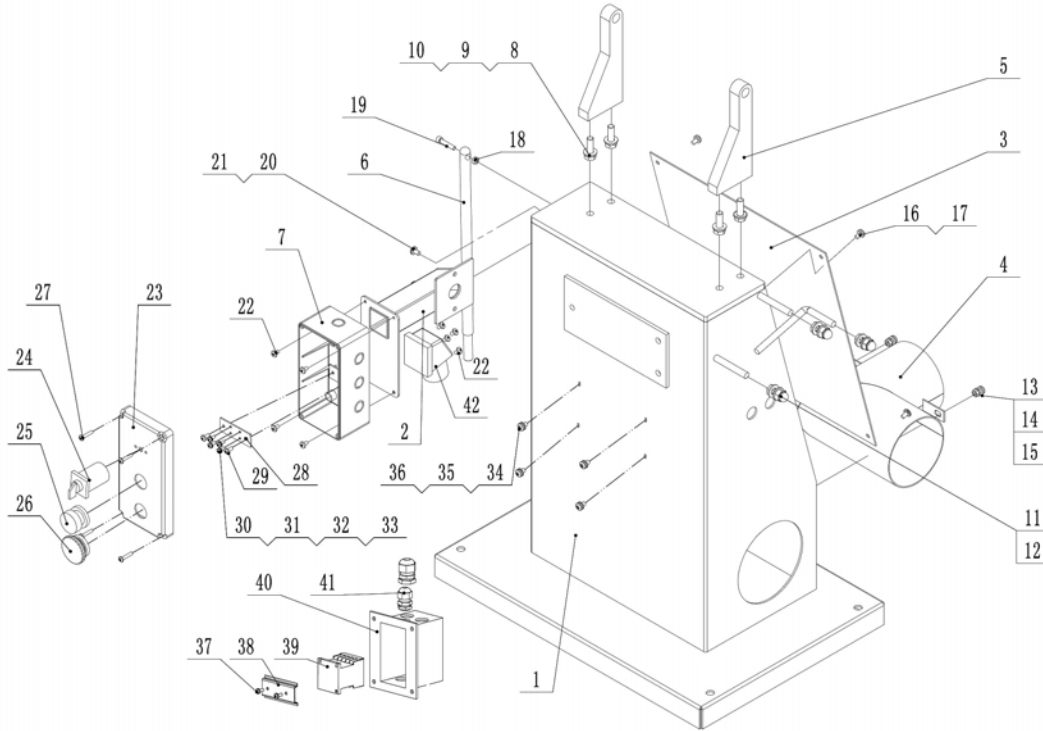


Fig. 7: Spare parts drawing 1

Spare parts drawing 2

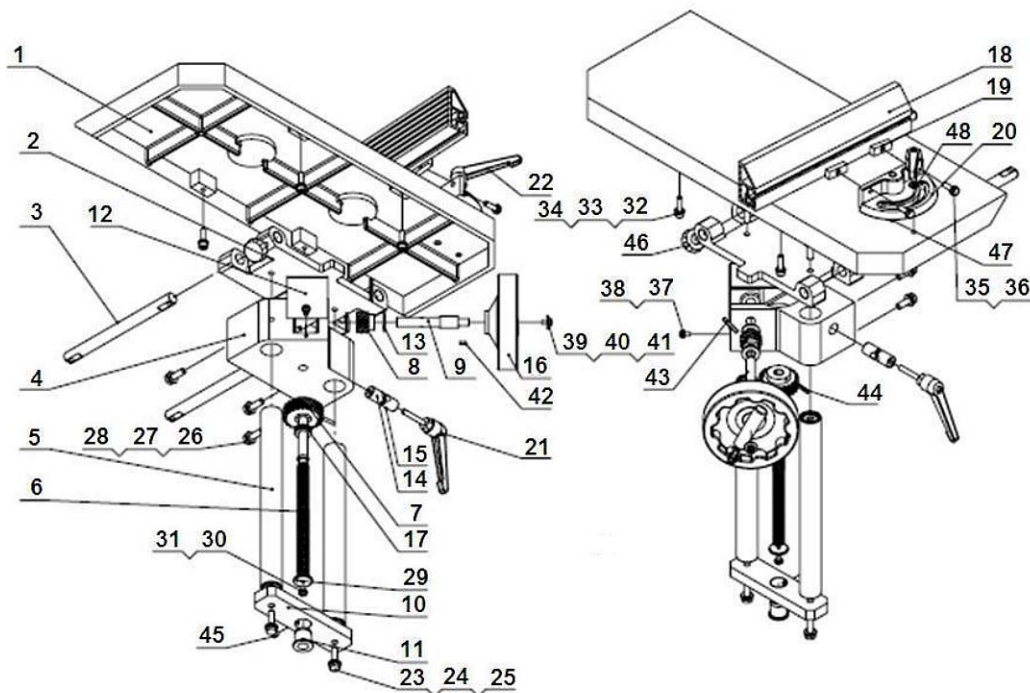


Fig. 8: Spare parts drawing 2

Spare parts drawing 3

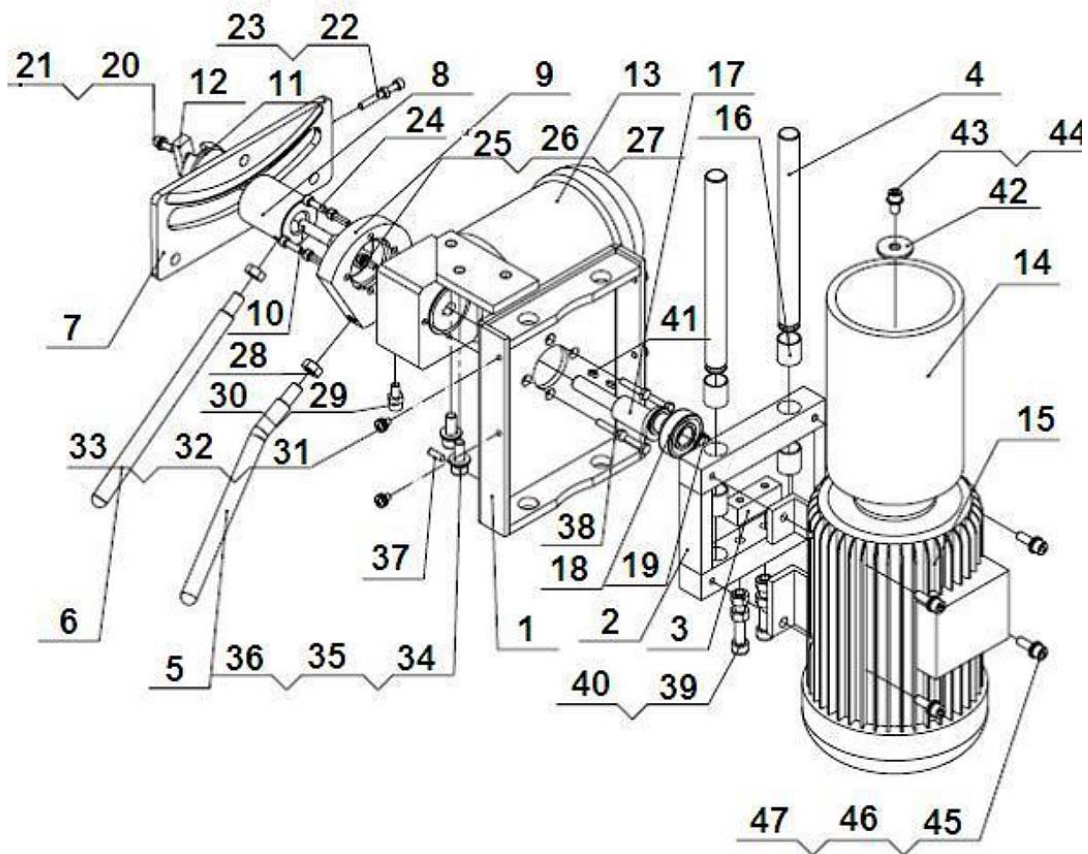


Fig. 9: Spare parts drawing 3

Spare parts drawing 4

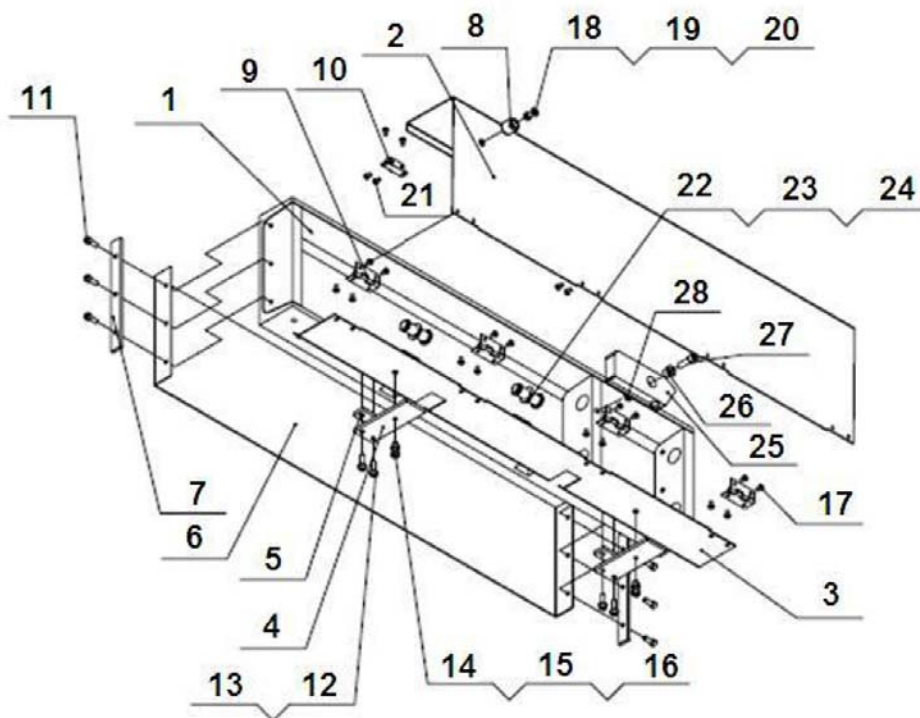


Fig. 10: Spare parts drawing 4

Spare parts drawing 5

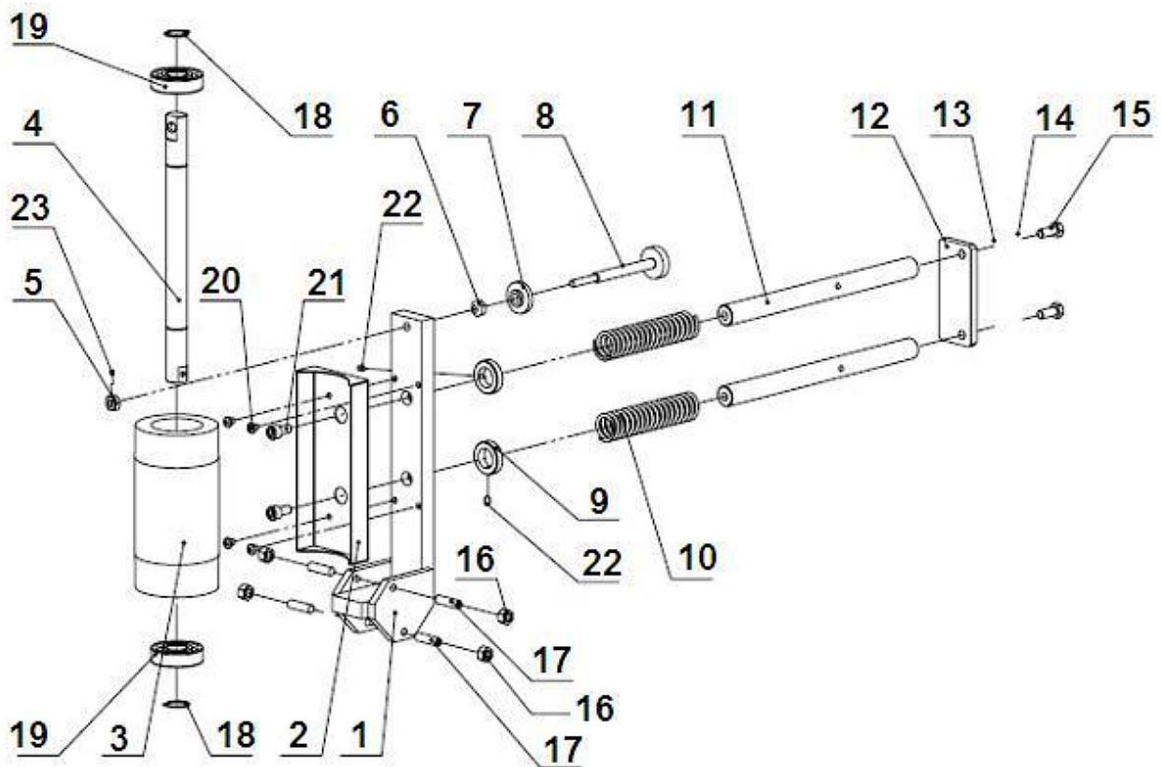


Fig. 11: Spare parts drawing 5

Spare parts drawing 6

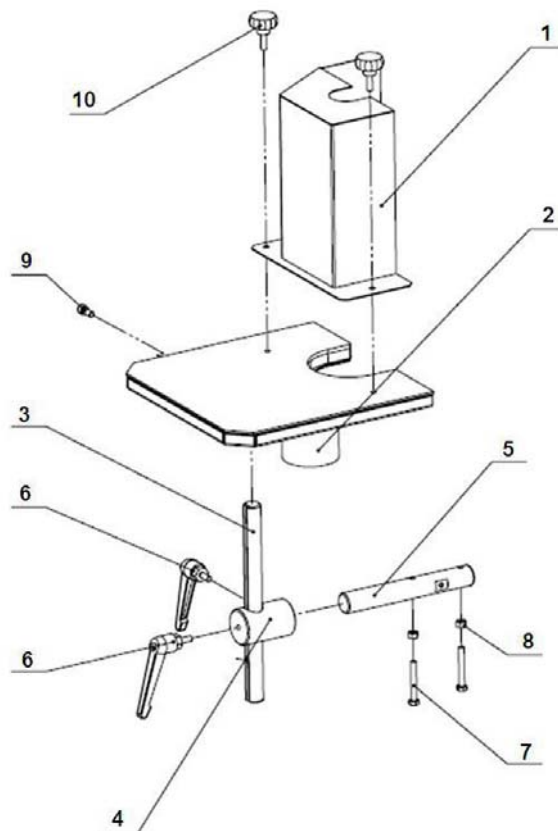


Fig. 12: Spare parts drawing 6

Spare parts drawing 7

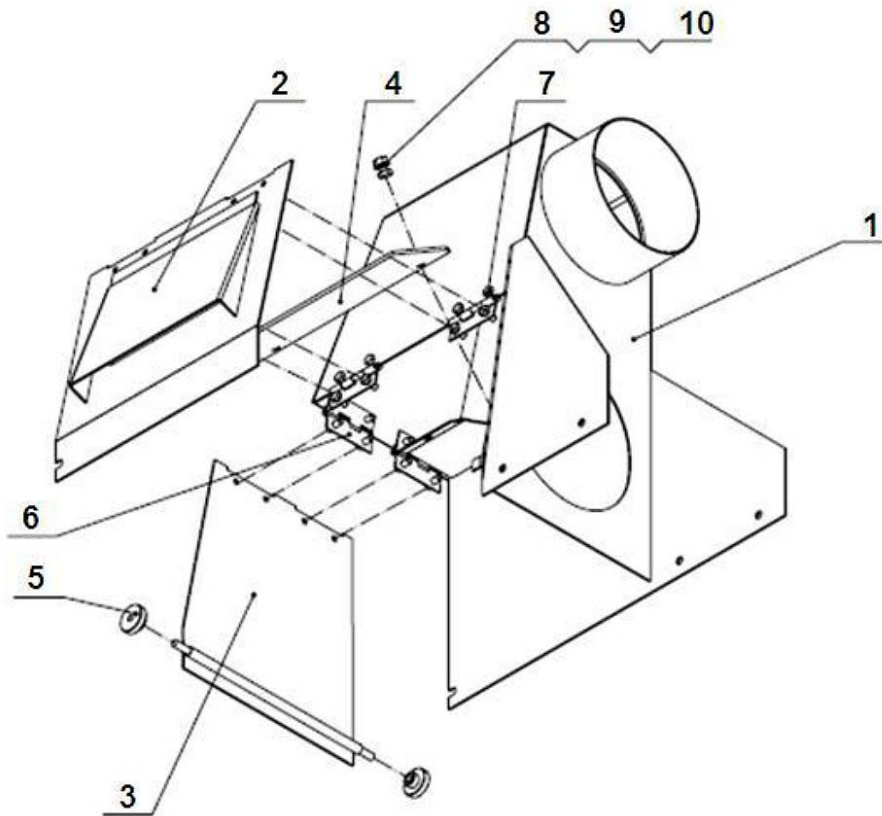


Fig. 13: Spare parts drawing 7

13 Electrical schematic

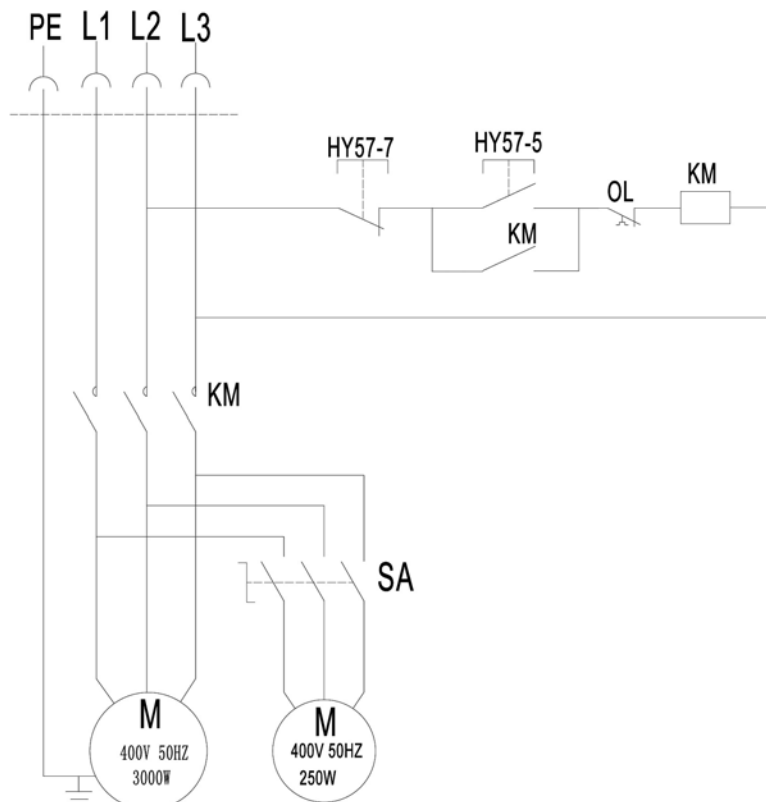


Fig. 14: Electrical schematic

14 EC-Declaration of Conformity

According to Machinery Directive 2006/42/EC Annex II 1.A

Manufacturer / distributor: Stürmer Maschinen GmbH
Dr.-Robert-Pfleger-Str. 26
D-96103 Hallstadt

hereby declares that the following product

Product Group: Holzstar® Woodworking machines

Machine type: Edge milling machine

Description of the machine: KSO 1500 F

Item number: 5901500

Serial number*: _____

Year of manufacture*: 20____

* please fill in according to the information on the type plate

corresponds to all the relevant provisions of the abovementioned Directive and other Directives applied (below) - including their amendments current at the time of the declaration.

Relevant EU Directive: 2014/30/EU EMC-Directive
2012/19/EU WEEE-Directive

The following harmonized standards were applied:

DIN EN ISO 12100:2011-03 Safety of machinery. General principles for design Risk assessment and risk reduction (ISO 12100:2010)

DIN EN 60204-1:2019-06 Safety of machinery - Electrical equipment of machines - Part 1: General requirements

Responsible for documentation: Kilian Stürmer, Dr.-Robert-Pfleger-Str. 26, D-96103 Hallstadt

Hallstadt, den 21.04.2021



Kilian Stürmer
Manager



