

Operating manual

Version 1.0.4

Polishing machine

OPTIpolish
GU 35P Part no. 3101560

Safety

Technical specification

Delivery, interdepartmental
transport and unpacking

Operation

Maintenance

Appendix

Ersatzteile - Spare parts





Preface

Dear customer,

Thank you very much for purchasing a product made by OPTIMUM.

OPTIMUM metal working machines offer a maximum of quality, technically optimum solutions and convince by an outstanding price performance ratio. Continuous enhancements and product innovations guarantee state-of-the-art products and safety at any time.

Before commissioning the machine please thoroughly read these operating instructions and get familiar with the machine. Please also make sure that all persons operating the machine have read and understood the operating instructions beforehand.

Keep these operating instructions in a safe place nearby the machine.

The operating instructions include indications for safety-relevant and proper installation, operation and maintenance of the machine. The continuous observance of all notes included in this manual guarantee the safety of persons and of the machine.

The manual determines the intended use of the machine and includes all necessary information for its economic operation as well as its long service life.

In the paragraph "Maintenance" all maintenance works and functional tests are described which the operator must perform in regular intervals.

The illustration and information included in the present manual can possibly deviate from the current state of construction of your polishing machine. Being the manufacturer we are continuously seeking for improvements and renewal of the products. Therefore, changes might be performed without prior notice. The illustrations of the machine may be different from the illustrations in these instructions with regard to a few details. However, this does not have any influence on the operability of the polishing machine.

Therefore, no claims may be derived from the indications and descriptions. Changes and errors are reserved!

Your suggestion with regard to these operating instructions are an important contribution to optimising our work which we offer to our customers. For any questions or suggestions for improvement, please do not hesitate to contact our service department.

If you have any further questions after reading these operating instructions and you are not able to solve your problem with a help of these operating instructions, please contact your specialised dealer or directly the company OPTIMUM.

Optimum Maschinen Germany GmbH

Dr.- Robert - Pflieger - Str. 26

D-96103 Hallstadt

Fax (+49)0951 / 96555 - 888




Email: info@optimum-maschinen.de

Internet: www.optimum-machines.com



1 Safety

Glossary of symbols

	provides further instructions
	calls on you to act
	listings

This part of the operating instructions

- explains the meaning and use of the warning notes included in these operating instructions,
- defines the intended use of the polishing machine,
- points out the dangers that might arise for you or others if these instructions are not observed,
- informs you about how to avoid dangers.

In addition to these operating instructions, please observe




- the applicable laws and regulations,
- the statutory provisions for accident prevention,
- the prohibition, warning and mandatory signs as well as the warning notes on the polishing machine.

Always keep this documentation close to the polishing machine.

1.1 Safety instructions (warning notes)

1.1.1 Classification of hazards

We classify the safety warnings into different categories. The table below gives an overview of the classification of symbols (ideogram) and the warning signs for each specific danger and its (possible) consequences.

Symbol	Alarm expression	Definition / consequence
	DANGER!	Impending danger that will cause serious injury or death to people.
	WARNING!	A danger that can cause serious injury or death.
	CAUTION!	A danger or unsafe procedure that can cause personal injury or damage to property.
	ATTENTION!	Situation that could cause damage to the polishing machine and product, as well as other types of damage. No risk of injury to persons.
	INFORMATION	Practical tips and other important or useful information and notes. No dangerous or harmful consequences for people or objects.



1.1.2 Other pictograms



Activation forbidden!



Warning: flammable substances!



Warning: suspended loads!



Warning: risk of stumbling!



Warning: tilting danger!



Warning: automatic start-up!



Warning: biological hazard!



Warning: injuries to hands!



Read the operating instruction before commissioning!



Pull out the mains plug!



Wear protective glasses!



Use face shield!



Wear safety shoes!



Wear a protective suit!



Use ear protection!



Protect the environment!

1.2 Intended use

WARNING!

In the event of improper use, the polishing machine

- may be a hazard to personnel,
- the polishing machine and other material property of the operating company will be endangered,
- the functionality of the polishing machine may be compromised.



The polishing machine is designed and constructed solely for polishing materials using suitable polishing wheels. The polishing machine must be used exclusively for this purpose.

If the polishing machine is used in any way other than described above, modified without authorization of Optimum Maschinen Germany GmbH, then the polishing machine is being used improperly.

We accept no liability for damage resulting from improper use.

We expressly point out that the guarantee will expire, if any constructive, technical or procedural changes are not performed by the company Optimum Maschinen Germany GmbH. It is also part of the intended use that you

- the limits of performance of the polishing machine are observed,
- the operating manual is observed,
- the inspection and maintenance instructions are observed.



WARNING!

Severe injuries due to non-intended use.

It is forbidden to make any modifications or alternations to the operating parameters values of the polishing machine. They could pose an accident hazard to persons and cause damage to the polishing machine.



ATTENTION!

If the polishing machine is not used as intended or if the safety directives or the operating instructions are ignored the liability of the manufacturer for any damages to personnel or objects resulting hereof is excluded and the claim under guarantee is becoming null and void!



1.3 Reasonably foreseeable misuse

Any other use other than that specified under "Intended use" or any use beyond the described use shall be deemed as non-intended use and is not permissible.

Any other use has to be discussed with the manufacturer.

In order to avoid misuse, it is necessary to read and understand the operating instructions before first commissioning.

Operators must be qualified.

1.3.1 Avoiding misuse

The installation of grinding wheels or drive pulleys to drive other devices is prohibited. The emergency stop switch included in the scope of delivery must be mounted within easy reach.

We expressly point out that the guarantee will expire, if any constructive, technical or procedural changes are not performed by the company Optimum Maschinen Germany GmbH.

1.4 Possible dangers caused by the polishing machine

The polishing machine was built using state-of-the-art technology. Nevertheless, there is a residual risk, as the polishing machine operates with

- high speeds,
- rotating parts,
- electrical voltage and currents,

We have used design and safety engineering to minimize the health risk to personnel resulting from these hazards.

If the polishing machine is used and maintained by personnel who are not duly qualified, there may be a risk resulting from its incorrect or unsuitable maintenance.

INFORMATION

Everyone involved in the assembly, commissioning, operation and maintenance must

- be duly qualified,
- and strictly follow these operating instructions.

Always disconnect the polishing machine from the electrical power supply before changing polishing wheels, performing cleaning or maintenance tasks.



1.5 Qualification

1.5.1 Target group private users

The machine can be used in the private domain. The understanding of persons in the private sector with appropriate training has been taken into account in this manual. It is essential that the private user is aware of the dangers involved in operating this machine. We recommend to



attend a training in the use of machine tools. Your specialist dealer can offer you an appropriate training course. These courses are also offered by adult education centres in Germany.

1.5.2 Obligations of the User

The user must

- have read and understood the operating manual,
- be familiar with all safety devices and regulations,
- be able to operate the polishing machine.

1.5.3 Additional requirements regarding the qualification

Additional requirements apply for work on electrical components or equipment:

- They must only be performed by a qualified electrician or person working under the instructions and supervision of a qualified electrician.

Before starting work on electrical parts or operating agents, the following actions must be taken in the order given:

- disconnect all poles,
- secure against restarting,
- check that there is no voltage.

1.6 Safety devices

The polishing machine must only be operated with fully functional safety devices.

Stop the polishing machine immediately if there is a failure on the safety device or becomes ineffective.

It is your responsibility!

If a safety device has been activated or has failed, the polishing machine must only be used if

- the cause of the fault has been eliminated,
- you have verified that there is no danger to personnel or objects.

The polishing machine features the following safety devices:

- A shaft sleeve on each side of the drive shaft as a protective cover.
- A protective cover for the polishing wheels.
- An emergency stop switch.
- A restart protection that prevents the unit from restarting independently by connecting the power supply.

WARNING!

The provided and supplied with the machine shaft sleeves are designed to reduce the risks of winding up garments or cloths, but not to eliminate them completely. Always work carefully and observe the limit values of the working process.



1.7 Personal protective equipment

For certain work personal protective equipment is required.

- Protect your face and your eyes: Wear a safety helmet with facial protection when performing work where your face and eyes are exposed to hazards.
Wear protective gloves when handling pieces with sharp edges.
- Use safety shoes when you assemble, disassemble or transport heavy components, or transport the polishing machine.
- Use ear protection if the noise level (emission) in the workplace exceeds 80 dB (A).
- Before starting work make sure that the required personal protective equipment is available at the work place.



GU35P_GB.fm



CAUTION!

Dirty or contaminated personnel protective equipment can cause illness. It must be cleaned after each use and at least once a week.



1.8 For your own safety during operation

WARNING!

Before switching on the polishing machine, make sure that it does not endanger persons, that no objects are damaged, and that the direction of rotation of the polishing wheels is correct.



Avoid any unsafe work methods:

- The instructions mentioned in these operating instructions have to be strictly observed during assembly, operation, maintenance and repair.
- Use protective glasses!
- Do not work on the polishing machine, if your concentration is reduced, for example, because you are taking medication.
- Stay on the polishing machine until the polishing machine has come to a complete standstill.
- Use the specified personal protective equipment. Ensure you wear close-fitting clothing and, if necessary, a hairnet.
- Make sure that your operation does not create a safety hazard.



1.9 Emissions

The generation of noise emitted by the polishing machine is 70 to 75 dB(A). The sound power level is 78 to 83 dB(A). If the polishing machine is installed in an area where various machines are in operation, the noise exposure (immission) on the operator of the polishing machine at the working place may exceed 80 dB(A).

INFORMATION

This numerical value was measured on a new machine under the operating conditions specified by the manufacturer. The noise behaviour of the machine might change depending on the age and wear of the machine.

Furthermore, the noise emission also depends on production engineering factors, e.g. speed, material and clamping conditions.



INFORMATION

The specified numerical value represents the emission level and does not necessarily a safe working level. Though there is a dependency between the degree of the noise emission and the degree of the noise disturbance it is not possible to use it reliably to determine if further precaution measures are required or not. The following factors influence the actual degree of the noise exposure of the operator:

- Characteristics of the working area, e.g. size or damping behaviour,
- other noise sources, e.g. the number of machines,
- other processes taking place in proximity and the period of time, during which the operator is exposed to the noise.

Furthermore, it is possible that the admissible exposure level might be different from country to country due to national regulations. This information about the noise emission should, however, allow the operator of the machine to more easily evaluate the hazards and risks.





CAUTION!

Depending on the overall noise exposure and the basic threshold values, machine operators must wear appropriate hearing protectors. We generally recommend the use of noise and ear protection.



2 Technical specification

Electrical connection	3x 400V ~50Hz (60 Hz)
Motor power	2.2 kW
Speed (50 Hz) [rpm]	1450
Speed (60 Hz) [rpm]	1740
Polishing wheel peripheral speed (50 Hz) [m/s]	27
Polishing wheel peripheral speed (60 Hz) [m/s]	32
Polishing wheel [mm]	Ø 350 x 40
Machine weight [kg]	52
Shaft diameter [mm]	Ø25
Polishing wheel bore diameter [mm]	Ø25

3 Delivery, interdepartmental transport and unpacking

CAUTION!

Injuries caused by parts falling over or off a forklift, pallet truck or transport vehicle. Only use means of transport that can carry the total weight and are suitable for it.



3.1 Notes on transport, installation and unpacking

Improper transport of individual devices and minor machines, unsecured devices and minor machines stacked on top of each other or next to each other in packed or already unpacked condition is accident-prone and can cause damage or malfunctions for which we do not grant any liability or guarantee.

Transport the scope of delivery secured against shifting or tilting with a sufficiently dimensioned industrial truck to the installation site.

3.1.1 General risks during internal transport

CAUTION: DANGER OF TIPPING!

The device may be lifted unsecured by a maximum of 2cm.

Employees must be outside the danger zone, the reach of loads. Warn employees and, if necessary, advise employees of the hazard.

Act responsibly during transport and always consider the consequences. Refrain from daring and risky actions.

Gradients and descents (e.g. driveways, ramps and the like) are particularly dangerous. If such passages are unavoidable, special caution is required.

Before starting the transport check the transport route for possible danger points, unevenness and disturbances as well as for sufficient strength and load capacity.





Danger points, unevenness and disturbance points must be inspected before transport. The removal of danger spots, disturbances and unevenness at the time of transport by other employees leads to considerable dangers.

Careful planning of internal transport is therefore essential.

3.2 Unpacking and connecting

The polishing machine is ready for operation. In order to obtain the correct direction of rotation, the phase sequence must be changed if necessary. This is done at your three-phase connection or - if equipped with it - at the three-phase connector by changing the phase sequence.



3.3 Scope of delivery

Check the polishing machine immediately after delivery for transport damage, missing parts and loose locking bolts. Compare the scope of delivery with the delivery note. Polishing wheels are available in specialist shops or from our main catalogue.

An emergency stop switch is included in the scope of delivery and must be attached to the optional machine base or on your table within easy reach.

3.4 Storage

ATTENTION!

Incorrect and improper storage might result in damage or destruction of electrical and mechanical machine components.

Store packed and unpacked parts only under the intended environmental conditions. Follow the instructions and information on the transport box.

Consult Optimum Maschinen Germany GmbH if the machine and accessories are stored for more than three months or are stored under different environmental conditions than those specified here.



3.5 Set-up and assembly

3.5.1 Installation site requirements

Organise the working area around the polishing machine according to the local safety regulations.

WARNING!

The polishing machine must be firmly connected to the substructure.

CAUTION!

Arrange the machine's connection cable in such a way that it will not cause a tripping hazard.



INFORMATION

In order to achieve high levels of functionality and machining accuracy, as well as a long service life of the machine, the set-up location should meet certain criteria.

The following points should be noted:

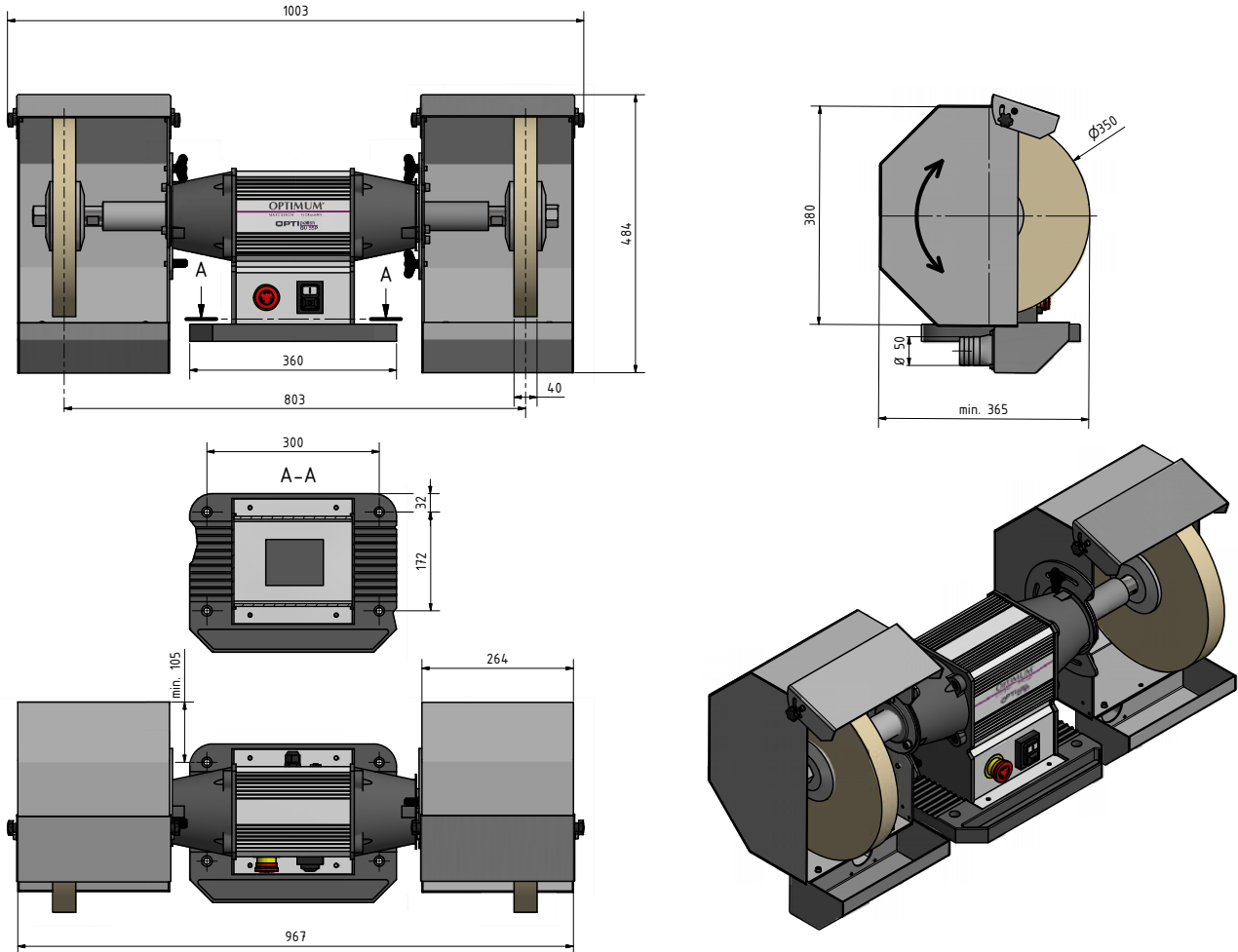
- The device must only be installed and operated in a dry and well-ventilated place.
- Avoid places close to machines which cause chips or dust.
- The installation site must be vibration-free, i.e. located away from presses, planing machines, etc.
- The foundation must be suitable for the polishing machine. Also make sure that the floor has sufficient load bearing capacity and is level.





- Provide enough space for set-up and operating personnel and material transport.
- Ensure adequate lighting is available (minimum value: 500 Lux, measured at the polishing wheel). In the event of a lower level of lighting, additional illumination must be provided, e.g. by means of a separate workplace light.
- The power plug of the polishing machine must be readily accessible.

3.6 Dimensions



Img.3-1: GU 35P

3.7 First commissioning

ATTENTION!

Before commissioning the machine, all bolts, fastenings and protections must be checked and retightened as necessary!



WARNING!

Danger from the use of unsuitable polishing wheels. Only use polishing wheels that can withstand the speed requirements and loads that occur.



3.7.1 Power supply

- ➔ Connect the electrical supply cable.
- ➔ Check the fusing (fuse) of your electrical supply.
- ➔ Check the phase sequence, the polishing wheel must rotate in the direction indicated.



GU35P_GB.fm



4 Operation

- Before you start polishing, check that the workpiece is free of oil, grease and paint residues. This prevents smearing or soiling of the polishing wheel. For polishing wheels, there are additives that can improve the polishing effect.
- Check the condition of the polishing wheels. Polishing wheels must be replaced if they are dirty or produce an imbalance due to wear.
- Polishing wheels must be disposed of in an environmentally friendly manner.

4.1 Switching the machine On

- Plug in the mains plug.
- Unlock the emergency stop switch.
- Switch on the machine at the On switch.

4.2 Switching the machine Off

CAUTION!

The emergency stop switch may only be operated in an emergency. The machine must not be brought to a standstill in the normal way using the emergency stop switch. The service life of such switches is generally not designed for bringing machines to an operational standstill.



- Switch off the machine at the off switch.

INFORMATION

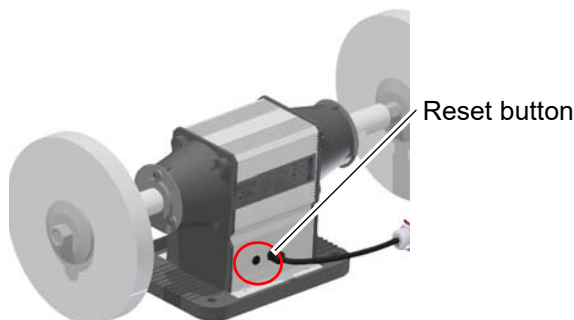
Your polishing machine is equipped with an emergency stop switch of stop category 0. This means that the power supply to the drive is switched off. Depending on the mass moment of inertia of the drive, the motor continues to rotate accordingly and runs down slowly in order to prevent the polishing machine from moving away from the surface or even being flung away. A controlled switch-off by braking does not take place. The lower the speed with coasting, the lower the moment of inertia.



4.3 Resetting the overcurrent protector

When the motor has been overloaded.

- Activate the overcurrent protector again. Press the reset button.



INFORMATION

Make sure that the polishing forces are not too large. The protection switch triggers before the three-phase motor stops due to overload.





5 Maintenance

In this chapter you will find important information about

- Inspection
- Maintenance
- Repair

of the polishing machine.

ATTENTION!

Properly performed regular maintenance is an essential prerequisite for

- operational safety,
- failure-free operation,
- a long working life of the polishing machine and
- the quality of the products which you manufacture.

Installations and equipment from other manufacturers must also be in good order and condition.



5.1 Safety

WARNING!

The consequences of incorrect maintenance and repair work may include:

- extremely serious injuries to those working on the polishing machine and
- damage to the polishing machine.

Maintenance and repair work on the polishing machine must be carried out by qualified technical personnel only.



5.1.1 Preparation

WARNING!

Only work on the polishing machine if it has been disconnected from the power supply.



5.2 Inspection and maintenance

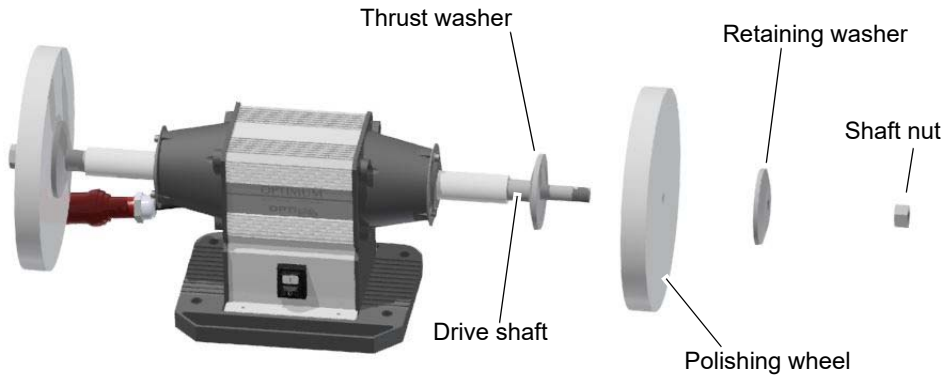
INFORMATION

The bearing is lifetime-lubricated. It is not necessary to lubricate it again.



5.3 Replacing a polishing wheel.

- Loosen the shaft nut.
- Hold the shaft with a wrench to loosen the nut. Make sure you use the correct direction to loosen the nut. Right side, right hand thread. Left side, left hand thread.
- Pull off the polishing wheel and the retaining washer from the shaft by hand.
- Check the new polishing wheel for visible damage prior to assembly.



5.4 Repair

Optimum Maschinen Germany GmbH accepts no liability nor does it guarantee against damage and operating malfunctions resulting from failure to observe these operating instructions.

For repairs, only use

- faultless and suitable tools only,
- original parts or parts from series expressly authorised by Optimum Maschinen Germany GmbH.

6 Appendix

6.1 Copyright

This document is protected by copyright. All derived rights are reserved, especially those of translation, re-printing, use of figures, broadcast, reproduction by photo-mechanical or similar means and recording in data processing systems, either partial or total.

Subject to technical changes without notice.

6.2 Liability claims/warranty

Besides the legal liability claims for defects of the customer towards the seller, the manufacturer of the product, OPTIMUM GmbH, Robert-Pfleger-Straße 26, D-96103 Hallstadt, does not grant any further warranties unless they are listed below or were promised as part of a single contractual provision.

- Liability or warranty claims are processed at OPTIMUM GmbH's discretion either directly or through one of its dealers.
Any defective products or components of such products will either be repaired or replaced by components which are free from defects. Title to replaced products or components is transferred to OPTIMUM Maschinen Germany GmbH.
- The automatically generated original proof of purchase which shows the date of purchase, the type of machine and the serial number, if applicable, is the precondition in order to assert liability or warranty claims. If the original proof of purchase is not presented, we are not able to perform any services.
- Defects resulting from the following circumstances are excluded from liability and warranty claims:
 - Using the product beyond the technical options and proper use, in particular due to overstraining of the machine.
 - Any defects arising by one's own fault due to faulty operations or if the operating manual



is disregarded.

- Inattentive or incorrect handling and use of improper equipment
- Unauthorized modifications and repairs
- Insufficient installation and safeguarding of the machine
- Disregarding the installation requirements and conditions of use
- atmospheric discharges, overvoltage and lightning strokes as well as chemical influences
- Neither are the following items covered by liability or warranty claims:
 - Wearing parts and components which are subject to normal and intended wear, such as V-belts, ball bearings, lighting, filters, seals, etc.
 - Non reproducible software errors
- Any services, which OPTIMUM GmbH or one of its agents performs in order to fulfil any additional warranty are neither an acceptance of the defects nor an acceptance of its obligation to compensate. These services neither delay nor interrupt the warranty period.
- The court of jurisdiction for legal disputes between businessmen is Bamberg.
- If any of the aforementioned agreements is totally or partially inoperative and/or invalid, a provision which nearest approaches the intent of the guarantor and remains within the framework of the limits of liability and warranty which are specified by this contract is deemed agreed.

6.3 Advice for disposal / Options of reuse:

Please dispose of your equipment in an environmentally friendly manner, by not placing waste in the environment but in a professional manner.

Please do not simply throw away the packaging and later the disused machine, but dispose of both in accordance with the guidelines laid down by your city council/local authority or by an authorised disposal company.

6.3.1 Decommissioning

CAUTION!

Immediately decommission used machines in order to avoid later misuse and endangering of the environment or of persons.

- **Unplug the power cord.**
- **Cut the connection cable.**
- **Remove all operating materials from the used device which are harmful to the environment.**
- **If applicable remove batteries and accumulators.**
- **Disassemble the machine if required into easy-to-handle and reusable assemblies and component parts.**
- **Dispose of machine components and operating fluids using the intended disposal methods.**



6.3.2 Disposal of new device packaging

All used packaging materials and packaging aids from the machine are recyclable and generally need to be supplied to the material reuse.

The packaging wood can be supplied to the disposal or the reuse.

Any packaging components made of cardboard box can be chopped up and supplied to the waste paper collection.

The films are made of polyethylene (PE) and the cushion parts are made of polystyrene (PS). These materials can be reused after reconditioning if they are passed to a collection station or to the appropriate waste management enterprise.

Only forward the packaging materials correctly sorted to allow direct reuse.



INFORMATION

Please take care in your interest and in the interest of the environment that all component parts of the machine are only disposed of in the intended and admitted way.



Please note that the electrical devices comprise a variety of reusable materials as well as environmentally hazardous components. Please ensure that these components are disposed of separately and professionally. In case of doubt, please contact your municipal waste management. If appropriate, call on the help of a specialist waste disposal company for the treatment of the material.

6.3.3 Disposal of electrical and electronic components

Please make sure that the electrical components are disposed of professionally and according to the statutory provisions.

The device is composed of electrical and electronic components and must not be disposed of as household waste. According to the European Directive regarding electrical and electronic used devices and the implementation of national legislation, used power tools and electrical machines need to be collected separately and supplied to an environmentally friendly recycling centre.



As the machine operator, you should obtain information regarding the authorised collection or disposal system which applies for your company.

Please make sure that the electrical components are disposed of professionally and according to the legal regulations. Please only throw depleted batteries in the collection boxes in shops or at municipal waste management companies.

6.4 Disposal through municipal collection facilities

Disposal of used electrical and electronic components
(Applicable in the countries of the European Union and other European countries with a separate collecting system for those devices).

The sign on the product or on its packing indicates that the product must not be handled as common household waste, but that it needs to be disposed of at a central collection point for recycling. Your contribution to the correct disposal of this product will protect the environment and the public health. Incorrect disposal constitutes a risk to the environment and public health. Recycling of material will help reduce the consumption of raw materials. For further information about the recycling of this product, please consult your District Office, municipal waste collection station or the shop where you have purchased the product.



6.5 Change information manual

Chapter	Short note	new version no.
3	Interdepartmental transport	1.0.1
4.1 ; 4.2 ; CE	EN ISO 16089:2016-06	1.0.2
7.5	Circuit diagram inserted	1.0.3
7.4 ; 3.6	Spare parts drawings A, B updated, Dimensions updated	1.0.4

6.6 Product follow-up

We are required to perform a follow-up service for our products which extends beyond shipment.

We would be grateful if you could send us the following information:

- Modified settings
- Any experiences with the polishing machine which might be important for other users.
- Recurring failures of the polishing machine.

GU35P_GB.fm

7 Ersatzteile - Spare parts

7.1 Ersatzteilbestellung - Ordering spare parts

Bitte geben Sie folgendes an - Please indicate the following :

- Seriennummer - Serial No.
- Maschinenbezeichnung - Machines name
- Herstellungsdatum - Date of manufacture
- Artikelnummer - Article no.

Die Artikelnummer befindet sich in der Ersatzteilliste. *The article no. is located in the spare parts list.* Die Seriennummer befindet sich am Typschild. *The serial no. is on the rating plate.*

7.2 Hotline Ersatzteile - Spare parts Hotline



+49 (0) 951-96555 -118

ersatzteile@stuermer-maschinen.de



7.3 Service Hotline



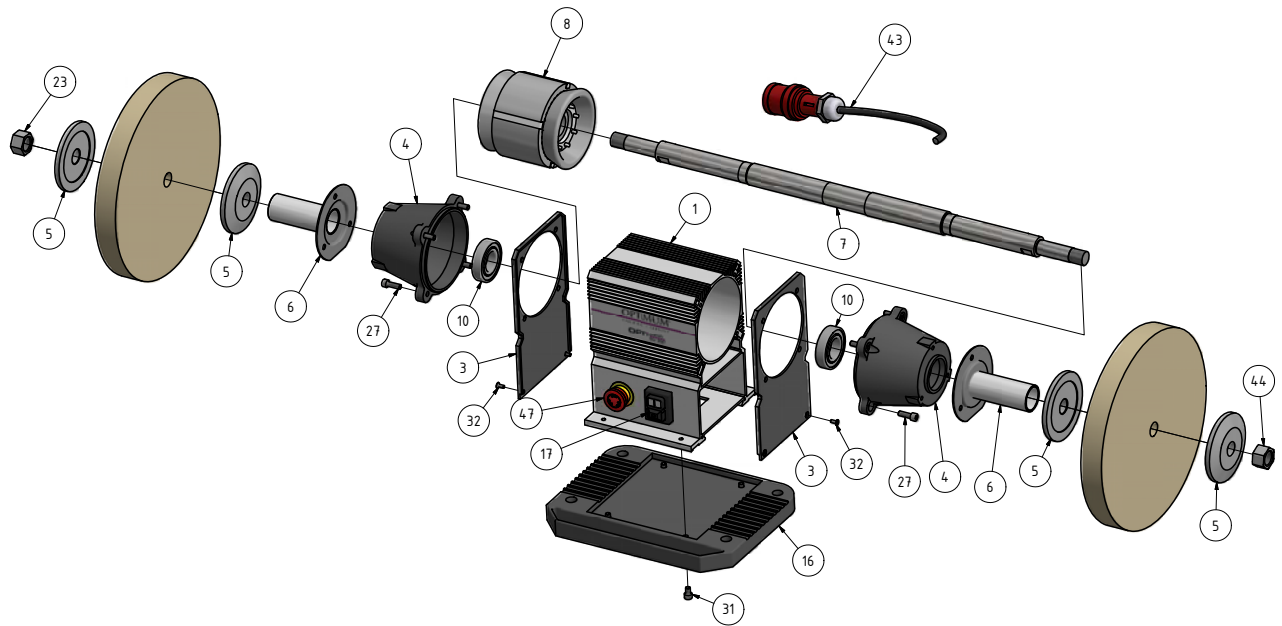
+49 (0) 951-96555 -100

service@stuermer-maschinen.de

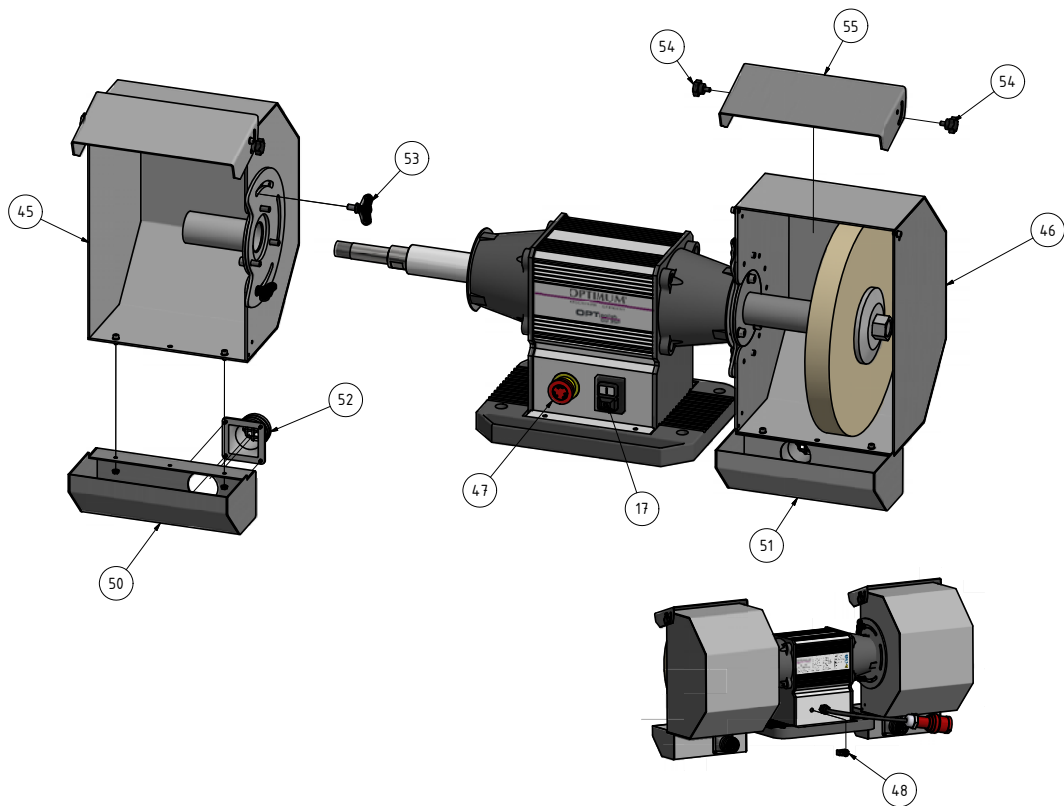


7.4 Ersatzteilzeichnungen - Spare part drawings

A

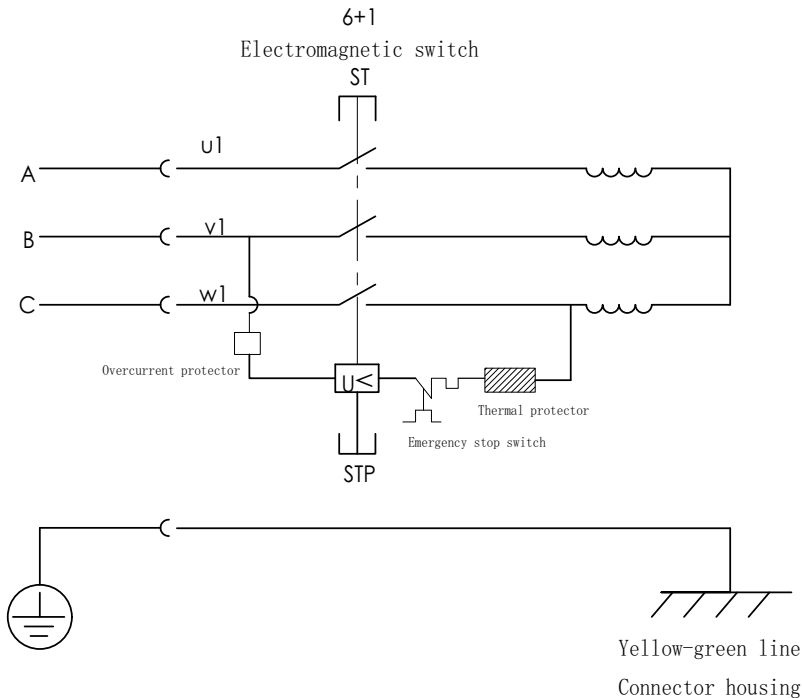


B



GU35P					
Pos.	Bezeichnung	Description	Menge Qty.	Grösse Size	Artikelnummer Item no.
1	Gehäuse	Housing	1		031015601
3	Abdeckung	Cover	2		031015603
4	Lagerflansch	Bearing flange	2		031015604
5	Gegendruckscheibe	Counterpressure disc	4		031015605
6	Wellenschutzabdeckung	Shaft protection cover	2		031015606
7	Welle	Shaft	1		031015607
8	Antriebsmotor	Drive motor	1	2.2 kW	031015608
10	Lager	Bearing	2	6207-2RZ	0310156010
16	Grundplatte	Base plate	1		0310156016
17	Ein / Aus Schalter	On / Off switch	1	KJD18 400V	
23	Wellenmutter links	Shaft nut left	1	Left hand thread M24x1.5	0310156023
31	Schraube	Screw	4	M8 x 12	
32	Senkkopfschraube	Screw	4	M5 x 12	
43	Anschlussstecker	Connection plug	1	400V	
44	Wellenmutter rechts	Shaft nut right	1	Right hand thread M24x1.5	0310156044
45	Abdeckhaube links komplett	Complete covering bonnet left	1	GU35P left	0310156045
46	Abdeckhaube rechts komplett	Complete covering bonnet right	1	GU35P right	0310156046
47	Not-Halt Schalter	Emergency stop switch	1		0310156047
48	Überstrom-Schutzeinrichtung	Overcurrent protector	1		0310156048
49	Thermische Schutzvorrichtung	Thermal protector	1		0310156049
50	Staubschale links	Dust tray left	1		0310156050
51	Staubschale rechts	Dust tray right	1		0310156051
52	Absaugstutzen	Suction socket	2		0310156052
53	Flügelschraube	Wing screw	4		0310156053
54	Rändelschraube	Knurled screw	4		0310156054
55	bewegliches Schutzblech	Movable guard	2		0310156055

7.5 Schaltplan (ohne Motorbremse) - Wiring diagram (without motor brake)





EC Declaration of Conformity

according to Machinery directive 2006/42/EC, Annex II 1.A

The manufacturer/ Optimum Maschinen Germany GmbH
Distributor: Dr.-Robert-Pfleger-Str. 26
D - 96103 Hallstadt, Germany

hereby declares that the following product

Product designation: Polishing machine

Type designation: GU35P

Polishing machine for private persons, as well as for craft and industrial plants which meets all the relevant provisions of the above mentioned Directive 2006/42/EC as well as the other directives applied (below) including their amendments in force at the time of declaration.

The following additional EU Directives have been applied: EMC Directive 2014/30/EU ; Restriction of the use of certain hazardous substances in electrical and electronic equipment 2015/863/EU

The safety objective meet the requirement of EC Directive 2006/42/EC.

The following harmonized standards were applied:

EN ISO 16089 Machine tools - Safety - Stationary grinding machines

EN 50370-1 Electromagnetic compatibility (EMC) - Product family standard for machine tools - Part 1: Emission

EN 60204-1 Safety of machinery - Electrical equipment of machines - Part 1: General requirements

EN ISO 13849 Safety of machinery - Safety-related parts of control systems

EN ISO 12100 Safety of machinery - General principles for design - Risk assessment and risk reduction (ISO 12100:2010)

Responsible for documentation: Kilian Stürmer

Tel.: +49 (0) 951 96555 - 800

Address: Dr.-Robert-Pfleger-Str. 26
D - 96103 Hallstadt, Germany

Kilian Stürmer
(CEO, General Manager)

Hallstadt, 2023-03-10

