

Instruction Manual

— Mobile sand-blasting unit

— MSSG 105 A



MSSG 105 A

MSSG 105 A

Imprint

Product identification

Mobile sand-blasting unit	Item number
MSSG 105 A	6204030

Manufacturer

Stürmer Maschinen GmbH
Dr.-Robert-Pfleger-Str. 26
D-96103 Hallstadt

Fax: 0049 (0) 951 96555 - 55
E-Mail: info@unicraft.de
Internet: www.unicraft.de

Information on the operating instructions

Original operating instructions
according to DIN EN ISO 20607:2019

Edition: 23.08.2021
Version: 1.05
Language: english

Author: MS

Copyright information

Copyright © 2021 Stürmer Maschinen GmbH, Hallstadt, Germany.

The contents of these operating instructions are the sole property of the company Stürmer. Passing on and reproduction of this document, exploitation and communication of its contents are prohibited unless expressly permitted. Contraventions obligate to compensation for damages.

Technical changes and errors excepted.

Contents

1 Introduction	3
1.1 Copyright	3
1.2 Customer service	3
1.3 Limitation of liability	3
2 Safety	3
2.1 Symbol explanation	3
2.2 Obligations of the operating company	4
2.3 Requirements to staff	4
2.4 Personal protective equipment	5
2.5 General Safety Instructions	5
2.6 Safety labels	6
2.7 Safety data sheets	6
3 Intended use	6
3.1 Predictable misuse	6
3.2 Residual risks	6
4 Technical Data	7
4.1 Type plate	7
5 Transport, packaging, storage	7
6 Description of the device	8
6.1 Scope of delivery	8
7 Assembly and connection	9
7.1 Assembly	9
7.2 Compressed air connection	10
8 Operation	10
9 Care, maintenance and repair	12
9.1 Care through cleaning	12
10 Troubleshooting	12
11 Disposal, recycling of used devices	13
11.1 Decommission	13
11.2 Disposal of electrical equipment	13
11.3 Disposal via municipal collection points	13
12 Spare parts	13
12.1 Ordering spare parts	13
12.2 Spare parts drawing MSSG 105 A	14
13 Electrical circuit diagram	14
14 EC-Declaration of Conformity	15

1 Introduction

You have made a good choice by purchasing the UNICRAFT mobile sand-blasting unit.

Read the operating manual thoroughly before commissioning the device.

It gives you information about the proper commissioning, intended use and safe and efficient operation and maintenance of your Mobile sand-blasting unit.

The operating manual is part of the Mobile sand-blasting unit. Always keep this operating manual in the location where your Mobile sand-blasting unit is being operated. All local accident prevention regulations and general safety instructions for the operating range of your Mobile sand-blasting unit must also be complied with.

1.1 Copyright

The contents of these instructions are copyright. They may be used in conjunction with the operation of the Mobile sand-blasting unit. Any application beyond those described is not permitted without the written approval of Stürmer GmbH.

We are claiming branded-, patent and design rights to protect our products, if this is possible in individual cases. We vigorously oppose any infringement of our intellectual property.

1.2 Customer service

Please contact your dealer if you have any questions about your product or for technical information. They will be happy to help you with expert advice and information.

Germany:

Stürmer Maschinen GmbH
Dr.-Robert-Pfleger-Str. 26
D-96103 Hallstadt

Repair service:

Fax: 0049 (0) 951 96555-111
E-Mail: service@stuermer-maschinen.de
Internet: www.unicraft.de

Spare parts orders:

Fax: 0049 (0) 951 96555-119
E-Mail: ersatzteile@stuermer-maschinen.de

We are always interested in valuable experience and knowledge gained from using the application-which then could be shared and be valuable to develop our products even further.

1.3 Limitation of liability

All information and notes in these operating instructions were summarised while taking applicable standards and rules, the state-of-the-art technology and our long-term knowledge and experiences into consideration.

In the following cases the manufacturer is not liable for damages:

- Non-observance of the operating instructions,
- Inappropriate use
- Use of untrained staff,
- Unauthorised modifications
- Technical changes,
- Use of not allowed spare parts.

The actual scope of delivery may deviate from the explanations and presentations described here in case of special models, when using additional ordering options or due to latest technical modifications.

The obligations agreed in the delivery contract, the general terms and conditions as well as the delivery conditions of the manufacturer and the legal regulations valid at the time of the conclusion of the contract apply

2 Safety

This section provides an overview of all important safety packages for the protection of operating personnel as well as for safe and fault-free operation. Other task-based safety notes are included in the paragraphs of the individual phases of life.

2.1 Symbol explanation

Safety instructions

The safety notes in these operating instructions are highlighted by symbols. The safety notes are introduced by signal words which express the concern of the risk.



DANGER!

This combination of symbol and signal words indicates an imminently dangerous situation which may lead to death or severe injuries if they are not avoided.



WARNING!

This combination of symbol and signal words indicates a possibly dangerous situation which may lead to death or severe injuries if they are not avoided.



ATTENTION!

This combination of symbol and signal word indicates a possibly dangerous situation which may result mild or minor injuries.



CAUTION!

This combination of symbol and signal word indicates to a potentially dangerous situation, which can lead to material and environmental damage if not avoided.



NOTE!

This combination of symbol and signal words indicates a possibly dangerous situation which may lead to property and environmental damages if they are not avoided.

Tips and recommendations



Tips and recommendations

This symbol highlights useful tips and recommendations as well as information for an efficient and trouble-free operation.

It is necessary to observe the safety notes written in these operating instructions in order to reduce the risk of personal injuries and damages to property.

2.2 Obligations of the operating company

The operator is the person who operates the machine for commercial or economic purposes himself or leaves it to a third for use or application and bears the legal product responsibility for the protection of the user, personnel or third during operation.

If the Mobile sand-blasting unit is used for commercial purposes, the operating company of the Mobile sand-blasting unit must comply with the legal working safety regulations. Therefore, the safety notes in this operating manual, as well as the safety, accident prevention and environment protection regulations applying for the area of application of the Mobile sand-blasting unit must be met. The following applies in particular:

- The operating company must be informed about the applying industrial safety regulations and further analyse hazards resulting from the special working conditions at the place of use Mobile sand-blasting unit. She must implement these in form of operating manuals for the operation of the Mobile sand-blasting unit.

- During the entire lifetime of the Mobile sand-blasting unit, the operating company must verify whether the operating manuals prepared by her correspond to the current status of the regulations, and must adapt these if necessary.
- The operating company must unambiguously regulate and determine the responsibilities for installation, operation, troubleshooting, maintenance and cleaning.
- The operating company must ensure that all persons who work with the Mobile sand-blasting unit, have read and understood this manual. Furthermore she must instruct the staff in regular intervals and inform them about the hazards.
- The operator must provide the necessary protective equipment to the staff and order the use of the necessary protective equipment in a binding way.

Furthermore the operating company is responsible to keep the Mobile sand-blasting unit always in a technically flawless state. Thus, the following applies:

- The operator must ensure that the maintenance intervals described in this manual are kept.
- The operator must have all safety devices checked regularly for their good working order and their integrity.

2.3 Requirements to staff

The different tasks described in this manual represent different requirements to the qualification of the persons entrusted with these tasks



WARNING!

Danger due to insufficient qualification of persons!

Insufficiently qualified persons cannot estimate the risks while using the device and expose themselves and others to the danger of severe or lethal injuries.

- Have all works only performed by qualified persons.
- Keep insufficiently qualified persons out of the working area.

Only persons reliable working procedures can be expected from, are allowed to perform all works. Persons the responsiveness of which is affected by e. g. drugs, alcohol or medication, are not allowed to work with the machine.

The qualifications of the personnel for the different tasks are mentioned below:

Operator:

The operator is instructed by the operating company about the assigned tasks and possible risks in case of improper behaviour. Any tasks which need to be performed beyond the operation in the standard mode must only be performed by the operator if it is indicated in these instructions and if the operating company expressly commissioned the operator.

Qualified personnel:

Due to their professional training, knowledge and experience as well as their knowledge of relevant regulations the specialist staff is able to perform the assigned tasks and to recognise and avoid any possible dangers themselves.

Manufacturer:

Certain works may only be performed by specialist personnel of the manufacturer. Other personnel is not authorized to perform these works. Please contact our customer service for the execution of all arising work.

2.4 Personal protective equipment

The personal protective equipment serves to protect persons against impairments of safety and health while working. The staff member has to wear personal protective equipment while performing different tasks on and with the machine which are indicated in the individual paragraphs of these instructions.

The personal protective equipment is explained in the following paragraph:



Head protection

The industrial helmet protects the head against falling objects and hitting on fixed objects.



Ear protection

The hearing protection protects against damages of hearing due to noise.



Respiratory protection

The respiratory protection protects the respiratory tract against the ingress of dust and small foreign bodies.



Use safety glasses!

The protective goggles serve to protect the eyes against parts flying off.



Protective gloves

The protective gloves serve to protect the hands against sharp components as well as against friction, abrasions or deep injuries.



Safety boots

The safety boots protect the feet against crushes, falling parts and slipping over on slippery underground.



Protective clothes

Protective clothes are made of a tightly fitted fabric without the protruding parts of low tear strength.

2.5 General Safety Instructions

Please note the following:

- Observe the statutory accident prevention regulations as well as the other generally recognised safety, occupational health and safety rules and the accident prevention regulations for compressed air-operated work equipment.
- Do not operate the Mobile sand-blasting unit in a damp or wet environment.
- Never operate or store the Mobile sand-blasting unit near open fire or heat sources!
- Always keep the Mobile sand-blasting unit and its working environment clean.
- Ensure sufficient lighting.
- Never direct the Mobile sand-blasting unit at people, animals or your own body parts. Sandblasting particles can cause serious injuries.
- Keep children and unauthorised persons away from the Mobile sand-blasting unit.
- Never fill the container with abrasive while the compressed air line is still connected to the sMobile sand-blasting unit.
- Make sure that the sand flow control valve is in the OFF position before connecting the compressed air line to the Mobile sand-blasting unit.
- Always disconnect the Mobile sand-blasting unit from the power supply and from the compressed air source before carrying out adjustment, cleaning and repair work.
- Constructional and technical changes to the Mobile sand-blasting unit are prohibited! Stürmer Maschinen GmbH accepts no liability for any damage or accidents caused by such modifications.



Wear protective goggles

Always operate the Mobile sand-blasting unit with eye protection. Sand, rust, paint, etc. can bounce back from the blasted surface and cause serious injury.



Wear protective gloves

Always operate the Mobile sand-blasting unit with protective gloves. Sand particles move at high speed. Direct contact with hands and other parts of the skin can cause severe abrasion.



Wear breathing protection

Always operate the sandblasting unit with a breathing mask. Inhalation of dust and other airborne particles can cause a serious health hazard.

2.6 Safety labels

Various safety markings are attached to the Mobile sand-blasting unit which must be observed and followed (Fig. 1).



Fig. 1: Safety labels

The safety markings must not be removed. Damaged or missing safety markings can lead to mishandling, personal injury and damage to property. They must be replaced immediately. If the safety markings are not visible and understandable at first glance, the machine must be taken out of operation until new safety markings have been applied.

2.7 Safety data sheets

You can obtain safety data sheets for dangerous goods from your specialist dealer or by calling +49 (0) 951 / 96555-0.

Specialist dealers can find safety data sheets in the download area of the partner portal.

3 Intended use

The Mobile sand-blasting unit MSSG 105 A is used for blasting work in places that are difficult to access and on large objects with metal, wood and other surfaces. The sandblasting unit is also used to create a well adhering surface. The workpiece must be well fixed and must not be able to change its position during processing. The mobile

sand-blasting unit may only be operated by persons who have been instructed in this product.

3.1 Predictable misuse

- Processing of loose objects.
- Fixation of the workpiece by hand.

3.2 Residual risks

- Inhalation of substances hazardous to health due to insufficient respiratory protection.
- Hearing damage due to inadequate hearing protection when operating compressors.
- Leakage of pipes, especially when exposed to draught.
- Leakage of seals due to wear.
- Tipping over of the Mobile sand-blasting unit due to insufficient protection.
- Lines can act as tripping hazards.
- Damage to the workpiece due to lack of experience with sandblasting.

4 Technical Data

Model	MSSG 105 A
Air requirement average, approx.	420 l/min
Air requirement maximum under load, approx.	616 l/min
Working pressure	5,5 – 7,9 bar
Inlet pressure max.	8,6 bar
Supply voltage	230 V / 50 Hz
Extraction unit current draw	1200 W
Connecting thread	Quick Connector
Nozzle diameter	7 mm
Abrasive grain size (recommended)	0,18 – 0,25 mm
Abrasive grain size (maximal)	0,15 - 0,45 mm
Max. weight of blast media	9-16 kg
Container volume	106 Liter
Diameter of hand hole	20 mm
Sand Hose length	2,5 m
Sand Hose inner diameter	12 mm
Compressed air hose length	2,5 m
Air Hose inner diameter	9 mm
Suction hose inner diameter	35 mm
Suction hose outer diameter	48 mm
Dimensions (LxBxH) ca.	612x404x1040 mm
Weight ca.	27 kg

4.1 Type plate


Mobiles Sandstrahlgerät mit Absaugung		Mobile sand-blasting unit with extraction unit	
Typ Type	MSSG 105 A	Serien-Nr. Serial no.	
Artikel-Nr. Item no.	6204030	Baujahr Year of manufacture	Monat/Jahr month/year
Luftbedarf Air requirement	420 l/min	Netzanschluss Power connection	230V / 50 Hz
Gewicht Weight	27 kg	Arbeitsdruck Working pressure	5,5 - 7,9 bar
Motorleistung Absaugung Motor power of extraction unit	1200 W		
		Stürmer Maschinen GmbH Dr.-Robert-Pfleger-Str. 26, 96103 Hallstadt Deutschland / Germany	

Fig. 2: Type plate MSSG 105 A

5 Transport, packaging, storage

Delivery

Check the Mobile sand-blasting unit after delivery for visible transport damage. If you discover any damage, report it immediately to the transport company or the dealer.



NOTE!

Protect the Mobile sand-blasting unit from moisture.

Transport



CAUTION!

Injuries caused by parts falling over or off a forklift, pallet truck or transport vehicle.

Only use means of transport that can carry the total weight and are suitable for it.

Improper transport of individual devices, unsecured devices stacked on top of each other or next to each other in packed or already unpacked condition is accident-prone and can cause damage or malfunctions for which we do not grant any liability or guarantee.

Transport the scope of delivery secured against shifting or tilting with a sufficiently dimensioned industrial truck to the installation site.

General risks during internal transport



CAUTION: DANGER OF TIPPING!

The device may be lifted unsecured by a maximum of 2cm.

Employees must be outside the danger zone, the reach of loads. Warn employees and, if necessary, advise employees of the hazard.

Devices may only be transported by authorized and qualified persons. Act responsibly during transport and always consider the consequences. Refrain from daring and risky actions.

Gradients and descents (e.g. driveways, ramps and the like) are particularly dangerous. If such passages are unavoidable, special caution is required.

Before starting the transport check the transport route for possible danger points, unevenness and disturbances as well as for sufficient strength and load capacity.

Danger points, unevenness and disturbance points must be inspected before transport. The removal of danger

spots, disturbances and unevenness at the time of transport by other employees leads to considerable dangers.

Careful planning of internal transport is therefore essential.

Packaging

All used packaging materials and packaging aids are recyclable and should be taken to a materials recycling depot to be disposed of.

The delivery packaging is made of cardboard, so please dispose carefully by having it chopped up and given to the recycling collection. The film is made of polyethylene (PE) and the cushioned parts of polystyrene (PS).

These materials should be taken to a collection point for recyclable materials or to the local waste disposal company.

Storage

The Mobile sand-blasting unit must be cleaned thoroughly before storing it in a dry, clean and frost-free environment.

6 Description of the device

Illustrations in this operating manual may differ from the original.

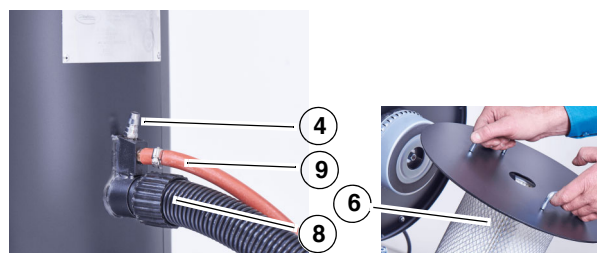


Fig. 3: Mobile sand-blasting unit MSSG 105 A

- 1 Exhaust air outlet on container cover
- 2 ON/OFF switch
- 3 Tanks
- 4 Compressed air connection from compressor
- 5 Blasting agent line connection
- 6 Filters
- 7 Swivel castor
- 8 Suction hose
- 9 Compressed air hose
- 10 Blasting gun with brush and suction
- 11 Adjusting screw for nozzle position
- 12 Blasting agent line
- 13 Brush
- 14 Transport handle

6.1 Scope of delivery

- Sandblasting gun with brush
- Ceramic nozzle 7 mm
- Compressed air hose Length 2.5 m, inside Ø 9 mm
- Suction hose Length 2.5 m, inside Ø 12 mm
- Suction hose Length 2.5 m, inside Ø 35 mm
- Plug nipples

7 Assembly and connection



Wear protective gloves!



Wear protective goggles!



Wear protective work clothing!

7.1 Assembly

Before commissioning, some components must be mounted on the Mobile sand-blasting unit.

Components are delivered in a carton:

- Container with suction hose, compressed air hose and abrasive hose
- Blasting gun
- Wheels
- Axis
- Handle
- Operating Instructions

Step 1: Open carton, remove contents and remove packing material.

Step 2: Open the lid of the container and remove the suction hose, compressed air hose and blasting agent hose.



Fig. 4: Remove hoses

Step 3: Insert the axle into the axle bearing and mount the wheels on the axle. Screw the castors to the roller carriers.



Fig. 5: Fitting wheels and castors

Step 4: Screw the handle to the container.

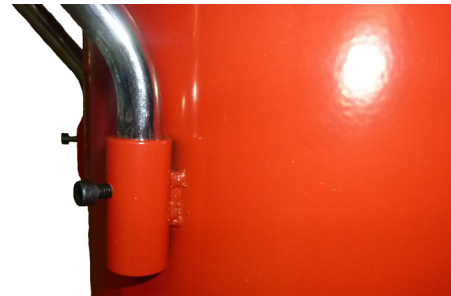


Fig. 6: Screw the handle to the container

Step 5: Connect the hoses to the container and to the blasting pistol and tighten the hose clamps or the union nuts (suction hose) (Fig. 7)

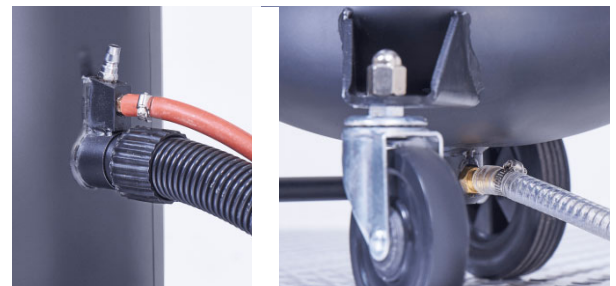


Fig. 7: Connect hoses to container and blasting gun

7.2 Compressed air connection



DANGER!

Moisture in the compressed air impairs the flow of the abrasive and can lead to lumps and blockages of valves and lines.

To operate the Mobile sand-blasting unit you need a compressor with sufficient filling capacity (approx. 420 litres/min, max. 616 litres/min, working pressure 5.5 to 7.9 bar). The generated air must be cleaned, dry (free of condensate) and oil-free.

Step 1: Connect the compressed air hose from the compressor to the compressed air connection on the sandblasting machine container.

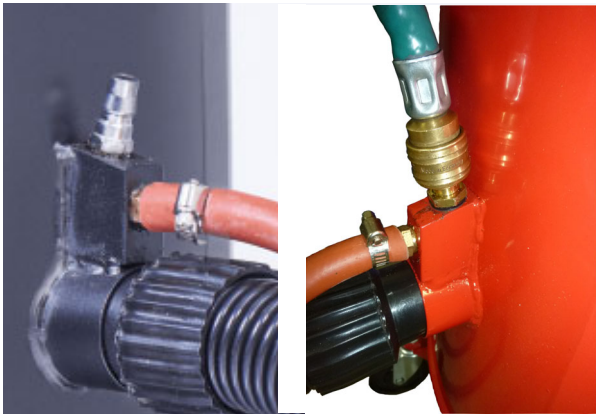


Fig. 8: Connect the compressed air hose to the container

Step 2: Set the desired working pressure on the compressor. Make sure that the maximum pressure (see chapter "Technical Data") is not exceeded.

8 Operation



WARNING!

Risk to life!

There is danger to life if you do not follow these rules.

- Never carry out work with the Mobile sand-blasting unit if you are under the influence of alcohol, drugs or medication and/or if you are overtired or suffer from concentration disorders.
- The Mobile sand-blasting unit may only be operated by one person. Other persons must stay away from the working area during the work.



CAUTION!

HEALTH HAZARD.

Inhalation of blasting material and abrasion may cause lung damage by quartz dust! Possible formation of pneumoconiosis and silicosis. For further information see

<https://en.wikipedia.org/wiki/silicose>

Inhaling substances with particle sizes below 5 μm is particularly dangerous!

Never use abrasives with particle sizes smaller than 0.12 mm.

Always wear breathing protection!



Wear protective goggles!



Wear breathing protection!



Wear protective gloves!



Wear protective work clothing!



NOTE!

Before operating the Mobile sand-blasting unit for the first time, carry out the following points.

- Check all connections and tighten them if necessary.
- Check the tank and all lines for leaks.



DANGER!

The sand jet must always be directed away from the operator.



DANGER!

Only use abrasives with a maximum grain size of 0.18 mm. Larger particles clog the valve and cause a malfunction.



DANGER!

The workpiece must be clean and dry.



NOTE!

The distance of the blasting gun to the object plays an important role. The distance must be selected so that the brushes touch the workpiece.

The sandblasting unit may only be operated in a dry, well-ventilated environment and on level, solid ground. It must be ensured that there is sufficient freedom of movement and adequate lighting for working.

- Step 1: Select suitable blasting medium.
- Step 2: The workpiece must be free of oil, grease and moisture. If necessary, clean the workpiece.
- Step 3: Check that the compressed air line coming from the compressor is separated from the Mobile sand-blasting unit. Open the container lid and fill max. 9-16 kg of blasting agent into the container. Close the container and insert the mains plug into the socket.
- Step 4: Connect the compressed air source to the sand-blasting unit.
- Step 5: Start the compressor and set the desired working pressure on the compressed air fitting of the compressor. Make sure that the maximum pressure is not exceeded! Depending on the sensitivity of the material, set a lower working pressure accordingly.
- Step 6: Put on breathing protection and protective gloves.
- Step 7: Open the compressed air valve on the compressor
- Step 8: Turn on the on/off switch on the lid of the Mobile sand-blasting unit.
- Step 9: Place the abrasive gun on the workpiece so that the brush touches the surface.



Fig. 9: Application of the blasting pistol

Step 10: Guiding the blasting agent gun:

One hand on the gun handle, the other hand on the brush housing (Fig. 9). Slowly open the blasting agent control valve until the desired flow rate is reached. Keep the nozzle at an optimum distance from the workpiece. The closer to the surface, the finer the pattern.



DANGER!

The brush is intended to prevent the blasting agent from escaping outside and being lost, but to ensure that it is returned to the container by the suction unit. Depending on the shape of the workpiece or at corners and edges, make sure that the brush covers the surface as completely as possible. The brush has no function when treating the surface!

- Step 11: By adjusting the position of the nozzle with the adjusting screw on the head of the blasting gun, the size of the jet can be varied.
- Step 12: When the work is finished, close the valve of the blasting gun and switch off the Mobile sand-blasting unit (set switch to position 0). Switch off the compressor and disconnect the compressed air line from the Mobile sand-blasting unit.
- Step 13: Disconnect the power plug of the sandblasting machine from the socket. Open the lid of the sandblasting machine, pull out the filter a little and tap the blasting material from the filter. After longer use (one hour or more) clean the filter with compressed air, wear eye and breathing protection!



Fig. 10: Filter

- Step 14: At the end of the working day, remove the abrasive from the container. Store the abrasive and the Mobile sand-blasting unit in a safe and dry place.

9 Care, maintenance and repair



DANGER!

Disconnect the Mobile sand-blasting unit from the compressed air supply and the mains before carrying out any maintenance, servicing or cleaning work. Maintenance and repair work may only be carried out by qualified personnel.

9.1 Care through cleaning

The Mobile sand-blasting unit must always be kept in a clean condition.



Wear protective gloves!



NOTE!

Never use harsh cleaning agents for any cleaning work. This can lead to damage or destruction of the Mobile sand-blasting unit.

Clean the tool regularly from dirt. Regular cleaning makes it easier to work with the pneumatic tool.

Clean all plastic parts with a soft, damp cloth and a little neutral cleaner.

Check the quality of the blasting medium regularly. In case of unsuitable grain size, wear and tear or soiling replace the blasting agent.

Check the screw connections for a tight and tight fit and retighten them, if necessary.

Store the tool clean and dry.

If the Mobile sand-blasting unit does not function properly, contact a specialist dealer or our customer service. The contact details can be found in chapter 1.2 Customer service.

All protective and safety devices must be reinstalled immediately after repair and maintenance work has been completed.

10 Troubleshooting



DANGER!

If one of the following errors occurs, stop working with the Mobile sand-blasting unit immediately. Serious injury or damage to the tool may occur. All repair or replacement work must only be carried out by qualified and trained personnel. The tool must first be disconnected from the compressed air source and the power supply.

Fault	Possible Cause / Remedy
Poor abrasive flow	<ol style="list-style-type: none"> Working pressure too low. Check compressed air supply. At least 5.5 bar required. Dirty or clogged filter. Clean the filter Blasting medium clumps together. Compressed air too moist. Make sure that a suitable water separator is installed at the compressed air source. Nozzle clogged. Blow the nozzle freely (wear protective goggles).
Poor blasting result	<ol style="list-style-type: none"> Compressed air too moist. Make sure that a suitable water separator is installed at the compressed air source. Blasting medium has uneven grain sizes and/or is worn out. Replace the abrasive. The nozzle is worn out and has to be replaced.
Poor abrasive extraction	<ol style="list-style-type: none"> Dirty or clogged filter. Clean the filter. Leaking or clogged suction pipe. Check lines for damage and/or clogging. Clean or replace the lines. Damaged seals. Replace the seals.
Blasting medium is blown through the brush	<ol style="list-style-type: none"> Working pressure too high. Check compressed air supply. Max. working pressure Max. working pressure 7,9 bar. Leaking or blocked suction pipe. Check lines for damage and/or blockage. Clean or replace the lines. Brush damaged. Replace the brush.

11 Disposal, recycling of used devices

In your own interests and in the interests of the environment, please ensure that all components of the equipment are disposed of in the proper and authorized way.

11.1 Decommission

Disused devices must be taken out of service immediately in order to avoid later misuse and endangering the environment or people.

Step 1: Remove all environmentally hazardous fluids from the Mobile sand-blasting unit.

Step 2: If necessary, disassemble the Mobile sand-blasting unit into manageable and usable assemblies and components.

Step 3: The product components and operating materials must be routed through the appropriate disposal routes.

11.2 Disposal of electrical equipment

Electrical equipment contains a large number of recyclable materials and environmentally harmful components.

These components must be disposed of separately and properly. In case of doubt, contact the municipal waste disposal service.

If necessary, use the services of a specialized waste disposal company for processing.

11.3 Disposal via municipal collection points

Disposal of used electrical and electronic equipment (Applicable in the countries of the European Union and other European countries with a separate collection system for these appliances).



The symbol on the product or its packaging indicates that this product should not be treated as normal household waste, but must be returned to a collection point for the recycling of electrical and electronic equipment. By helping to properly dispose of this product, you are protecting the environment and the health of others. Environment and health are endangered by improper disposal. Material recycling helps to reduce the consumption of raw materials. For more information about recycling this product, contact your local community, municipal waste management, or the shop where you purchased the product.

12 Spare parts



DANGER!

Risk of injury through use wrong spare parts!

The use of incorrect or faulty replacement parts can be dangerous to the operator and cause damage and malfunction.

- Only original spare parts from the manufacturer or replacement parts approved by the manufacturer must be used.
- In case of doubt, always contact the manufacturer



Tips and recommendations

Using non-approved spare parts voids the manufacturer's warranty.

12.1 Ordering spare parts

The spare parts can be obtained from the dealer. Specify the following key data when inquiring or ordering spare parts:

- Device type
- Item number
- Position number
- Construction year
- Amount
- Desired shipping method (post, freight, sea, air, express)
- Delivery address

Spare parts orders without details given above can not be considered. If the shipping method is missing, shipping will be at the discretion of the supplier. Details of the device type, item number and year of construction can be found on the type plate, which is attached to the device.

Example

The Suction hose for the Mobile sand-blasting unit MSSG 105 A must be ordered. The Suction hose has the number 1 in the spare parts drawing 1.

By ordering spare parts, send a copy of the spare parts drawing (1) with the marked part (Suction hose) and marked position number (1) to the dealer and provide the following information:

- Type of device: **Mobile sand-blasting unit MSSG 105 A**
- Item number: **6204030**
- Position number: **1**

12.2 Spare parts drawing MSSG 105 A

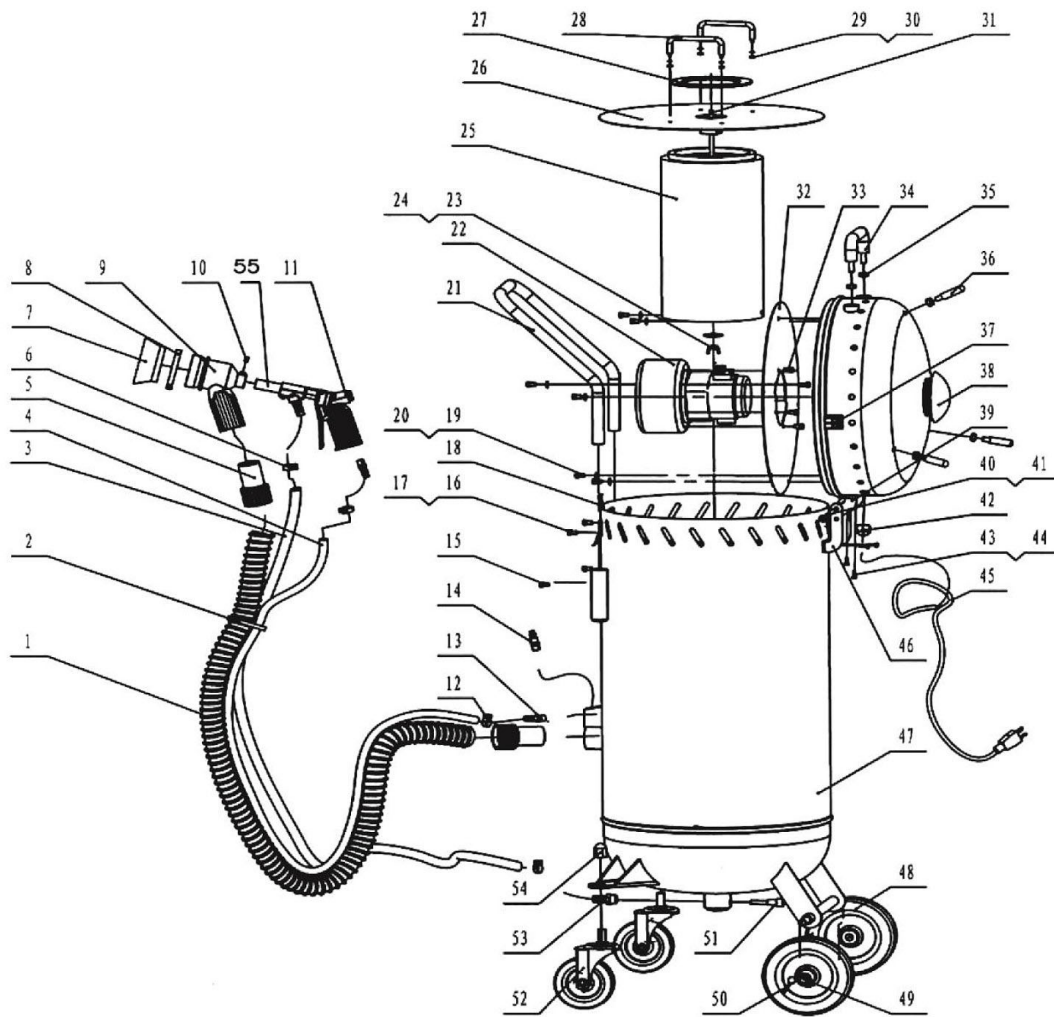


Fig. 11: Spare parts drawing

13 Electrical circuit diagram

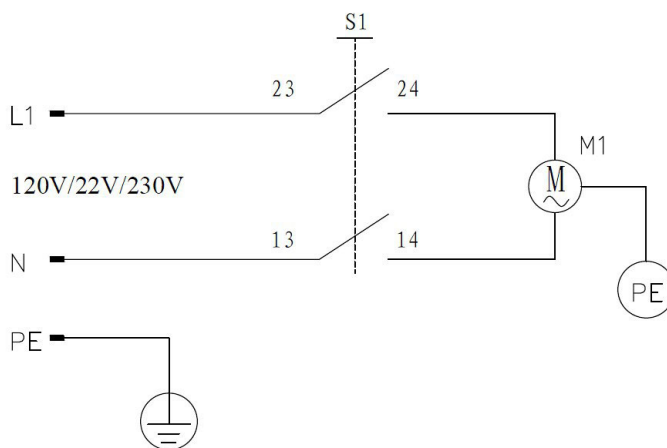


Fig. 12: Electrical circuit diagram

14 EC-Declaration of Conformity

According to machine directive 2006/42/EG Annex. II 1.A

Manufacturer/distributing company: Stürmer Maschinen GmbH
Dr.-Robert-Pfleger-Str. 26
D-96103 Hallstadt

hereby declares that the following product

Product group: Unicraft® Werkstatttechnik
Machine type: Mobile sand-blasting unit
Designation of the machine: MSSG 105 A
Item number: 6204030
Serial number*: _____
Year of manufacture *: 20__

* please fill in according to the information on the type plate

due to its design and construction, as well as in the version marketed by us, complies with the relevant, basic safety and health requirements of the above-mentioned directive and the following EU directives.

Relevant EU Directives: 2014/30/EU EMC Directive
2012/19/EU WEEE-Directive

The following harmonized standards were applied:

EN 60204-1:2006+A1:2009 Safety of machinery - Electrical equipment of machines -
Part 1: General requirements

Responsible for documentation: Kilian Stürmer, Stürmer Maschinen GmbH,
Dr.-Robert-Pfleger-Str. 26, D-96103 Hallstadt

Hallstadt, 31.03.2020



Kilian Stürmer
Manager



