



Woodworking machinery at its best!

DUST & CHIP EXTRACTOR OWNERS MANUAL

MODELS: W792, W792/3, W792CF, W792/3CF

A 16 amp fixed electric supply is required to run this machine.

Recommended breaker size:
16 Amps (Type C)



Charnwood, Cedar Court, Walker Road,
Hilltop Industrial Estate, Bardon Hill, Leicestershire, LE67 1TU

Tel. 01530 516 926
email: sales@charnwood.net website: www.charnwood.net

GENERAL SAFETY RULES



WARNING: Do not attempt to operate the machine until you have read thoroughly and understood completely all instructions, rules, etc. contained in this manual. Failure to comply may result in accidents involving fire, electric shock, or serious personal injury. Keep this owner's manual and review frequently for continuous safe operation.

1. Know your machine. For your own safety, read the owner's manual carefully. Learn its application and limitations, as well as specific potential hazards pertinent to this machine.
2. Make sure all tools are properly earthed.
3. Keep guards in place and in working order. If a guard must be removed for maintenance or cleaning, make sure it is properly replaced before using the machine again.
4. Remove adjusting keys and spanners. Form a habit of checking to see that the keys and adjusting spanners are removed from the machine before switched it on.
5. Keep your work area clean. Cluttered areas and workbenches increase the chance of an accident.
6. Do not use in dangerous environments. Do not use power tools in damp or wet locations, or expose them to rain. Keep work areas well illuminated.
7. Keep children away. All visitors should be kept a safe distance from the work area.
8. Make workshop childproof. Use padlocks, master switches and remove starter keys.
9. Do not force the machine. It will do the job better and be safer at the rate for which it is designed.
10. Use the right tools. Do not force the machine or attachments to do a job for which they are not designed. Contact the manufacturer or distributor if there is any question about the machine's suitability for a particular task.
11. Wear proper apparel. Avoid loose clothing, gloves, ties, rings, bracelets, and jewellery which could get caught in moving parts. Non-slip footwear is recommended. Wear protective hair covering to contain long hair.
12. Always use safety glasses. Normal spectacles only have impact resistant lenses. They are not safety glasses.
13. Do not over-reach. Keep proper footing and balance at all times.
14. Maintain the machine in good condition. Keep the machine clean for best and safest performance. Follow instructions for lubrication and changing accessories.
15. Disconnect the machine from power source before servicing and when changing the blade.
16. Never leave the machine running unattended. Turn the power off. Do not leave the machine until it comes to a complete stop.
17. Do not use any power tools while under the effects of drugs, alcohol or medication.
18. Always wear a face or dust mask if operation creates a lot of dust and/or chips. Always operate the tool in a well ventilated area and provide for proper dust removal. Use a suitable dust extractor.

ADDITIONAL RULES FOR DUST EXTRACTORS

1. Dust extractors are frequently moved around the workshop. Make sure that mains cables and extractor hoses are positioned in such a way that they do not present a trip hazard.
2. Do not pick up pieces of metal or chunks of wood.
3. Switch off and unplug the extractor before removing the collection bag and/or filter.
4. Do not allow the collection bag to become over full.
5. When necessary, wash, thoroughly rinse and completely dry the filter bag. Using a wet or damp filter bag will reduce its efficiency as it will quickly become clogged.
6. Dispose of waste in accordance with local regulations.
7. DO NOT use without the filter bag and collection bag in place.
8. Keep hair, loose clothing, fingers, and all parts of the body away from the end of the suction hose.

W792 Specification

Motor (Available in 240v single phase or 415v 3 phase)	2200w (3hp)
Recommended breaker size (MCB)	16 Amps (Type C)
Airflow (Without Bag)	3450m ³ /hour (2600cfm)
Inlet Diameter	1 x 150mm or 3 x 100mm
Bag capacity	2 x 148 Litres
Maximum continuous run time	8 hours
Sound Level	85 dB (A)
Dimensions (WxDxH)	1560mm x 550mm x 1920mm
Weight (Gross / Net)	80kg / 75kg
Rating	Industrial
Warranty	5 Years



Risk of Injury!
Never reach into
the running fan



Wear Eye
Protection



Wear Ear
Protection
During Prolonged Use

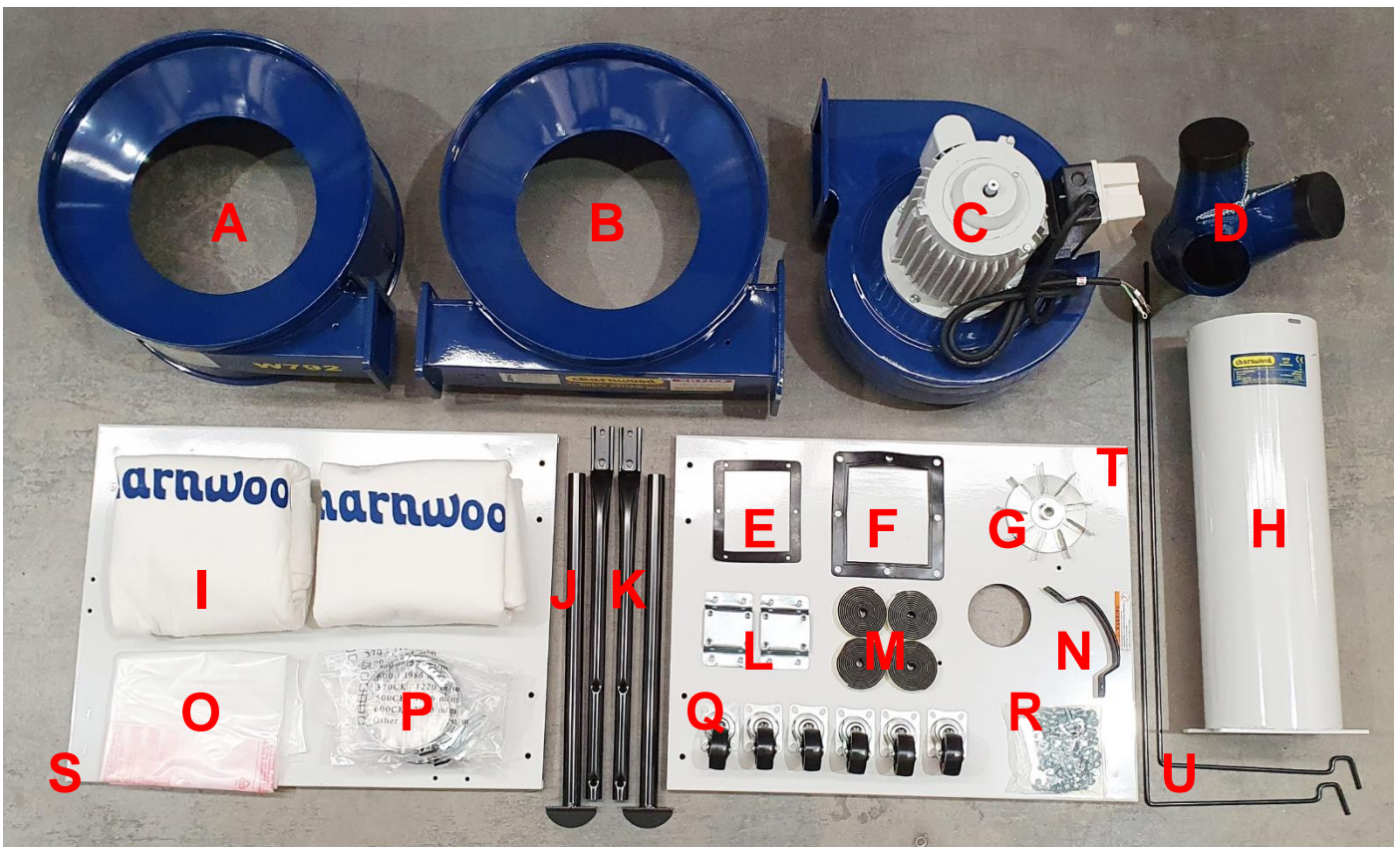
Rating Description

Industrial: Suitable for heavy use in a production environment.

Continuously rated, high power and strong heavy duty construction. Typically used by multiple operators in a component manufacturing, production environment. Frequent long periods of heavy use expected. Some maintenance and a basic level of self servicing is expected from the operators. Expected maximum use of 1500+ hours annually.

Unpacking

This machine is supplied in 2 cartons.
Open the cartons and carefully unpack all of the contents.



- | | | | | | |
|----------|----------------------|----------|----------------------|----------|----------------|
| A | Right Collector Body | H | Column | O | Collection Bag |
| B | Left Collector Body | I | Filter Bag | P | Bag Straps |
| C | Motor Assembly | J | Lower Support Leg | Q | Castors |
| D | 3 Way Inlet | K | Upper Support Leg | R | Fixings Pack |
| E | Rubber Gasket | L | Base Joining Bracket | S | Right Base |
| F | Rubber Gasket | M | Foam Sealing Strip | T | Left Base |
| G | Motor Cooling Fan | N | Handle | U | Bag Support |

Assembly

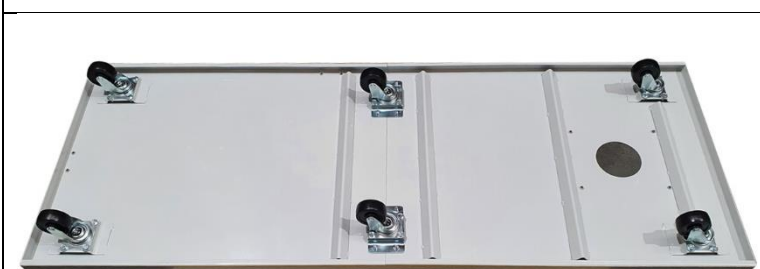


Join The Base

Use 4 x Hex head screws 5/16" x 1/2", to attach 2 Joining Brackets to one end of the base.

Push the 2 base panels together and Use 4 more screws to attach the bracket.

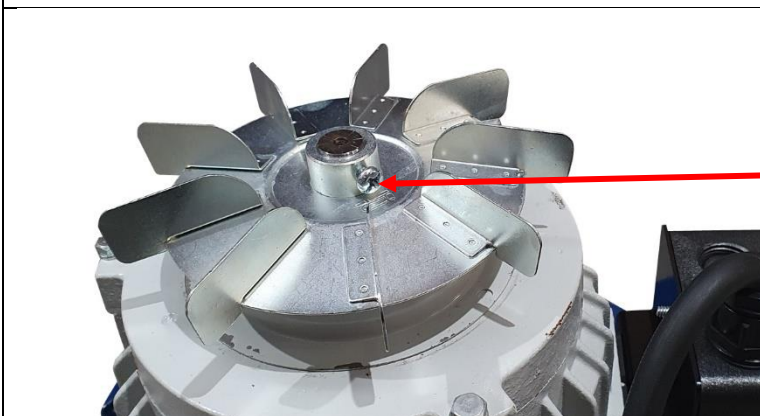
Tighten with a 12mm spanner, or socket set



Attach The Castors

Turn the assembled base upside down.

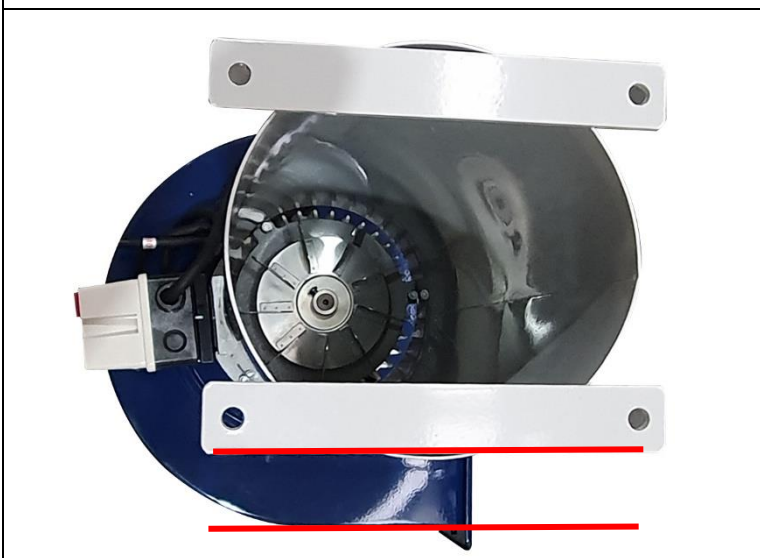
Use 24 x Hex head screws 5/16" x 1/2", to fix the 6 castors to the underside of the base.



Fit The Motor Cooling Fan

Slide the fan onto the motor spindle

Secure it using a cross head screwdriver



Fit The Column To The Motor

Fit the Column over the end of the motor.

Align the column feet so that they are parallel to the straight side of the impellor housing.



Secure with 3 Hex head screws, 1/4" x 1/2"

Tighten with a 10mm spanner or socket



Fit The Column & Motor Assembly To The Base

Flip the motor assembly right way up and place it onto the base aligning with the four mounting points.

Secure using 4 of the longer Hex head screws (5/16" x 3/4")

Tighten with a 12mm spanner or socket



Assemble The 2 Support Legs

Slide the Upper Support Leg into the Lower Support Leg, until the holes line up

Secure each leg using 2 Hex head screws, 5/16" x 1/2"

Tighten with a 12mm spanner or socket



Fit the 2 Support Legs

The Support Leg sits on the Base with the curved edge over the outside of the Base.

Secure using 2 Hex head screws, 5/16" x 1/2" on each Leg



Fit the Left Collector Body

Place the Rubber Gasket between the 2 parts.



Tip: Use a G clamp to hold the 2 parts in place whilst fitting the screws



Use 8 Hex Head screws, 5/16" x 1/2" to secure the Collector Body to the impellor housing



Attach the Support Leg to the Left Collector Body

Secure using 2 Hex head screws, 5/16" x 1/2"



Fit the Right Collector Body

Place the Rubber Gasket between the 2 parts.



Use 6 Hex head screws 1/4" x 1/2" to secure the Right Collector Body to the impellor housing

Tighten with a 10mm spanner or socket

Then secure The Right Collector Body to the Leg Support using 2 Hex head screws, 5/16" x 1/2"



Fit the 2 Filter Bag Supports

Thread a Nut 20mm onto the end of the Filter Bag Support

Add a Washer

Screw the Filter Bag Support into the threaded hole in the Collector Body



Rotate at least 5 times and stop with the hook directly over the centre of the Collector Drum

Use a 12mm spanner to lock the Nut down onto the Collector Body, to prevent it rotating.



Fit the Handle

Use 2 Hex head screws 1/4" x 1/2"



Fit 4 Foam Sealing Strips

Take a roll of Self Adhesive Foam, peel off the backing paper and stick it to the outside upper rim of the Collector Body. Use a pair of scissors to trim off any excess.

Repeat for the lower rim then repeat for the other collector body

The foam helps to create an airtight seal for the bags.



Fit the plastic Collection Bag

Open the bag and fit it over the outside of the Collector Body rim.

Use the 3 spring clips, located around the drum, top hold the bag in place whilst fitting the Bag Strap.



Fit the Bag Strap over the plastic bag, so it sits on the foam strip.

Engage the spring latch into one set of hooks and fasten it with the lever.

Ensure the plastic bag is sitting higher than the Bag Strap all around the rim.



Fit the Filter Bag

Locate the rectangle opening in the open end of the Filter Bag.

Feed the Bag Strap into the pocket all the way around the full circumference of the bag, until it can be seen in the opening again.



Engage the spring latch into one set of hooks and fasten it with the lever.

Feed the loop sewn into the top of the Filter Bag over the end of the Bag Support.



Fit the 3 Way Inlet

The standard inlet on the extractor is 150mm diameter. It can be converted to 3 x 100mm diameter inlets by fitting the 3 Way Inlet

Use a cross head screwdriver to remove the retaining screw from the inlet.

Fit the 3 Way Inlet over the 150mm inlet and then re-fit the screw.

Blanking caps are provided if only 1 or 2 x 100mm diameter hoses are to be used.

The Extractor is now ready to be connected to the electric supply.



16 amp 240v plug

16 amp 415v plug

Installation

The extractor is supplied with wires only.

Single phase 240v machines will have 3 wires.

3 phase 415v machines will have 4 wires.

It can be hardwired into a spur or fitted with an industrial plug.

Using the Extractor

Always start the extractor running before starting the dust producing machinery. Also allow the extractor to run for 10 seconds after the other machine is switched off to allow dust in the hose system to clear.

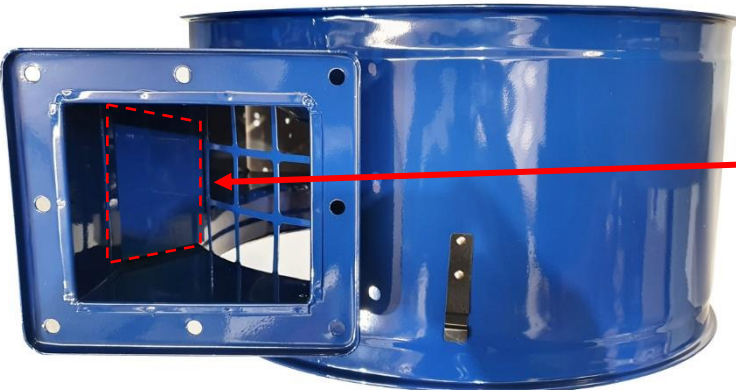
Empty the collection bag before it is overfull and dispose of the waste in accordance with the current requirements of your local authority.

Please Note: Maximum recommended total hose length in use at any time is 7 metres. Longer hose lengths may be used, but will reduce the performance.

When using the extractor with machines or power tools which have a smaller diameter connection, it is recommended to run the 100mm diameter hose from the extractor up to the machines dust outlet and fit the appropriate sized reducer at that point. This will maintain the airflow rate of the unit.

For some applications it may be more convenient to use a smaller diameter hose. This will inevitably reduce the performance of the machine and the length of small diameter hose should be kept to a minimum.

Adjustments

	<p>If one of the collection bags fills up faster than the other, this can be adjusted using the 'Splitter' which is located inside the Left Collector Drum.</p> <p>Remove the filter bag from the drum and locate the splitter.</p> <p>The splitter is a metal plate, fixed at one end. To adjust the air flow between the 2 collection bags bend it from the floating end. Bending it out, into the airflow more, will deposit more material in the first collection bag.</p>
---	--

Optional Items



1 Micron Cartridge Filter Upgrade

The standard cloth filter, filters down to 2 microns. This optional cartridge replaces the cloth bag and filters down to 1 micron without any loss in performance.

NB The W792 has 2 filters and both would need to be upgraded to achieve the 1 micron filter level.



Hoses

A range of transparent flexible extraction hose in different diameters from 38mm up to 150mm

Troubleshooting

<p>Reduced Performance</p>	<p>Check the collection bag is not full. Empty or replace the bag as required.</p> <p>Check the filter bag is not clogged. Turn the bag inside out and scrape the inside clean. The filter bag can also be washed, ensure it is completely dry before refitting.</p> <p>Examine the hose system looking for blockages. Remove the hose and clear out the blockage.</p> <p>Examine the hose and fittings for splits or air leaks. Secure the leaks and replace any worn hose.</p>
<p>Rattling noise and vibration</p>	<p>Large pieces may be blocked by the inlet grill. Remove the hose and Y-shaped connector from fan housing and check for pieces of wood or foreign bodies that are unable to pass through the grill. Remove them and reattach hose.</p>
<p>Extractor will not start</p>	<p>Check circuit breaker. Reset as required.</p> <p>Loose wire. Remove the On/Off switch, check the wires are pushed firmly onto the terminals.</p> <p>Failed switch. Replace the on/off switch.</p>
<p>Extractor does not run but buzzing noise heard from motor</p>	<p>Capacitor failure. (For confirmation, spin the motor shaft by hand. Press the start button whilst the shaft is still rotating. If the motors now runs normally, the start capacitor has failed.) Replace the start capacitor.</p>
<p>Extractor cuts out whilst running</p>	<p>Overheating. Leave the motor to cool and try again.</p>
<p>One collection bag fills faster than the other</p>	<p>Adjust the Splitter inside the Left Collector Drum</p>

Declaration of Conformity for CE Marking

Charnwood Declare that Woodworking Dust Extractor, Models: W792, W792CF, W792/3 & W792/3CF

Conforms with the following Directives: Machinery Directive 2006/42/EC
Low Voltage Directive 2006/95/EC

Conforms with the following UK Regulations: Supply of Machinery (Safety) Regulations 2008
Electrical Equipment (Safety) Regulations 2016

And further conforms to the machinery example for which the EC type examination Certificate No. NM 11050062 and NL11050076 have been issued by TUV Nord Group, 30519 Hannover Germany.

I hereby declare that equipment named above has been tested and found to comply with the relevant sections of the above referenced specifications. The machinery complies with all essential requirements of the directive.

Signed: 

Dated: 03/10/2022

Location: Leicestershire

Richard Cook, Director



Please dispose of packaging for the product in a responsible manner. It is suitable for recycling. Help to protect the environment, take the packaging to the local amenity tip and place into the appropriate recycling bin.



Only for EU countries

Do not dispose of electric tools together with household waste material!

In observance of European Directive 2002/96/EC on waste electrical and electronic equipment (EEE) and its implementation in accordance with national law, electric tools that have reached the end of their life must be collected separately and returned to an

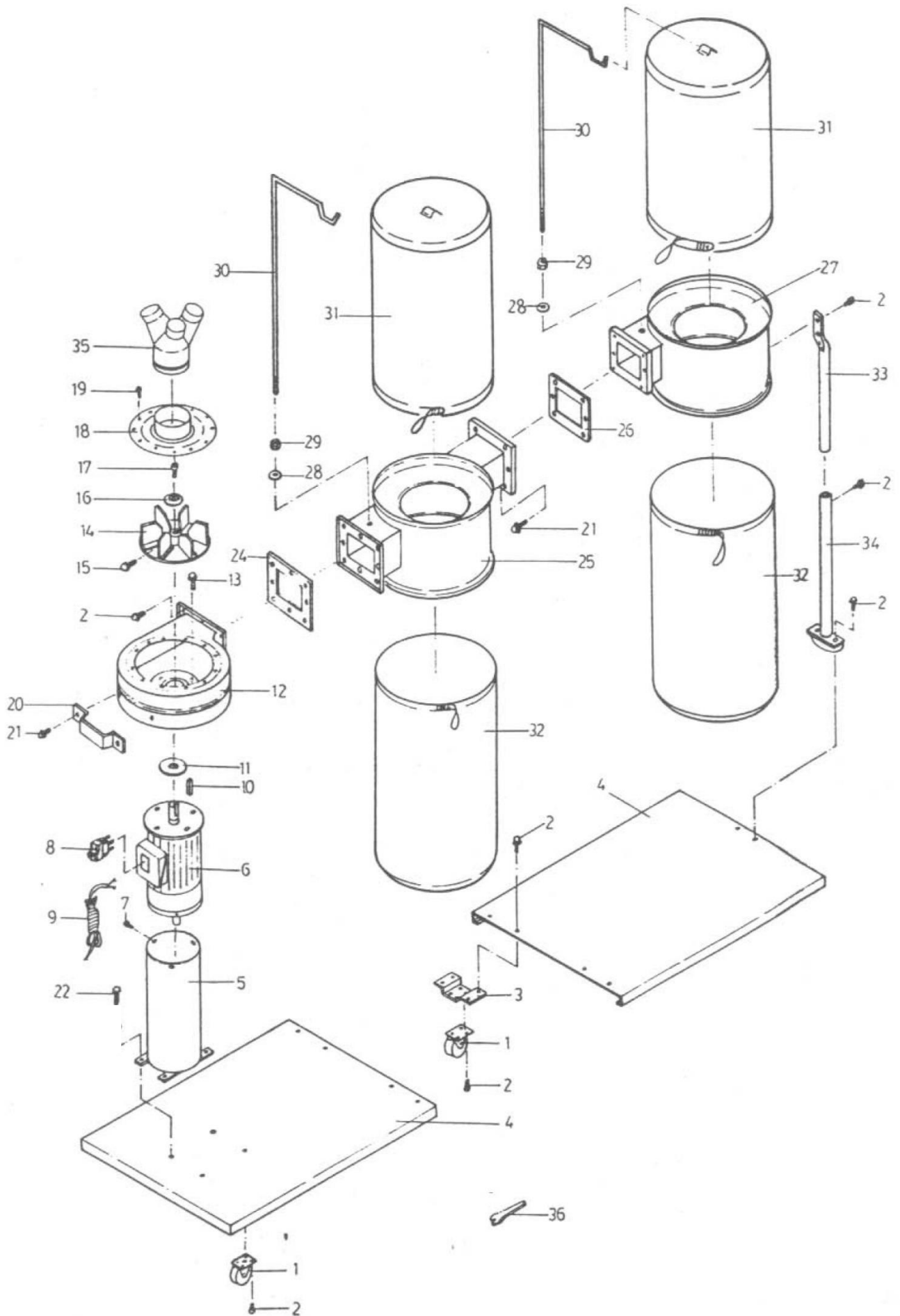
environmentally compatible recycling facility.

Your local refuse amenity will have a separate collection area for EEE goods

Charnwood W792 Parts List

Part No.	Description	Quantity
01	Castor	6
02	Hex Head Screw 5/16" x 1/2"	48
03	Base Joining Bracket	2
04	Base Plate (Left & Right)	2
05	Column	1
06	Motor (Available in 240v or 415v)	1
07	Hex Head Screw 1/4" x 1/2"	3
08	On/Off Switch (Available in 240v or 415v)	1
09	Power Cord	1
10	Key 7mm x 7mm x 29mm	1
11	Rubber Gasket	1
12	Impellor Housing	1
13	Hex Head Screw 5/16" x 1"	4
14	Impellor	1
15	Hex Head Screw 3/8" x 1/2"	1
16	Washer	1
17	Hex Head Screw M6 x 1.0 x 18mm (Left Hand Thread)	1
18	Inlet Cover	1
19	Pan Head Screw 10-24UNC x 3/8"	12
20	Handle	1
21	Hex Head Screw 1/4" x 1/2"	8
22	Hex Head Screw 5/16" x 3/4"	4
24	Rubber Gasket	1
25	Left Collector body	1
26	Rubber Gasket	1
27	Right Collector Body	1
27A	Foam Sealing Strip	4
28	Washer 5/16"	2
29	Nut 5/16" – 18UNC	2
30	Upper Bag Support	2
31	Filter Bag (2 micron)	2
32	Plastic Collection Bag	2
33	Lower Support Leg	2
34	Upper Support Leg	2
35	3 Way Inlet (3 x 100mm)	1
36	Spanner 12mm	1
STRAP	Quick Action Bag Clamp	4
CAP	Motor Capacitor (240v motor only) 400MFD 125VAC	1

CHARNWOOD W792 EXPLODED VIEW DIAGRAM





Woodworking machinery at its best!

Update October 2022

Charnwood, Cedar Court, Walker Road,
Hilltop Industrial Estate, Bardon Hill, Leicestershire, LE67 1TU

Tel. 01530 516 926
email: sales@charnwood.net website: www.charnwood.net