



**ZIPPER MASCHINEN GmbH**  
Gewerbepark 8 · 4707 Schüsslberg  
AUSTRIA  
Tel. +43 7248-61116-700  
info@zipper-maschinen.at  
[www.zipper-maschinen.at](http://www.zipper-maschinen.at)

*Originalfassung*

**DE BETRIEBSANLEITUNG**

*Übersetzung / Translation*

**EN USER MANUAL**

**FR MODE D'EMPLOI**

**CZ NÁVOD K POUŽITÍ**

**SK NÁVOD NA POUŽITIE**

**WIPPSÄGE**

**LOG SAW**

**SCIE À BÛCHE**

**KOLÉBKOVÁ PÍLA**

**KOLÍSKOVÁ PÍLA**



**ZI-WP500TN**  
EAN : 9120039234410



**YOUR  
JOB.  
OUR  
TOOLS.**



## II PREFACE (EN)

### Dear Customer!

This operating manual contains information and important notes for safe commissioning and handling of the Log Saw ZI-WP500TN, hereinafter referred to as "machine".



The manual is an integral part of the machine and must not be removed. Keep it for later use in a suitable place, easily accessible to users (operators), protected from dust and moisture, and enclose it with the machine if it is passed on to third parties!

### **Please pay special attention to the chapter Safety!**

Due to the constant further development of our products, illustrations and contents may differ slightly. If you notice any errors, please inform us.

Technical changes reserved!

**Check the goods immediately after receipt and make a note of any complaints on the consignment note when the delivery person takes them over!**

**Transport damage must be reported separately to us within 24 hours.**

**Zipper cannot accept any liability for transport damage not noted.**

## Copyright

© 2021

This documentation is protected by copyright. All rights reserved! In particular the reprint, the translation and the removal of photos and illustrations will be prosecuted.

Court of jurisdiction is the regional court Linz or the competent court for 4707 Schlüsslberg, Austria!

## Customer service contact

**ZIPPER MASCHINEN GmbH**

Gewerbepark 8, A-4707 Schlüsslberg  
AUSTRIA

Tel.: +43 7248 61116-700

Mail: [info@zipper-maschinen.at](mailto:info@zipper-maschinen.at)



## 12 SAFETY

This section contains information and important notes on safe start-up and handling of the machine.



For your own safety, read these operating instructions carefully before putting the machine into operation. This will enable you to handle the machine safely and prevent misunderstandings as well as personal injury and damage to property. In addition, observe the symbols and pictograms used on the machine as well as the safety and hazard information!

### 12.1 Intended use of the machine

The machinery is intended exclusively for the following operations:

*For cutting round wood, logs and other woody materials.*

#### Information on the condition of the workpieces:

- There must be no foreign objects, such as nails, in the workpiece!
- Only one workpiece may be machined at a time, regardless of its dimensions!
- It is not allowed to process several and also no bundles of cut material.
- To prevent wedging and recoil of the cut material, bent cut material must always be placed in the log carriage so that the outer edge faces the machine.

**ZIPPER-MASCHINEN** assumes no responsibility or warranty for any other use or use beyond this and for any resulting damage to property or injury.

#### 12.1.1 Technical Restrictions

The machine is intended for use under the following ambient conditions:

Relative humidity:	max. 65 %
Temperature (for operation)	+5° C bis +40° C
Temperature (for storage and/or transport)	-20° C bis +55° C

#### 12.1.2 Prohibited Use / Forseeable Misuse

- Operating the machine without adequate physical and mental aptitude
- Operating the machine without knowledge of the operating instructions
- Changes in the design of the machine
- Remove the safety markings attached to the machine
- Modify, circumvent or disable the safety devices of the machine
- Operating the machine in a potentially explosive environment (Machine can generate ignition sparks during operation)
- Operating the machine outside the technical limits specified in this manual
- Machining of materials with dimensions outside the limits specified in these instructions.
- Use of tools that do not comply with the safety requirements of the standard for machine tools for woodworking (EN847-1).
- Use of saw blades made of HSS steel.
- Use of saw blades with a lower max. speed than the machine.

The improper use or disregard of the versions and instructions described in this manual will result in the voiding of all warranty and compensation claims against Zipper Maschinen GmbH.

### 12.2 User Requirements

The machine is designed for operation by one person. The physical and mental aptitude as well as knowledge and understanding of the operating instructions are prerequisites for operating the machine. Persons who, because of their physical, sensory or mental abilities or their inexperience or ignorance, are unable to operate the machinery safely must not use it without supervision or instruction from a responsible person.



**Please note that local laws and regulations may determine the minimum age of the operator and restrict the use of this machine!**

Put on your personal protective equipment before working on the machine.

**Work on electrical components or equipment may only be carried out by a qualified electrician or under the instruction and supervision of a qualified electrician.**

### 12.3 General safety instructions

To avoid malfunctions, damage and health hazards when working with the machine, the following points must be observed in addition to the general rules for safe working:

- Before start-up, check the machine for completeness and function. Only use the machine if the guards and other non-parting guards required for machining have been fitted, are in good operating condition and have been properly maintained.
- Choose a level, vibration-free, non-slip surface for the installation location.
- Ensure sufficient space around the machine!
- Ensure sufficient lighting conditions at the workplace to avoid stroboscopic effects.
- Ensure a clean working environment.
- Only use perfect tools that are free of cracks and other defects (e.g. deformations).
- Remove tool keys and other adjustment tools before switching on the machine.
- Keep the area around the machine free of obstacles (e.g. dust, chips, cut parts, etc.).
- Check the strength of the machine connections before each use.
- Never leave the running machine unattended. Switch off the machine before leaving the working area and secure it against unintentional or unauthorised recommissioning.
- The machine may only be operated, serviced or repaired by persons who are familiar with it and who have been informed of the hazards arising from this work.
- Ensure that unauthorised persons maintain a safe distance from the machine and keep children away from the machine.
- Wear close-fitting protective clothing and suitable protective equipment (eye protection, dust mask, ear protection; gloves only when handling tools).
- When working on the machine, never wear loose jewellery, loose clothing, ties or long, open hair.
- Hide long hair under hair protection.
- Always work with care and the necessary caution and never use excessive force.
- Do not overload the machine!
- Do not work on the machine if it is tired, not concentrated or under the influence of medication, alcohol or drugs!
- Do not use the machine in areas where vapours from paints, solvents or flammable liquids represent a potential danger (danger of fire or explosion!).
- Do not smoke in the immediate vicinity of the machine (fire hazard)!
- Shut down the machine and disconnect it from the power supply before carrying out any adjustment, conversion, cleaning, maintenance or repair work. Before starting any work on the machine, wait until all tools or machine parts have come to a complete standstill and secure the machine against unintentional restarting.

### 12.4 Electrical safety

- Improper use of extension cords may cause inefficient operation of the machine, resulting in overheating. Make sure that the extension cord is not longer than 10 m and its cross-section is not less than 2.5 mm<sup>2</sup> to allow sufficient current flow to the motor.
- Avoid using free and insufficiently insulated connections. Connections must be made with appropriate material suitable for outdoor use.
- A damaged or tangled cable increases the risk of electric shock. Handle the cable with care. Never use the cable to carry, pull or disconnect the power tool. Keep the cable away from heat, oil, sharp edges or moving parts.
- Proper plugs and sockets reduce the risk of electric shock.
- Water entry into machine increases the risk of electric shock. Do not expose machine to rain or moisture.
- The machine may only be used in humid environments if the power source is protected by a residual current circuit breaker.
- Do not use the power tool if it cannot be turned on and off with the ON-OFF-switch.



## 12.5 Special safety instructions for this machine

- When using milling tools with a diameter of  $\geq 16$  mm and circular saw blades, these must comply with EN 847-1:2013 and EN 847-2:2013; tool carriers must comply with EN 847-3:2013.
- Excessive noise can cause hearing damage and temporary or permanent hearing loss. Wear hearing protection certified to health and safety regulations to limit noise exposure.
- Replace cracked and deformed saw blades immediately, they cannot be repaired.
- Use saw blades that are clean and sharpened, they are less prone to failure and are easier to guide.
- Never attempt to cut logs that contain nails, wire or debris. Branches must be cut flush with the trunk.
- Always maintain a secure standing position and balance. Never stand on the machine. Serious injury can occur if the machine tips over or if the cutting tool is accidentally touched. Do not keep objects above or near the machine that someone could stand on to reach the machine.
- Do not attempt to load or unload logs until the machine has stopped.
- Do not remove residual pieces or other parts of the workpiece from the cutting area while the machine is running, unless you use a push stick.
- Keep your hands away from all moving parts.
- Do not grasp around the saw blade with both hands while the machine is running.
- Avoid awkward cutting operations and hand positions where a sudden slippage could cause your hand to get caught at the saw blade.
- Never deposit logs to be split in such a way that you have to reach over the machine.
- Operate the control handle with your hands only. Never use your foot, knee or any other extension tool.
- Never attempt to free a jammed saw blade without first turning off the machine.

## 12.6 Hazard warnings

Despite their intended use, certain residual risks remain. Due to the structure and construction of the machine, hazardous situations may occur when handling the machines:

### DANGER



A safety instruction designed in this way indicates an imminently hazardous situation which, if not avoided, will result in death or serious injury.

### WARNING



Such a safety instruction indicates a potentially hazardous situation which, if not avoided, may result in serious injury or even death.

### CAUTION



A safety instruction designed in this way indicates a potentially hazardous situation which, if not avoided, may result in minor or moderate injury.

### NOTICE



A safety note designed in this way indicates a potentially dangerous situation which, if not avoided, may result in property damage.

Irrespective of all safety regulations, their sound common sense and corresponding technical suitability/training are and remain the most important safety factor in the error-free operation of the machine. **Safe working depends first and foremost on you!**



### 13 TRANSPORT

For proper transport, follow the instructions and information on the transport packaging regarding centre of gravity, attachment points, weight, means of transport to be used and prescribed transport position, etc.

Transport the machine in its packaging to the place of installation.



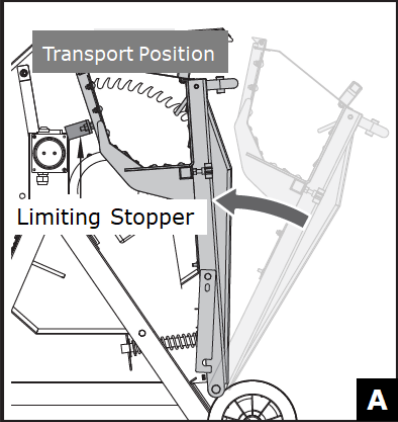
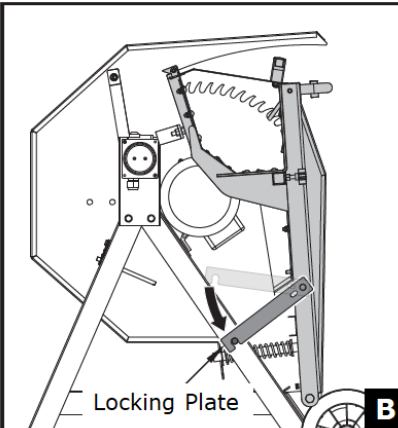
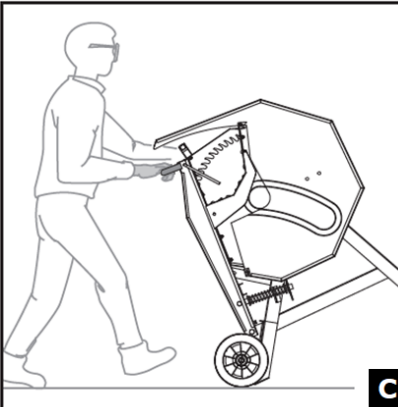
To manoeuvre the machine in the packaging, a pallet truck or a forklift with appropriate lifting power can be used.

If you transport the machine with a vehicle, make sure that the load is properly secured.

#### Transport of the assembled machine

The machine is equipped with two wheels, which allow easy transportation.

**NOTICE:** Never transport the machine when it is loaded!

 <p>Transport Position</p> <p>Limiting Stopper</p> <p><b>A</b></p>	<ol style="list-style-type: none"><li>1. Flip the log carriage towards the motor until it touches the limiting stopper (see Fig. A).</li></ol>
 <p>Locking Plate</p> <p><b>B</b></p>	<ol style="list-style-type: none"><li>2. Secure the log carriage with the locking plate by flipping it downwards (see Fig. B).</li></ol>
 <p><b>C</b></p>	<ol style="list-style-type: none"><li>3. Stand behind the machine and tilt the wheel axle to transport it easily (see Fig. C).</li></ol>



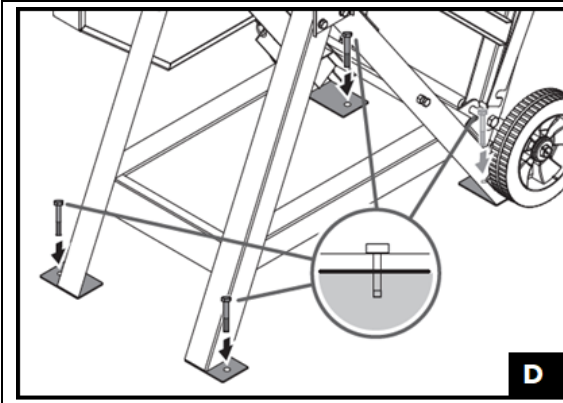
## 14 ASSEMBLY

### 14.1 Checking scope of delivery

Check the machine immediately after delivery for transport damage and missing parts.

### 14.2 The workplace

Choose a suitable place for the machine. Pay attention to the safety requirements and the dimensions of the machine. The selected location must ensure a suitable connection to the electrical supply. Make sure that the machine is placed on a solid and level surface and that the ground can support the load of the machine. The machine must be levelled at all support points. It is also necessary to guarantee a distance of at least 0.8 m around the machine. The necessary distance for the feeding of long workpieces must be provided.

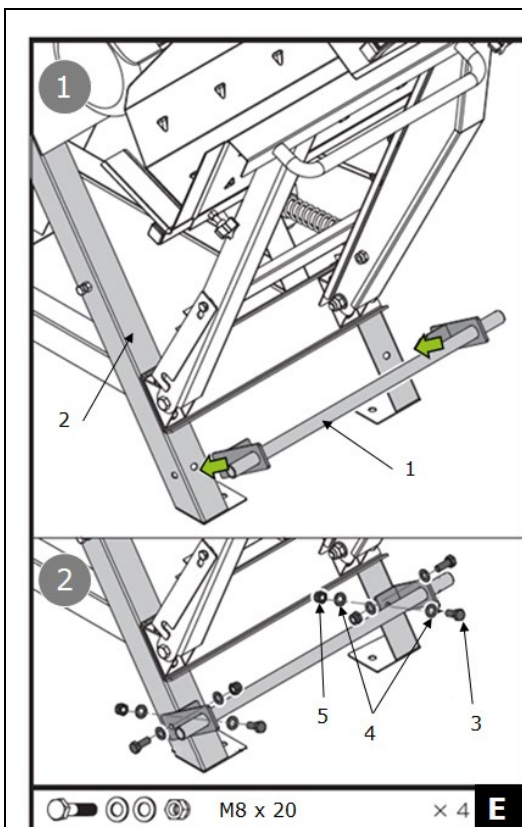


#### Anchoring on level ground

Use four bolts to secure your machine to the ground. Due to the different ground conditions, these are not included in the delivery content. Select the correct bolt type for your soil conditions (see Fig. D).

### 14.3 Assembly

The machine was disassembled for transport and must be assembled as shown below. Before commissioning, check all screw connections for tightness and tighten them if necessary.

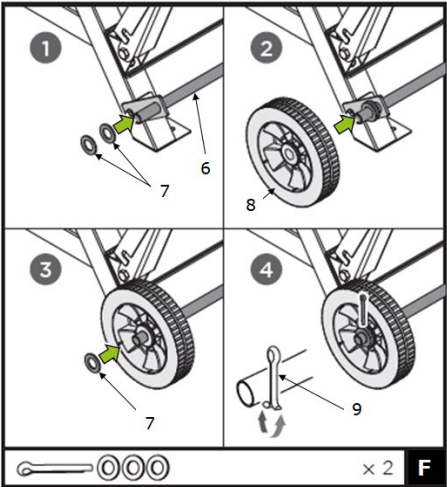
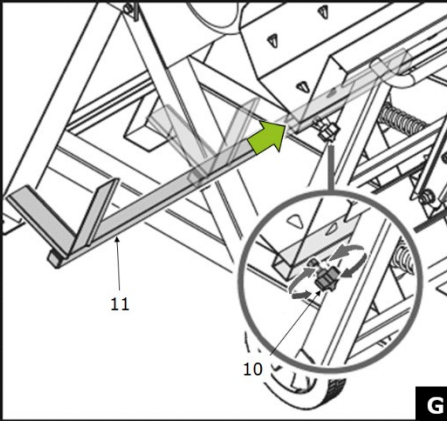


#### 1. Assembly wheel axle

Place the wheel axle (1) on the rear side of the base frame (2) and align the bore holes (see Fig. E, Pic. 1).

Secure the wheel axle (1) to the base frame (2) using a total of four M8×20 bolts (3), eight washers (4) and four nuts (5) (see Fig. E, Pic. 2).



	<p><b>2. Assembly wheels</b></p> <p>Slide two washers (7), a wheel (8) and a third washer (7) onto the wheel axle (6) one after the other (see Fig. F, Pic. 1-3).</p> <p>To secure, insert a cotter pin (9) into the bore hole of the wheel axle (6) and bend its lower ends apart (see Fig. F, Pic. 4).</p> <p>Repeat the same steps for the second wheel.</p>
	<p><b>3. Assembly log carriage extension</b></p> <p>Loosen the star screw (10) on the rear side of the log carriage until the log carriage extension (11) can be inserted into the guidance (see Fig. G).</p> <p>Slide the log carriage extension (11) into the guidance and align it correctly.</p> <p>Then retighten the star screw (10) to secure it in place.</p>

## 14.4 Electrical connection

### WARNING



**Dangerous electrical voltage!** The machine may only be connected to the mains supply and the associated checks carried out by a qualified electrician or under the instruction and supervision of a qualified electrician!

1. Check that the neutral connection and protective earthing are functioning properly.
2. Check that the supply voltage and frequency correspond to the specifications of the machine.

### NOTICE



**Deviation of the supply voltage and frequency**

A deviation from the value of the supply voltage of  $\pm 10\%$  is permissible.

A short-circuit fuse must be provided in the power supply system of the machine!

3. Find the required cross-section of the supply cable (it is recommended to use a cable type H07RN (WDE0282), taking measures to protect against mechanical damage) in a current capacity data sheet.
4. Make sure that the power source is protected by a residual current circuit breaker.
5. Connect the unit only to a properly grounded outlet.
6. When using an extension cable, make sure that it is dimensioned appropriately for the connected load of the machine (the connected load can be found in the technical data). You can find the correlation between cable cross-section and cable length in specialist literature or consult an electrician.
7. Only use extension cords that are also suitable for outdoor use. Using an extension cord suitable for outdoor use reduces the risk of electric shock.



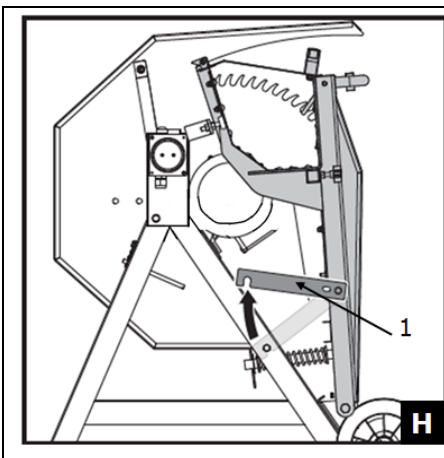


## 15 OPERATION

### 15.1 Work before start-up

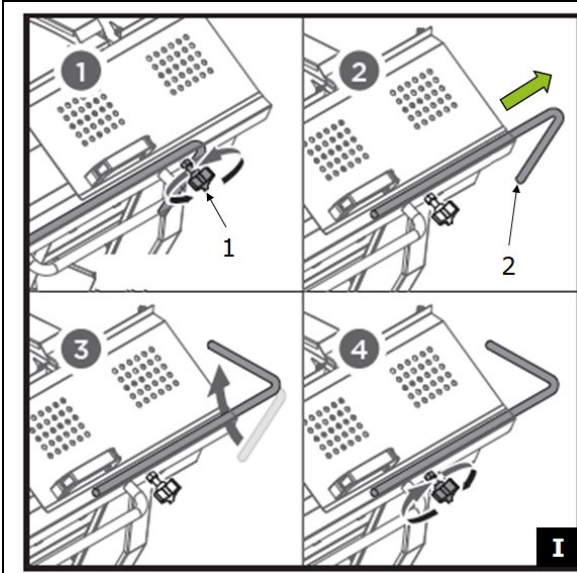
- Make sure that the saw blade is firmly secured, in perfect condition, sharpened and guaranteed to run smoothly.
- Make sure that the rocker unit with the log carriage is fully extended before each use. Otherwise there is an increased risk of recoil.
- When cutting material, pay attention to foreign objects such as wires, nails, etc. as well as irregularities in the material, such as knots.
- Check that the moving parts are working properly and are not jammed.
- Ensure that the machine is securely anchored to the ground.
- Ensure that the correct power supply and cable are used. Insert the plug into the socket.

#### 15.1.1 Unlocking the machine



**NOTICE:** the locking plate (1) must be released before start-up of the machine (see Fig. H)!

#### 15.1.2 Setting the log ruler



1. Loosen the star screw (1) so that the log ruler (2) can be pulled out (see Fig. I, Pic. 1).
2. Use the scale to set the desired length of the workpiece (see Fig. I, Pic. 2).
3. Turn the log ruler (2) clockwise to the top (see Fig. I, Pic. 3).
4. For fixation, retighten the star screw (1) (see Fig. I, Pic. 4).



## 15.2 Operating

### 15.2.1 Start/Stop



Starting the machine: press the green "I" button on the ON-OFF switch.  
Stopping the machine: press the red "O" button on the ON-OFF switch.

### 15.2.2 Workflow

1. Switch on the machine.
2. Open the top guard.
3. Position the cut material into the log carriage on the completely extended rocker unit.
4. Close the top guard again.
5. Grasp the handle on the left side of the carriage and slide it towards the saw blade cover.
6. Continue pressing with even force until the cut material has been cut.
7. After the cut, move the log carriage all the way back again.
8. If necessary, reposition the cut material and repeat steps 4 to 7 until the work is finished.
9. Switch off the machine after work.
10. Wait until the machine stops.
11. Disconnect the power plug and clean the unit if necessary.

#### Free blocked log

If the saw blade is blocked, proceed as follows:

1. Switch off the machine immediately!
2. Wait until the machine comes to a standstill
3. Pull out power plug.
4. Carefully remove the blocked log from the machine.

## 16 CLEANING, MAINTENANCE, STORAGE, DISPOSAL

### 16.1 Cleaning

#### NOTICE



The use of paint thinners, petrol, aggressive chemicals or scouring agents will damage the plastic surfaces! Therefore, only use mild cleaning agents for cleaning! Make sure that no water seeps into the machine!

Clean the machine after each use. Wipe it with a clean, damp cloth or blow off dust and material residues with compressed air at low pressure. Keep all safety devices, ventilation openings and the motor housing as free as possible from dirt and dust. Make sure that no water can enter the machine. The entry of water into a power tool increases the risk of electric shock.

### 16.2 Maintenance

#### WARNING



**Danger due to electrical voltage!** Handling the machine with the power supply up can lead to serious injuries or even death. Always disconnect the machine from the power supply before servicing or maintenance work and secure it against unintentional or unauthorised reconnection!

The machine is low-maintenance and only a few parts have to be serviced. Nevertheless, malfunctions or defects which could impair the safety of the user must be rectified immediately! Repair work may only be carried out by qualified personnel!

To prolong the lifespan of the machine, oil the rotating parts once a month. Do not oil the motor.



### 1621 Sharpening the saw blade

The saw blade can be sharpened several times without being removed from the machine. Use a fine-cut square-blade file of 8–12" for sharpening.

Pay attention to the following points when sharpening:

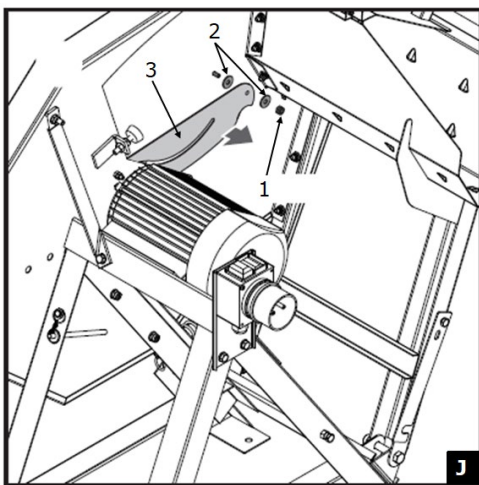
- During manual sharpening only file the front rake of the tooth over a distance of about 5–7 mm.
- Always keep the original shape of the tooth.
- Do not make sharp notches at the root of the tooth with the file.
- Always clean the blade-clamps carefully.

### 1622 Changing the saw blade

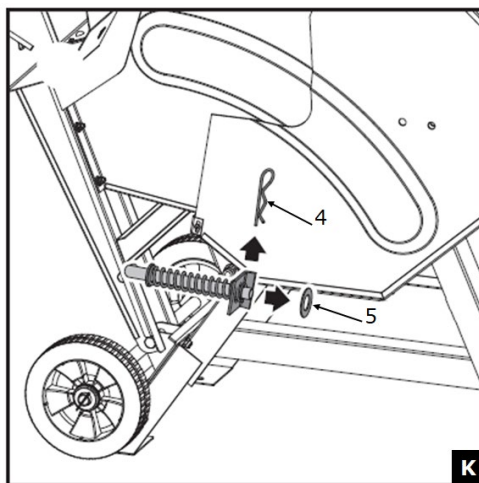
#### CAUTION



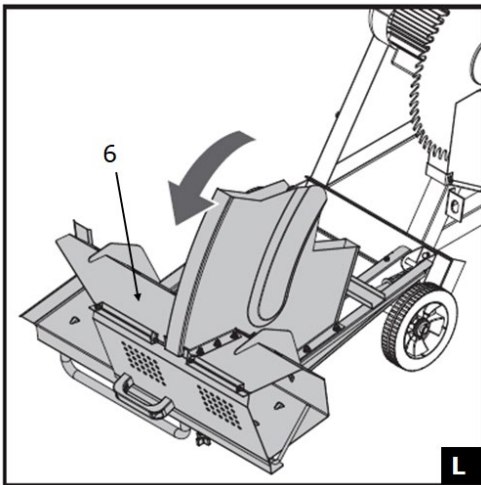
When handling circular saw blades when changing tools, please use safety gloves to avoid risk of injury.



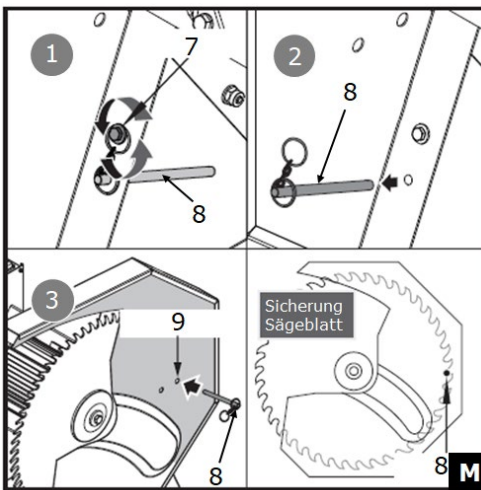
1. Remove the nut (1) and both washers (2) from the guard plate (3) (see Fig. J).



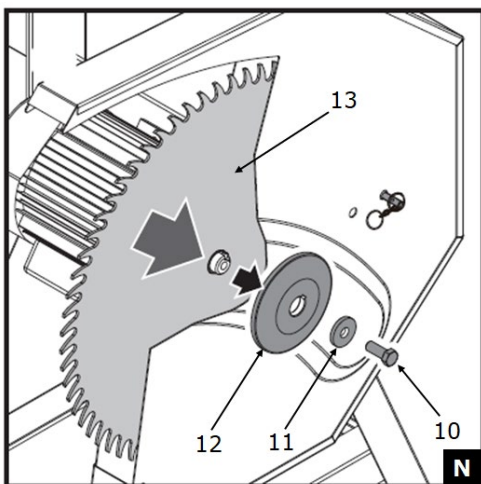
2. Pull out the cotter pin (4) from the return guiding pipe and remove the washer (5) (see Fig. K).



3. Slowly descend the log carriage (6) towards the ground (see Fig. L).



4. Loosen the fixing screw (7) to release the ring end of the chain of the locking pin (8) (see Fig. M, Pic. 1).
5. Pull the locking pin (8) out of the base frame (see Fig. M, Pic. 2).
6. Insert the locking pin (8) into the bore hole (9) on the outside of the saw blade cover to prevent the saw blade from rotating (see Fig. M, Pic. 3).



7. Loosen the M12x30 screw (10) with a saw blade wrench.  
Remove the M12x30 screw (10), the washer (11) and the flange (12). Detach the old saw blade (13) (see Fig. N).

8. The assembly of the new saw blade is done in reverse order.

### CAUTION



Make sure that the saw blade is inserted in the correct position. The arrow on the saw blade must point in the direction of the operating side!



### 16.3 Storage

- Disconnect the power plug
- Store unused machines in a dry, locked place out of the reach of children.

To extend the service lifespan of the machine and ensure smooth operation, carry out the following before **storing it for a longer period of time**:

- Clean the machine thoroughly.
- Treat all moving parts with an environmentally friendly oil.

**Never use grease! Do not oil the engine!**

### 16.4 Disposal



Observe the national waste disposal regulations. Never dispose of the machine, machine components or equipment in residual waste. If necessary, contact your local authorities for information on the disposal options available.

If you buy a new machine or an equivalent device from your specialist dealer, he is obliged in certain countries to dispose of your old machine properly.

## 17 TROUBLESHOOTING

### WARNIUNG



**Danger due to electrical voltage!** Handling the machine with the power supply up can lead to serious injuries or even death. Always disconnect the machine from the power supply before servicing or maintenance work and secure it against unintentional or unauthorised reconnection!

Problem	Possible cause	Fault elimination
<b>Saw blade gets loose after turning off the motor</b>	<ul style="list-style-type: none"> <li>• Fastening nut tightened insufficiently</li> </ul>	<ul style="list-style-type: none"> <li>• Tighten fastening nut (right-hand thread)</li> </ul>
<b>Motor does not start</b>	<ul style="list-style-type: none"> <li>• 1. Failure mains fuse</li> <li>• 2. Extension cable defective</li> <li>• 3. Connections of the motor or switch defect</li> <li>• 4. Motor or connections defect</li> </ul>	<ul style="list-style-type: none"> <li>• 1. Check mains fuse</li> <li>• 2. Exchange extensions cable</li> <li>• 3. Have it checked by an electrician</li> <li>• 4. Have it checked by an electrician</li> </ul>
<b>Wrong direction of motor rotation</b>	<ul style="list-style-type: none"> <li>• Capacitor defect</li> </ul>	<ul style="list-style-type: none"> <li>• Have it checked by an electrician.</li> </ul>
<b>Motor unable to run – the fuse is tripped</b>	<ul style="list-style-type: none"> <li>• Cross section of the extension cable insufficient</li> <li>• Overload by dull saw blade</li> </ul>	<ul style="list-style-type: none"> <li>• See the wiring diagram in the manual</li> <li>• Exchange saw blade</li> </ul>
<b>Burns on the cutting surface</b>	<ul style="list-style-type: none"> <li>• Dull saw blade</li> <li>• Wrong saw blade</li> </ul>	<ul style="list-style-type: none"> <li>• Insert sharpened saw blade</li> <li>• Exchange saw blade</li> </ul>